



€890,000

Ref: JL-98065

2-bedroom apartment with 114 sqm of gross private area, renovated, with balcony and box garage, in the Historic Center of Cascais. Apartment with natural light and balcony facing ea...

- A/C
- Alarm
- Dishwasher
- Fridge
- Washing Machine

Telephone: +351 213 471 603
Email: info@portugalhomes.com

Praça da Alegria 1, 3rd Floor, 1250-004 Lisboa, Portugal Licence AMI - 14414 | APEMIP 5940

Property Description

2-bedroom apartment with 114 sqm of gross private area, renovated, with balcony and box garage, in the Historic Center of Cascais.

Apartment with natural light and balcony facing east/south.

Living room with fireplace with access to a balcony, ideal for enjoying the morning sun.

The kitchen, facing west, is equipped and includes a laundry area.

It features two bedrooms with built-in wardrobes and two bathrooms.

Located in a prime area, it offers walking distance access to the beaches of Cascais Bay, terraces, bars, restaurants, Marina and Train Station.

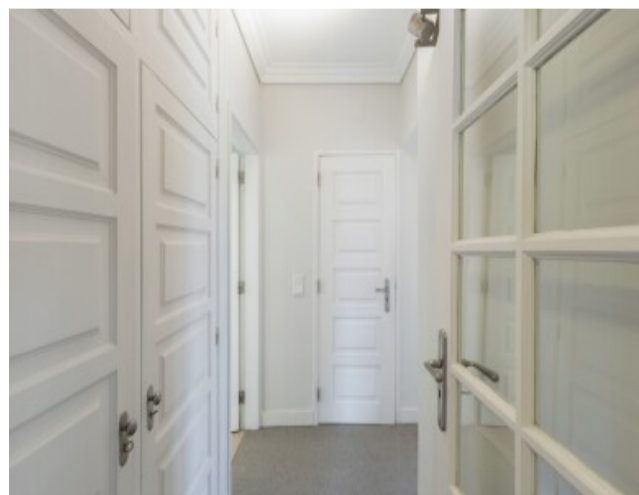
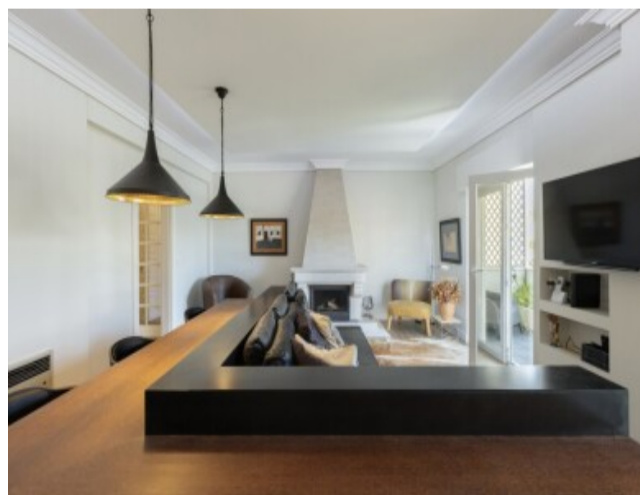
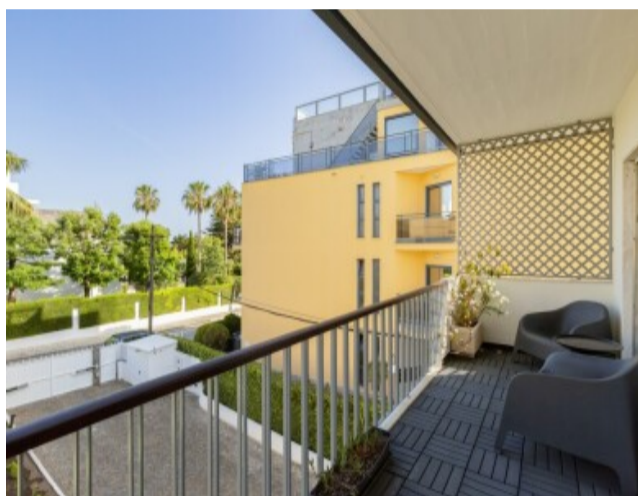
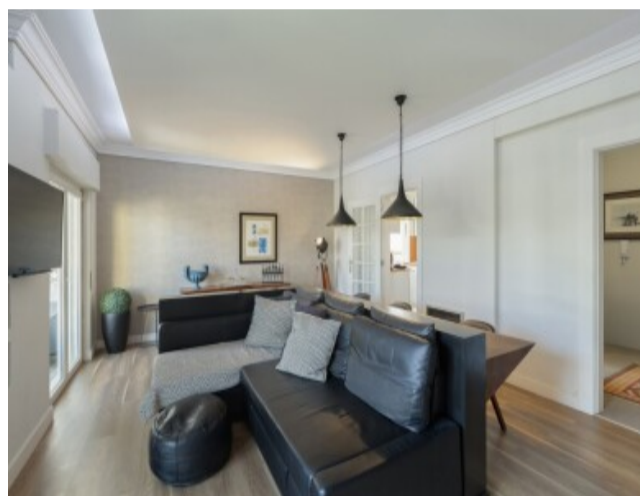
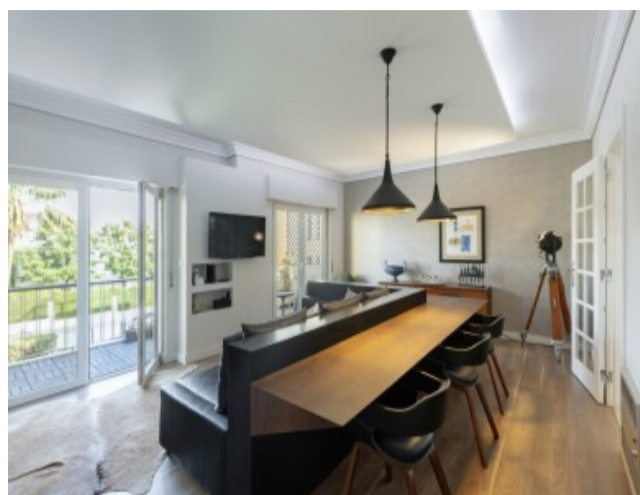
Easy access to surrounding schools and colleges, such as Escola Salesiana do Estoril, Deutsche Schule Lissabon (German School) and Santo António International School (SAIS). 5 minutes from Colégio Amor de Deus and Externato Nossa Senhora do Rosário.

Also, 15 minutes from the International Schools The American School in Portugal (TASIS) and Carlucci American International School of Lisbon (CAISL), both in Beloura.

Just 10 minutes from Estoril Golf Club, Estoril Tennis Club (CTE) and Quinta da Marinha Golf Course. 10 minutes from the main shopping centers Cascai

Shopping and El Corte Inglés in Beloura. 5 minutes from the highway access, 15 minutes from Sintra center and 30 minutes from Lisbon Airport.

Gallery



logo

Telephone: +351 213 471 603

Email: info@portugalhomes.com

Praça da Alegria 1, 3rd Floor, 1250-004 Lisboa, Portugal Licence AMI - 14414 | APEMIP 5940

Additional Details

Property Features

A/C	Alarm	Dishwasher
Fridge	Washing Machine	

Site Floorplan

