

## Fontinha Apartments

€356,000

Ref: DL27435

275 sqm

Fontinha Apartments offers an exclusive and high-end concept. Spread over 5 floors and with only 15 apartments of except...

Telephone: +351 213 471 603  
Email: info@portugalhomes.com

Praça da Alegria 1, 3rd Floor, 1250-004 Lisboa, Portugal Licence AMI - 14414 | APEMIP 5940

logo not

## Property Description

Fontinha Apartments offers an exclusive and high-end concept. Spread over 5 floors and with only 15 apartments of exceptional contemporary design, ranging from T0 to T2, this condominium provides equipment and services of excellence.

With a central and privileged location on Rua da Fontinha, in Porto, close to the famous Rua de Santa Catarina, this development stands out for its accessibility and convenience.

Living at Fontinha Apartments allows for easy access to a wide range of amenities and services.

Rua de Santa Catarina, one of the most well-known and busiest streets in Porto, is famous for its varied commerce, with numerous shops, cafes, restaurants and shopping centres.

In addition, the proximity to public transport, such as the metro and buses, facilitates mobility throughout the city.

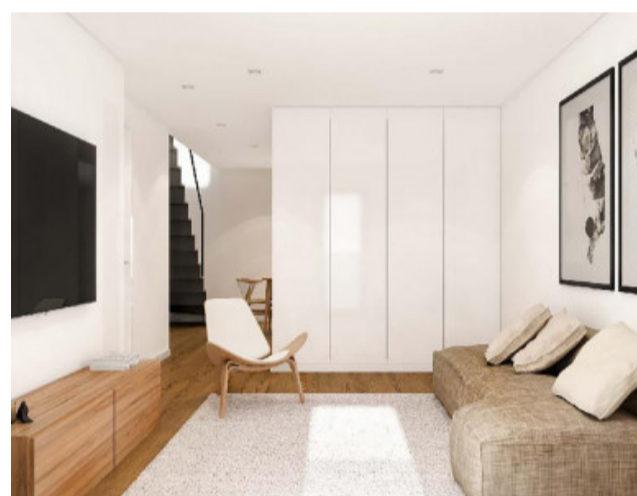
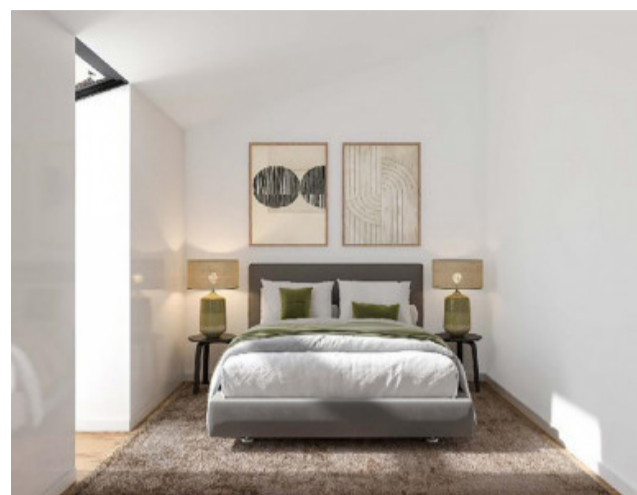
The central location also allows easy access to Porto's tourist, cultural and historical sights, such as the Clérigos Tower, the Lello Bookstore and the Ribeira.

For those looking for quality of life in the heart of the city, Fontinha Apartments is the ideal choice.

Each tile that makes up this city carries history and culture. The streets are full of hospitality, friendliness, cafes and restaurants of Porto. The aroma of traditional dishes, the fresh air of the Atlantic, and the mild temperatures.

The work is expected to be completed in March 2025.

# Gallery



logo

Telephone: +351 213 471 603

Email: [info@portugalhomes.com](mailto:info@portugalhomes.com)

Praça da Alegria 1, 3rd Floor, 1250-004 Lisboa, Portugal Licence AMI - 14414 | APEMIP 5940

## Additional Details

### New Development Features

## Development Units

Fraction	Bedrooms	Floor Size	Price
0	2	99 sqm	€356,000

logo

Telephone: +351 213 471 603

Email: [info@portugalhomes.com](mailto:info@portugalhomes.com)

Praça da Alegria 1, 3rd Floor, 1250-004 Lisboa, Portugal Licence AMI - 14414 | APEMIP 5940

## Site Floorplan

Telephone: +351 213 471 603

Email: [info@portugalhomes.com](mailto:info@portugalhomes.com)

Praça da Alegria 1, 3rd Floor, 1250-004 Lisboa, Portugal Licence AMI - 14414 | APEMIP 5940

logo