

**€1,350,000**

Ref: DL36114

267 sqm

4 bedroom flat, on the top floor, with 177 m2 and an outdoor area of 90 m2, inserted in a new development in Matosinhos...

Telephone: +351 213 471 603  
Email: [info@portugalhomes.com](mailto:info@portugalhomes.com)

Praça da Alegria 1, 3rd Floor, 1250-004 Lisboa, Portugal Licence AMI - 14414 | APEMIP 5940

## Property Description

4 bedroom flat, on the top floor, with 177 m<sup>2</sup> and an outdoor area of 90 m<sup>2</sup>, inserted in a new development in Matosinhos Sul, just 600m from the beach.

The flat has an excellent solar orientation of East and South with a fantastic distribution, designed to ensure comfort and tranquillity. It consists of four large bedrooms, two of them with en-suite and all with excellent natural light and built-in wardrobes, offering efficient storage solutions. The living room, with generous areas, benefits from great luminosity and allows different layout configurations, creating a cosy and versatile environment.

The kitchen open to the living area is fully equipped, ensuring functionality in everyday life.

The property is also distinguished by its high quality finishes and the high level of thermal and acoustic comfort, guaranteed by double glazing and thermal and acoustic insulation. It has a private closed garage for two cars and two more individual spaces, adding convenience and security, a highly valued factor in this location.

Inserted in the Prime residential area of Matosinhos Sul and with quick access to the Marginal and the beach of Matosinhos, it is located a few meters from Foz do Douro and Parque da Cidade, where you can enjoy green spaces, leisure areas, among other sports activities. In Matosinhos Sul you will find everything you need. There are numerous restaurants, pharmacies, cafes, supermarkets, gyms, museums, available in the area. Everything is accessible on foot and within walking distance of the main points of the city.

In Matosinhos Sul you will find prestigious public and private health and educational institutions, as well as several public transport options, with a metro station 5 minutes walk away, and access to the main road junctions of Greater Porto (Estrada da Circunvalação, A28 and A4).

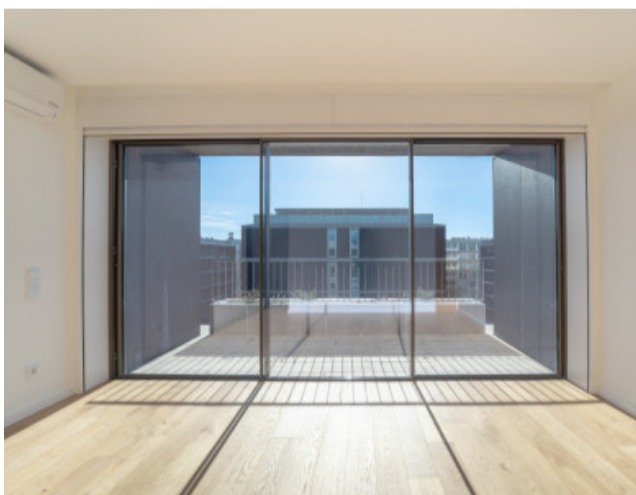
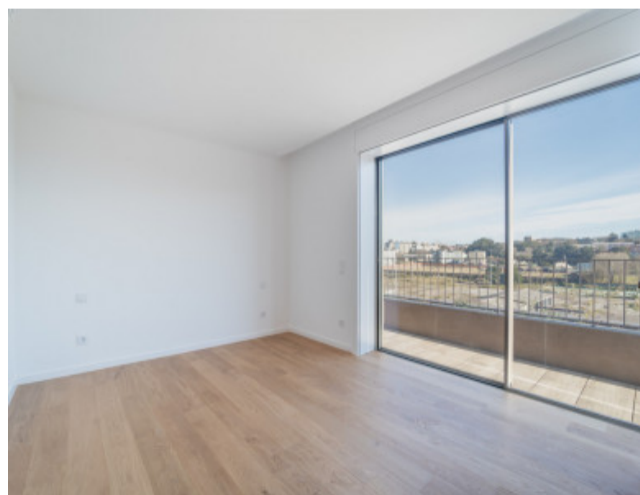
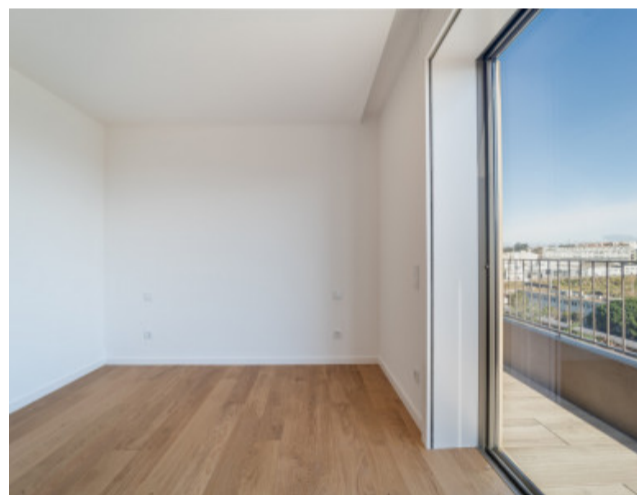
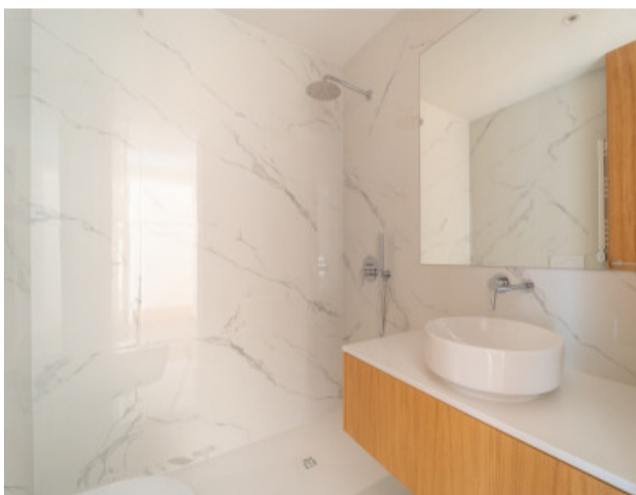
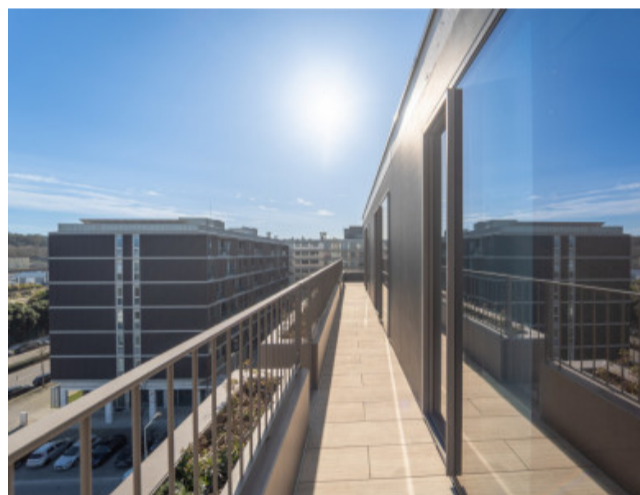
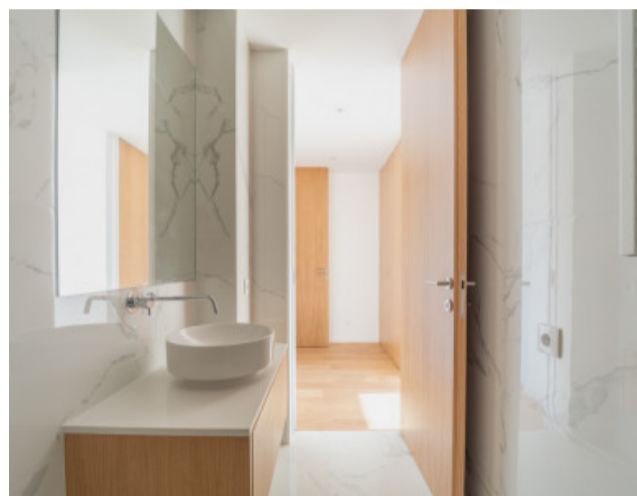
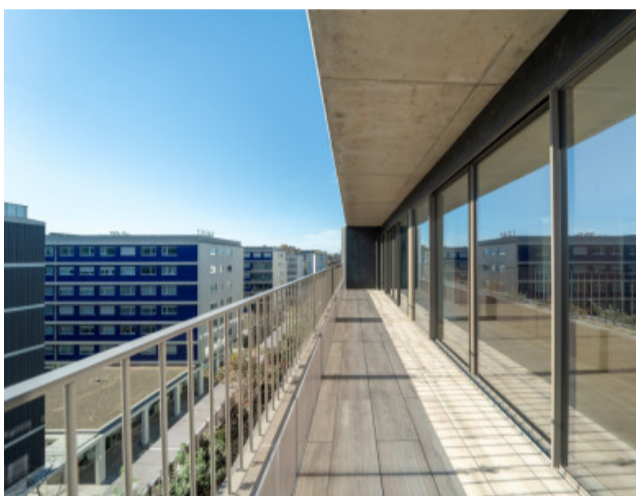
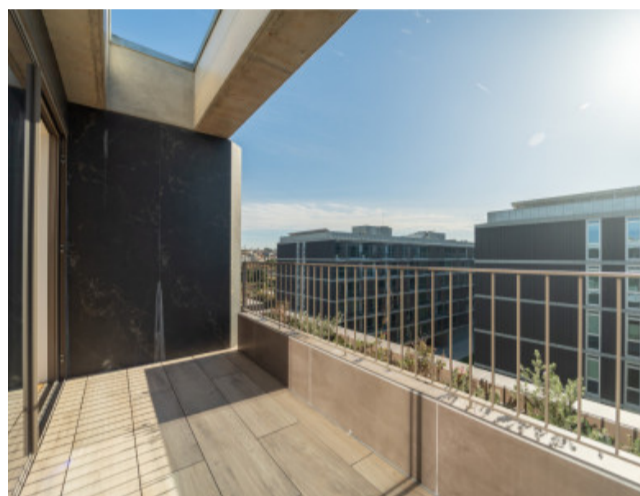
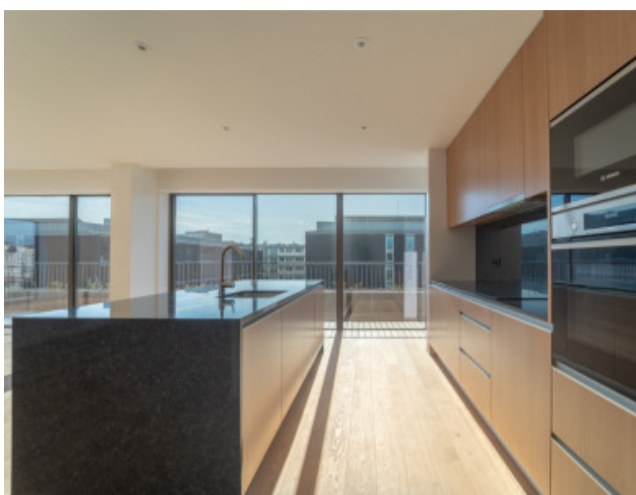
Living in Matosinhos Sul, in an area known for its beach, waterfront and city park, is excellent for being able to take a walk by the sea or in the green of the park, without having to use a car or other transport.

This ease of contact with the sea, countryside and the beach are great attractions for people who choose this area.

This new project is born in the quietest area of Matosinhos Sul, where you can live with the privilege of walking in a green environment, enjoying the sea, highlighting the maximum exclusivity and privacy of the project itself.

An excellent opportunity for own housing or investment, in one of the most solid and valued areas of Matosinhos.

## Gallery



logo

Telephone: +351 213 471 603

Email: [info@portugalhomes.com](mailto:info@portugalhomes.com)

Praça da Alegria 1, 3rd Floor, 1250-004 Lisboa, Portugal Licence AMI - 14414 | APEMIP 5940

## Additional Details

### Attributes

|                            |                            |                              |
|----------------------------|----------------------------|------------------------------|
| <b>Status</b><br>Available | <b>Net Area</b><br>267sq m | <b>Gross Area</b><br>267sq m |
| <b>Year Built</b><br>2025  |                            |                              |

## Site Floorplan

Telephone: +351 213 471 603

Email: [info@portugalhomes.com](mailto:info@portugalhomes.com)

Praça da Alegria 1, 3rd Floor, 1250-004 Lisboa, Portugal Licence AMI - 14414 | APEMIP 5940

logo