

€1,100,000

Ref: DL34811

124 sqm

1 bedroom flat with a gross private area of 101.01 m² and 23.14 m² of terraces, in Cascais Bay, in front of the sea.

Telephone: +351 213 471 603

Email: info@portugalhomes.com

Praça da Alegria 1, 3rd Floor, 1250-004 Lisboa, Portugal Licence AMI - 14414 | APEMIP 5940

logo not

Property Description

1 bedroom flat with a gross private area of 101.01 m² and 23.14 m² of terraces, in Cascais Bay, in front of the sea.

Apartment consisting of an entrance hall with 5.53m², a large living room with integrated kitchen in an open space concept with 43.68m², a spacious suite with high quality finishes with 19.15m² and a guest toilet. It also has a storage room and a parking space with electric charging.

The development has:

- 24-hour security
- Fully equipped gym
- Indoor and outdoor pools with sea views
- Extensive gardens and green areas
- Panoramic views of the Atlantic Ocean

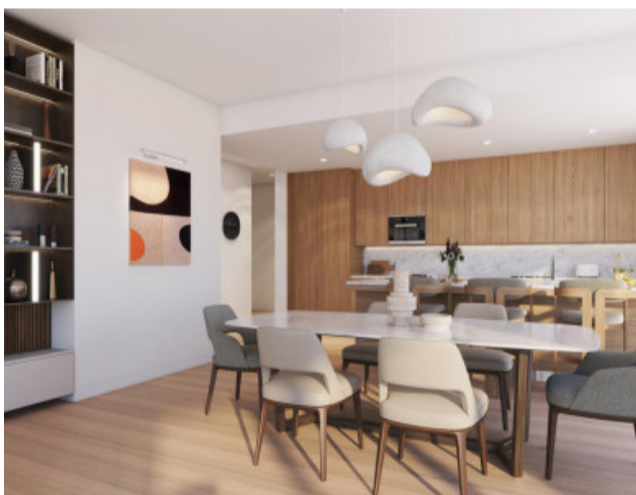
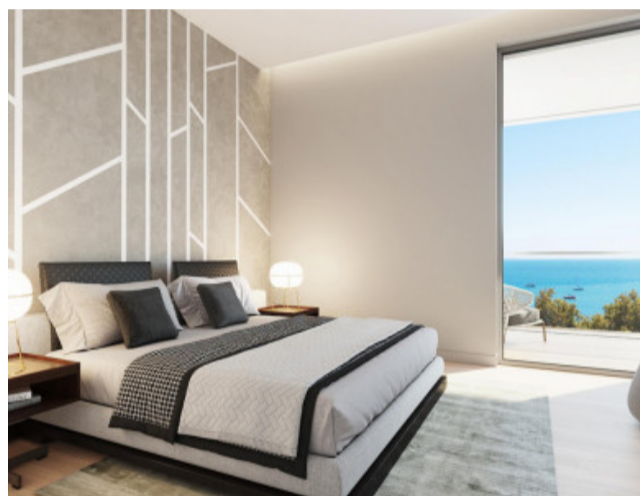
Assignment of Position – Luxury T1 with 124.15 m² total, inserted on the first floor of the prestigious Cascais Bay, a reference of exclusivity and comfort at the entrance to Cascais.

At the moment the flat is under construction. The end of construction is scheduled for the end of 2026.

Privileged location, in front of the sea and beaches, of Cascais, close to shops, restaurants and services. Easy access to the A5, Lisbon and international airport.

Cascais is one of the most sophisticated destinations in Portugal, known for its bay, cosmopolitan charm and exceptional quality of life. The village offers 7 golf courses, casino, marina and numerous leisure options — all just 30 minutes from Lisbon.

Gallery



logo

Telephone: +351 213 471 603

Email: info@portugalhomes.com

Praça da Alegria 1, 3rd Floor, 1250-004 Lisboa, Portugal Licence AMI - 14414 | APEMIP 5940

Additional Details

Attributes

| | | |
|----------------------------|----------------------------|------------------------------|
| Status Available | Net Area 124sq m | Gross Area 124sq m |
| Year Built 2026 | | |

Site Floorplan

logo

Telephone: +351 213 471 603

Email: info@portugalhomes.com

Praça da Alegria 1, 3rd Floor, 1250-004 Lisboa, Portugal Licence AMI - 14414 | APEMIP 5940