



**€1,900,000**

Ref: DL35029

381 sqm

4 bedroom villa, by the sea, in São Pedro do Estoril - Cascais, inserted in a development in the final stages of constru...

Telephone: +351 213 471 603

Email: [info@portugalhomes.com](mailto:info@portugalhomes.com)

Praça da Alegria 1, 3rd Floor, 1250-004 Lisboa, Portugal Licence AMI - 14414 | APEMIP 5940

logo not

## Property Description

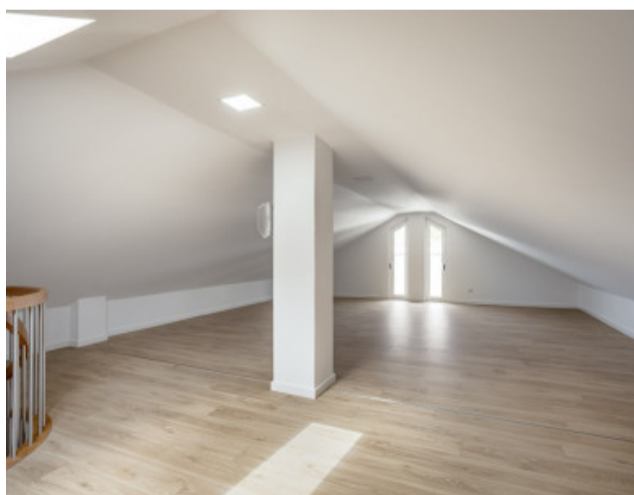
4 bedroom villa, by the sea, in São Pedro do Estoril - Cascais, inserted in a development in the final stages of construction with 12 villas available with communal swimming pool, good areas a few meters walk from the beach.

This property has a floor area of 195.43 m<sup>2</sup>, a patio of 176.34 m<sup>2</sup> and a garage with 137.51 m<sup>2</sup> with direct access to the house. It is spread over three floors plus attic, organised as follows:

On the main floor we find a large living and dining room with access to the terrace and garden, fully equipped kitchen, a bedroom and a full bathroom. On the upper floor, a suite and two additional bedrooms, served by a shared bathroom and with access to the attic. In the basement, a garage with capacity for more than three cars, storage area and laundry.

Located a few meters from the beach, the CP station and with easy access to the A5, this villa also benefits from the proximity of all traditional commerce and other essential services.

Completion scheduled for the end of 2025.



logo

Telephone: +351 213 471 603

Email: [info@portugalhomes.com](mailto:info@portugalhomes.com)

Praça da Alegria 1, 3rd Floor, 1250-004 Lisboa, Portugal Licence AMI - 14414 | APEMIP 5940

## Additional Details

Telephone: +351 213 471 603

Email: [info@portugalhomes.com](mailto:info@portugalhomes.com)

Praça da Alegria 1, 3rd Floor, 1250-004 Lisboa, Portugal Licence AMI - 14414 | APEMIP 5940

logo

## Site Floorplan

logo

Telephone: +351 213 471 603

Email: [info@portugalhomes.com](mailto:info@portugalhomes.com)

Praça da Alegria 1, 3rd Floor, 1250-004 Lisboa, Portugal Licence AMI - 14414 | APEMIP 5940