

€1,100,000

Ref: DL21128

3607 sqm

Land with approved Project of Tourist Village RIVERS 2020 5\*\*\*\*\*The Project is located on the bank of the Dour...

Telephone: +351 213 471 603  
 Email: info@portugalhomes.com

Praça da Alegria 1, 3rd Floor, 1250-004 Lisboa, Portugal Licence AMI - 14414 | APEMIP 5940

## Property Description

Land with approved Project of Tourist Village RIVERS 2020 5\*\*\*\*\*

The Project is located on the bank of the Douro River, inland, in the municipality of Marco de Canaveses, district of Porto.

Access to a private port on the Douro River just 200 metres away and to a public harbour just 4 km at the mouth of the Tâmega River.

The project was developed on a land area of 13.720m<sup>2</sup>. Total construction area 3.607m<sup>2</sup>.

Composed of 24 luxury accommodation units, distributed by typologies T0, T1 and T2 with only 1 floor. Possibility to receive 70 to 80 guests.

Can be extended up to 40 accommodation units/rooms.

Indoor and outdoor pool, Spa, wine cellar and vineyard.

The construction is designed for modules of different sizes.

The entire construction project was designed to access European investment funds, with a contribution of 70% to non-repayable funds.

It has a positive opinion of great relevance to the place by Turismo Porto e Norte and the environment agency.

Castelhana is a Portuguese real estate agency present in the domestic market for over 20 years, specialized in prime residential real estate and recognized for the launch of some of the most distinguished developments in Portugal.

Founded in 1999, Castelhana provides a full service in business brokerage. We are specialists in investment and in the commercialization of real estate.

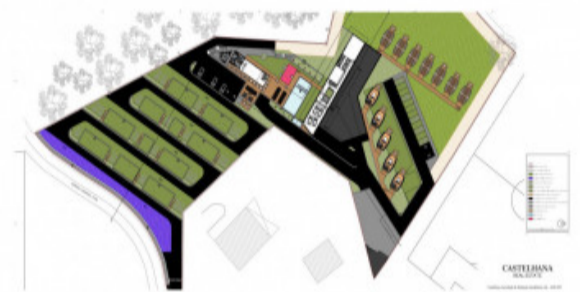
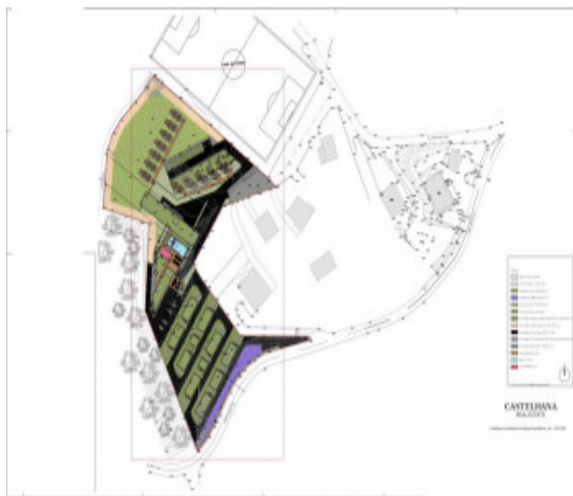
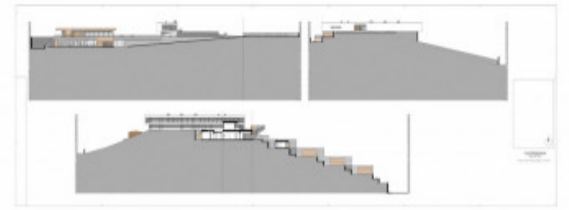
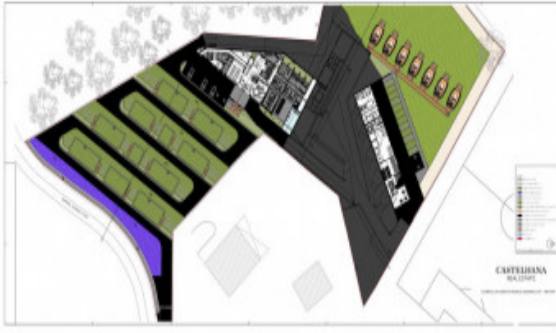
In Porto, we are based in Foz Do Douro, one of the noblest places in the city. In Lisbon, in Chiado, one of the most emblematic and traditional areas of the capital and in the Algarve region next to the renowned Vilamoura Marina.

We are waiting for you. We have a team available to give you the best support in your next real estate investment.

Contact us!

logo

# Gallery



logo

Telephone: +351 213 471 603

Email: [info@portugalhomes.com](mailto:info@portugalhomes.com)

Praça da Alegria 1, 3rd Floor, 1250-004 Lisboa, Portugal Licence AMI - 14414 | APEMIP 5940

## Additional Details

Telephone: +351 213 471 603

Email: [info@portugalhomes.com](mailto:info@portugalhomes.com)

Praça da Alegria 1, 3rd Floor, 1250-004 Lisboa, Portugal Licence AMI - 14414 | APEMIP 5940

logo

## Site Floorplan

logo

Telephone: +351 213 471 603

Email: [info@portugalhomes.com](mailto:info@portugalhomes.com)

Praça da Alegria 1, 3rd Floor, 1250-004 Lisboa, Portugal Licence AMI - 14414 | APEMIP 5940