



€1,650,000

Ref: DL33214

227 sqm

5 bedroom villa with 227m2 of built area, set on a plot of 7,519m2, located in the heart of the countryside, in Sobreira...

Telephone: +351 213 471 603
Email: info@portugalhomes.com

Praça da Alegria 1, 3rd Floor, 1250-004 Lisboa, Portugal Licence AMI - 14414 | APEMIP 5940

Property Description

5 bedroom villa with 227m² of built area, set on a plot of 7,519m², located in the heart of the countryside, in Sobreiras Altas.

It is divided into three distinct volumes. The main house with three bedrooms, two of which are en suite with access to the outside, an open space kitchen for the dining and living room, equipped with fireplace, and a bathroom. The other two volumes correspond to annexes with exterior and independent access, each of them a complete T1, with bedroom, bathroom and kitchenette with a private outdoor area with leisure and dining area.

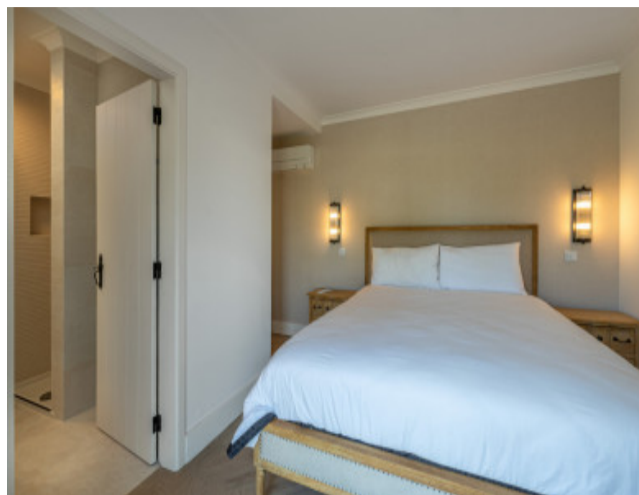
Outside, we also find a pleasant area with a wooden deck, outdoor dining table, barbecue, an organic lake and also a support bathroom and storage area. It also has a beach volleyball court and a petanque court.

At the entrance to the plot there is an organic vegetable garden and covered parking area, with automatic gate.

It has a traditional architecture but was renovated in 2021 where contemporary materials and finishes that offer greater comfort were privileged. It is equipped with central underfloor heating, air conditioning in all rooms, thermal double glazing and a modern security system.

Sobreiras Altas is a quiet area, located between Grândola and Melides, just 15 minutes driving distance from both towns, as well as 15 minutes from Carvalhal.

Gallery



logo

Telephone: +351 213 471 603

Email: info@portugalhomes.com

Praça da Alegria 1, 3rd Floor, 1250-004 Lisboa, Portugal Licence AMI - 14414 | APEMIP 5940

Additional Details

Telephone: +351 213 471 603

Email: info@portugalhomes.com

Praça da Alegria 1, 3rd Floor, 1250-004 Lisboa, Portugal Licence AMI - 14414 | APEMIP 5940

logo

Site Floorplan

Telephone: +351 213 471 603

Email: info@portugalhomes.com

Praça da Alegria 1, 3rd Floor, 1250-004 Lisboa, Portugal Licence AMI - 14414 | APEMIP 5940

logo