



€599,000

Ref: PP176416

153 sqm

This charming two-bedroom apartment is set within a prestigious private condominium in a quiet residential area of Vilamoura, close to golf courses, the marina and the surrounding beaches. Bright and...

• Pool

• A/C

Telephone: +351 213 471 603

Email: info@portugalhomes.com

Praça da Alegria 1, 3rd Floor, 1250-004 Lisboa, Portugal Licence AMI - 14414 | APEMIP 5940

logo not

Property Description

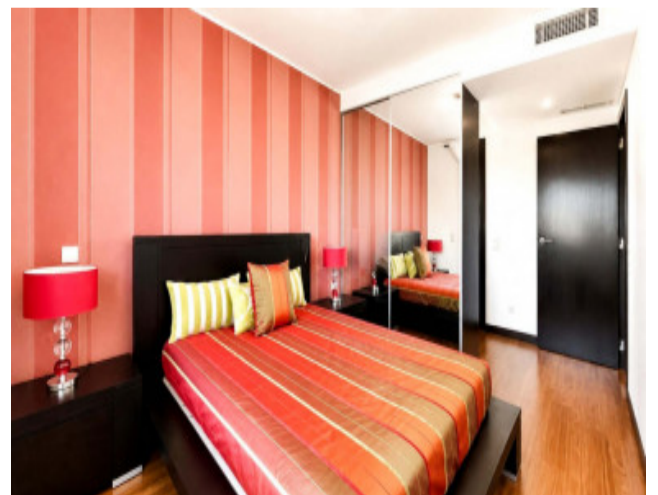
This charming two-bedroom apartment is set within a prestigious private condominium in a quiet residential area of Vilamoura, close to golf courses, the marina and the surrounding beaches.

Bright and well presented, the apartment offers comfortable living in one of the Algarve's most popular resort destinations. The living room opens directly onto a cosy balcony, creating an inviting space for outdoor dining while enjoying views over the swimming pool and manicured communal gardens.

The modern, fully equipped kitchen includes a practical laundry area, adding everyday convenience to the property.

The accommodation comprises two comfortable bedrooms, one of which is en suite, along with an additional shared bathroom. This layout provides good privacy and functionality for holidays, rental use or year-round living.

Additional features include air conditioning and a private parking space. With its peaceful setting, condominium facilities and easy access to Vilamoura's golf, beaches and marina, this apartment is an excellent opportunity for those seeking a stylish and low-maintenance Algarve home.



logo

Telephone: +351 213 471 603

Email: info@portugalhomes.com

Praça da Alegria 1, 3rd Floor, 1250-004 Lisboa, Portugal Licence AMI - 14414 | APEMIP 5940

Additional Details

Attributes

Status Available	Net Area 153sq m	Gross Area 153sq m
Year Built 2008		

Property Features

Pool	A/C
------	-----

Site Floorplan

logo

Telephone: +351 213 471 603

Email: info@portugalhomes.com

Praça da Alegria 1, 3rd Floor, 1250-004 Lisboa, Portugal Licence AMI - 14414 | APEMIP 5940