



€1,850,000

Ref: JL-95353

Villa with 234 sqm of built area, set on a plot of 816 sqm, located in the Possanco development, just 2.5 km from Comporta and Comporta Beach. The property features three en-suite b...

- A/C
- Alarm
- Dishwasher
- Fridge
- Washing Machine

Telephone: +351 213 471 603  
Email: info@portugalhomes.com

Praça da Alegria 1, 3rd Floor, 1250-004 Lisboa, Portugal Licence AMI - 14414 | APEMIP 5940

## Property Description

Villa with 234 sqm of built area, set on a plot of 816 sqm, located in the Possanco development, just 2.5 km from Comporta and Comporta Beach.

The property features three en-suite bedrooms and a spacious 50 sqm living room with a fully equipped open-plan kitchen.

High-quality finishes bring elegance and comfort to the interior spaces, complemented by air conditioning and a fireplace with heat recovery system.

The plot offers 580 sqm of private garden, with a swimming pool and barbecue area, providing leisure moments in complete privacy.

The property benefits from privileged sun exposure and strategically placed shaded areas.

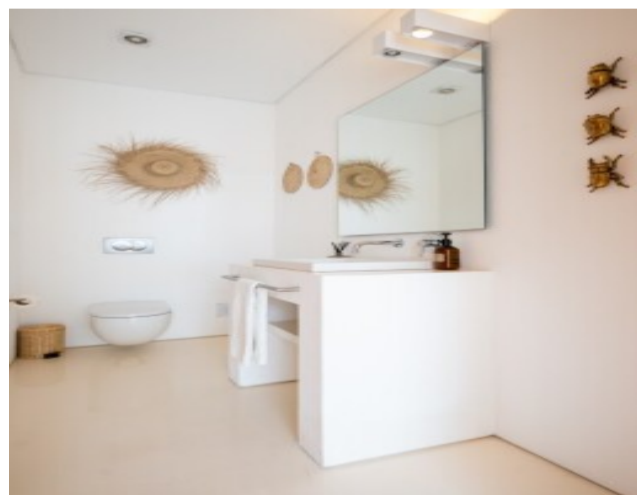
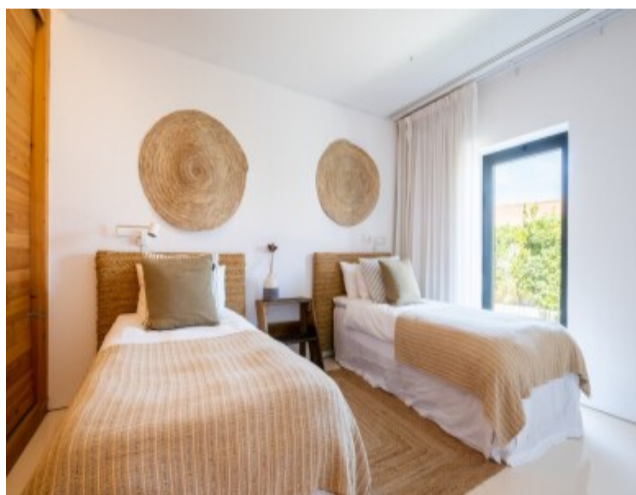
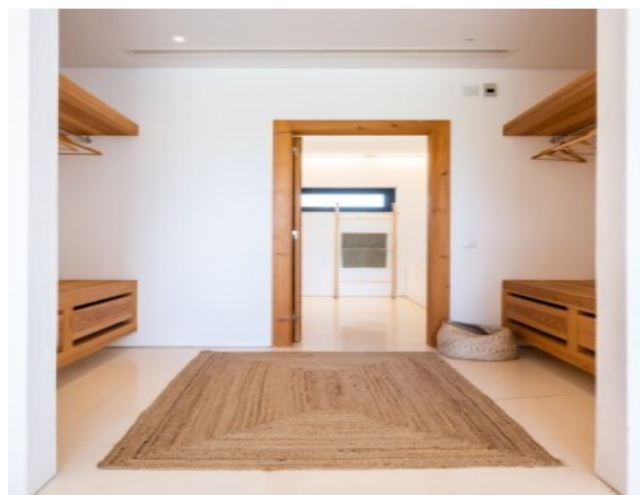
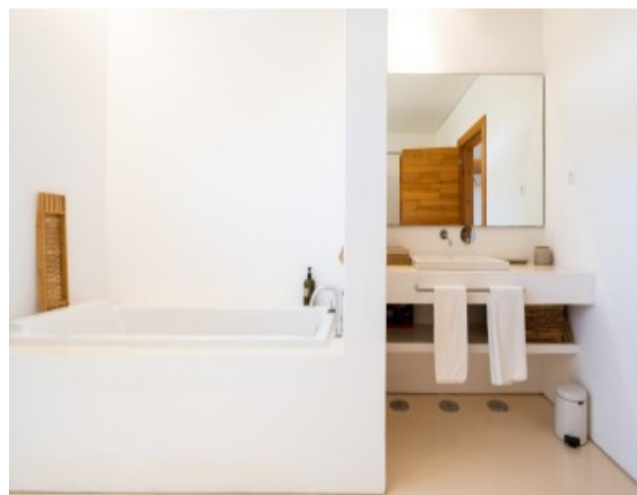
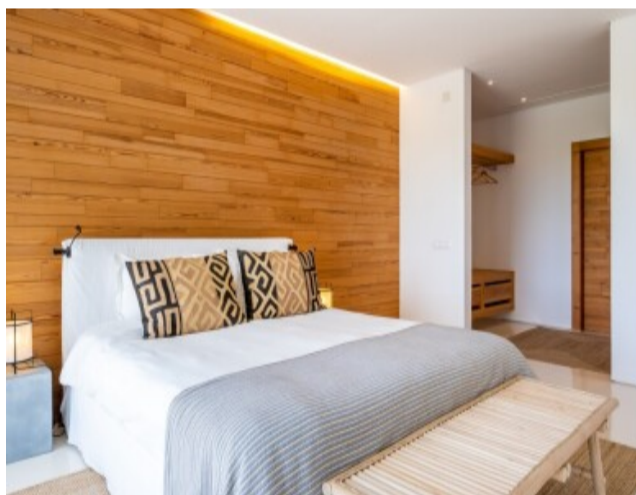
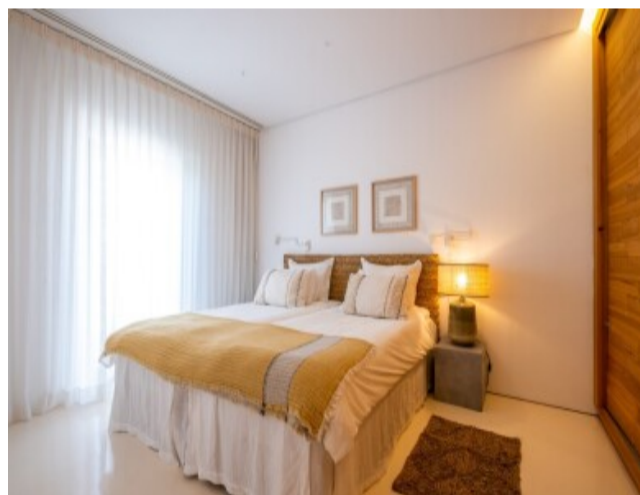
Set in a preserved natural environment, the villa offers unobstructed views over the region's characteristic rice fields.

The location ensures absolute privacy while maintaining close proximity to the beaches, amenities, and services of Comporta.

It is located 2 minutes' drive from Comporta, 5 minutes' drive from Comporta Beach, 10 minutes' drive from Carvalhal, 15 minutes' drive from Sol Troia, and 20 minutes' drive from Troia and Atlantic Ferries.

The main urban centers of the region (Alcácer do Sal and Grândola) are 30 minutes away, and Lisbon is 1 hour away.

# Gallery



logo

Telephone: +351 213 471 603

Email: [info@portugalhomes.com](mailto:info@portugalhomes.com)

Praça da Alegria 1, 3rd Floor, 1250-004 Lisboa, Portugal Licence AMI - 14414 | APEMIP 5940

## Additional Details

### Property Features

|        |                 |            |
|--------|-----------------|------------|
| A/C    | Alarm           | Dishwasher |
| Fridge | Washing Machine |            |

## Site Floorplan

