



€800,000

Ref: DL34085

197 sqm

3 + 2 bedroom flat with 197m² of total area, terrace and garage. The main flat is a T3 consisting of a large l...

Telephone: +351 213 471 603

Email: info@portugalhomes.com

Praça da Alegria 1, 3rd Floor, 1250-004 Lisboa, Portugal Licence AMI - 14414 | APEMIP 5940

logo not

Property Description

3 + 2 bedroom flat with 197m² of total area, terrace and garage.

The main flat is a T3 consisting of a large living room in open space with the kitchen, a suite and two bedrooms with direct access to the terrace. Sun exposure is guaranteed throughout the day.

The modern line kitchen is fully equipped with Siemens appliances.

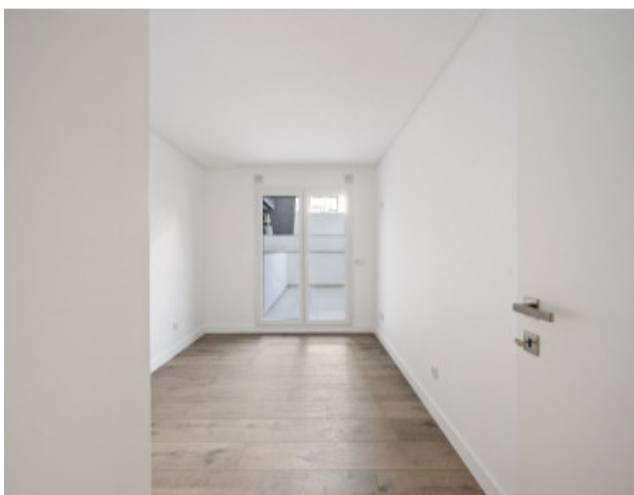
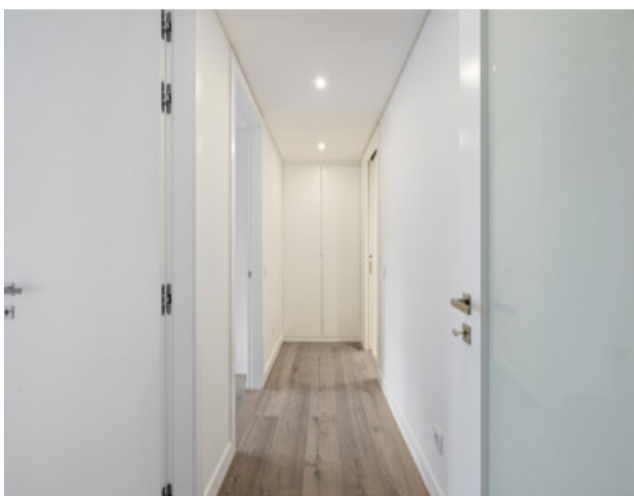
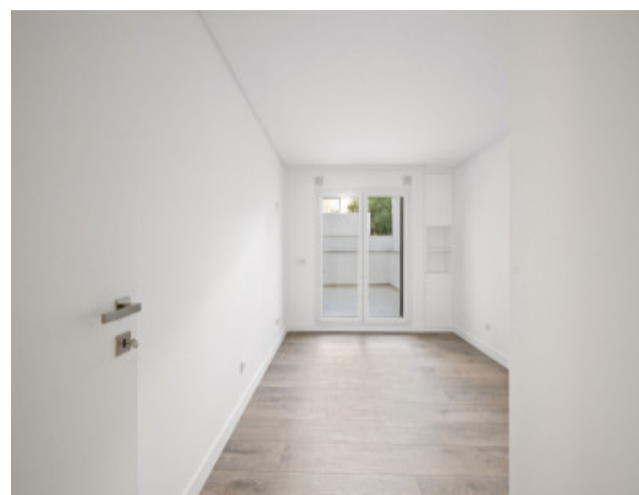
The bedrooms have built-in closets for practical storage and the two bathrooms are complete and of good dimensions.

The property has quality finishes, double-glazed windows, electric and thermal shutters, air conditioning, false ceilings with LED lighting and armoured door. There is also parking for one car.

To this fraction also belongs an additional space of 68m² already transformed into T2, offering the possibility of profitability or independent use for family or work.

Living on the South Bank is having quality of life every day. With a mild microclimate throughout the year, beaches just minutes away and a unique natural environment, this is an increasingly sought after destination for those who want tranquillity without giving up proximity to Lisbon. Here you will find the perfect balance between nature, leisure and accessibility, with excellent connections to transport, commerce, restaurants, schools and services.

Gallery



logo

Telephone: +351 213 471 603

Email: info@portugalhomes.com

Praça da Alegria 1, 3rd Floor, 1250-004 Lisboa, Portugal Licence AMI - 14414 | APEMIP 5940

Additional Details

Telephone: +351 213 471 603

Email: info@portugalhomes.com

Praça da Alegria 1, 3rd Floor, 1250-004 Lisboa, Portugal Licence AMI - 14414 | APEMIP 5940

logo

Site Floorplan

Telephone: +351 213 471 603

Email: info@portugalhomes.com

Praça da Alegria 1, 3rd Floor, 1250-004 Lisboa, Portugal Licence AMI - 14414 | APEMIP 5940

logo