



**€780,000**

Ref: DL37876

163 sqm

2 bedroom duplex villa in Troia, with 152 m<sup>2</sup> of private gross area, spread over two floors and inserted in the private c...

Telephone: +351 213 471 603

Email: [info@portugalhomes.com](mailto:info@portugalhomes.com)

Praça da Alegria 1, 3rd Floor, 1250-004 Lisboa, Portugal Licence AMI - 14414 | APEMIP 5940

logo not

## Property Description

2 bedroom duplex villa in Troia, with 152 m<sup>2</sup> of private gross area, spread over two floors and inserted in the private condominium Ocean Village. This residence has two suites, three bathrooms, open space living and dining room, fully equipped kitchen, outdoor terrace with dining area, exclusive garden, storage room and two parking spaces.

On the ground floor, the social area stands out for its luminosity and spaciousness, thanks to the wooden flooring and the integration of the living and dining room with the modern kitchen in open space. This space benefits from direct access to the terrace and private garden, ideal for outdoor leisure time. On this floor there is also a guest bathroom, providing additional comfort for visitors.

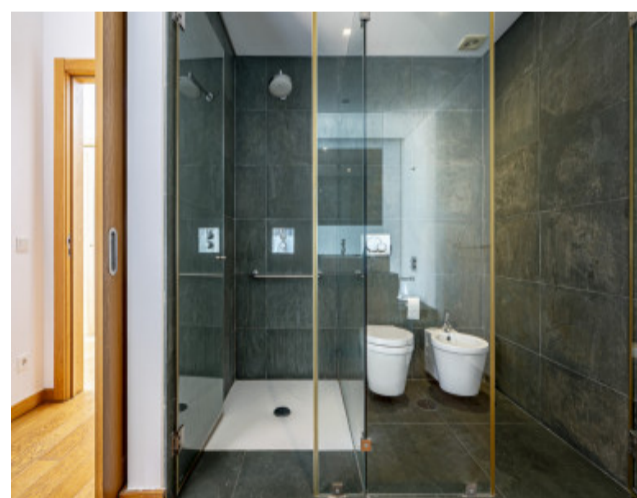
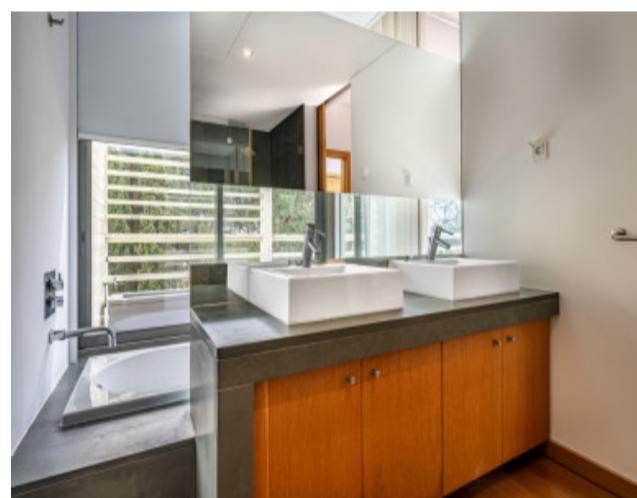
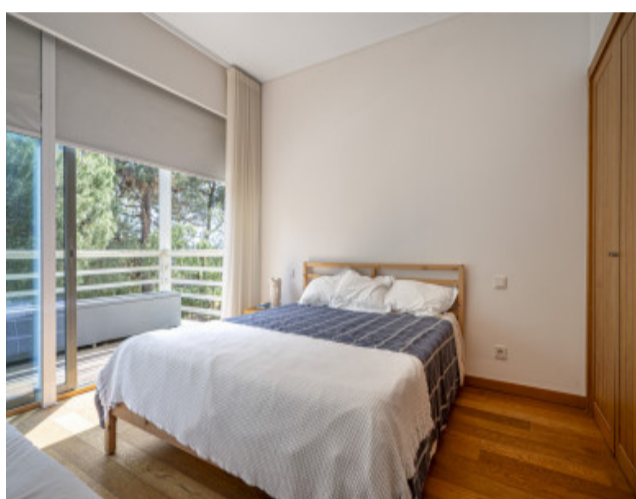
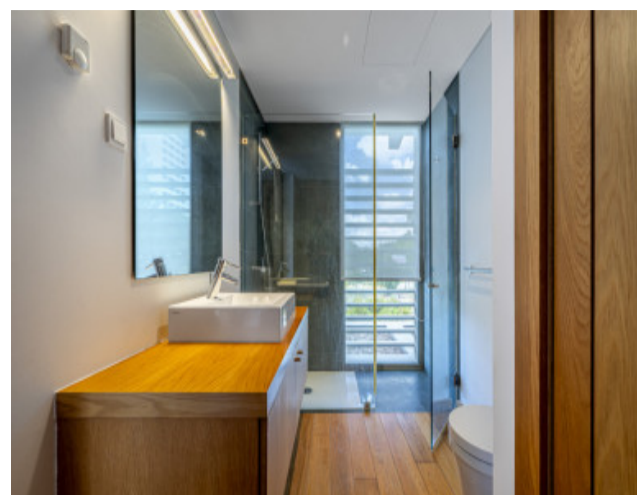
The ground floor offers two suites with built-in wardrobes and good sun exposure. One of the suites has a bathroom with a bathtub and shower. All spaces have quality finishes, privileging comfort and functionality.

The villa is furnished, including outdoor furniture, and is equipped with air conditioning, solar panels and a wooden deck. The condominium offers 24-hour surveillance, maintenance of common areas, access to a medical centre and property management and tourist exploration services. The exclusive garden ensures privacy and contact with nature.

Located in a quiet area and surrounded by green spaces, the villa is within walking distance of Troia marina, beaches, restaurants, supermarkets and essential services. In a few minutes by bike you can reach Troia Golf and, by car, you are about 10 minutes from Comporta, with easy access to the ferry and catamaran to Setúbal. The area is characterised by safety, accessibility and proximity to tourist landmarks on the Troia Peninsula and Alentejo Coast.

Ideal for those looking for comfort, privacy and quality of life by the sea.

# Gallery



logo

Telephone: +351 213 471 603

Email: [info@portugalhomes.com](mailto:info@portugalhomes.com)

Praça da Alegria 1, 3rd Floor, 1250-004 Lisboa, Portugal Licence AMI - 14414 | APEMIP 5940

## Additional Details

Telephone: +351 213 471 603

Email: [info@portugalhomes.com](mailto:info@portugalhomes.com)

Praça da Alegria 1, 3rd Floor, 1250-004 Lisboa, Portugal Licence AMI - 14414 | APEMIP 5940

logo

## Site Floorplan

Telephone: +351 213 471 603

Email: [info@portugalhomes.com](mailto:info@portugalhomes.com)

Praça da Alegria 1, 3rd Floor, 1250-004 Lisboa, Portugal Licence AMI - 14414 | APEMIP 5940

logo