



**€630,000**

Ref: DL37210

101 sqm

2+1 bedroom flat, new construction, with a private gross area of 101 m2, deck and swimming pool with sea view....

Telephone: +351 213 471 603

Email: [info@portugalhomes.com](mailto:info@portugalhomes.com)

Praça da Alegria 1, 3rd Floor, 1250-004 Lisboa, Portugal Licence AMI - 14414 | APEMIP 5940

logo not

## Property Description

2+1 bedroom flat, new construction, with a private gross area of 101 m<sup>2</sup>, deck and swimming pool with sea view.

This unit is located in the Pestana Porto Covo Village condominium, located in the centre of the village of Porto Covo and a few meters from Praia Grande de Porto Covo.

The flat is equipped with air conditioning in all rooms and a fully equipped kitchen.

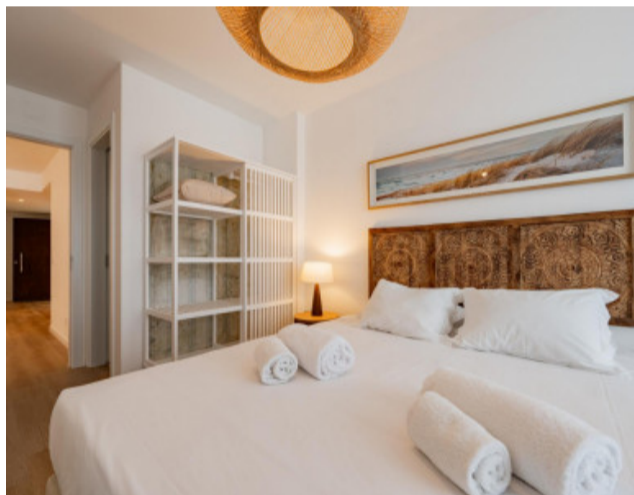
This unit is available in fractional use, and it has 4 owners with the right to use the unit for 90 days a year, divided into 15 days of enjoyment every 2 months.

The location is indeed great as it is located 10 minutes (700 meters) walk from the Grande beach of Porto Covo and 5 minutes walk from the best restaurants and village centre.

It is located 20 minutes driving distance from Sines city centre and Cercal do Alentejo.

It is 1 hour and 30 minutes driving distance from Lisbon International Airport.

Note/Disclaimer: The photographs shown are indicative, being the model flat.



logo

Telephone: +351 213 471 603

Email: [info@portugalhomes.com](mailto:info@portugalhomes.com)

Praça da Alegria 1, 3rd Floor, 1250-004 Lisboa, Portugal Licence AMI - 14414 | APEMIP 5940

## Additional Details

Telephone: +351 213 471 603

Email: [info@portugalhomes.com](mailto:info@portugalhomes.com)

Praça da Alegria 1, 3rd Floor, 1250-004 Lisboa, Portugal Licence AMI - 14414 | APEMIP 5940

logo

## Site Floorplan

Telephone: +351 213 471 603

Email: [info@portugalhomes.com](mailto:info@portugalhomes.com)

Praça da Alegria 1, 3rd Floor, 1250-004 Lisboa, Portugal Licence AMI - 14414 | APEMIP 5940

logo