

# €13,200,000

Ref: PP176063

889 sqm

Set within meticulously landscaped gardens in the heart of Vilamoura, this exceptional villa embodies modern luxury and timeless elegance. Spanning over 3 levels of living space, the residence combines...

• Pool

• A/C

• Garden

Telephone: +351 213 471 603

Email: [info@portugalhomes.com](mailto:info@portugalhomes.com)

Praça da Alegria 1, 3rd Floor, 1250-004 Lisboa, Portugal Licence AMI - 14414 | APEMIP 5940

logo not

## Property Description

Set within meticulously landscaped gardens in the heart of Vilamoura, this exceptional villa embodies modern luxury and timeless elegance. Spanning over 3 levels of living space, the residence combines premium Italian finishes, natural stone, and Maretti marble with world-class amenities, offering both privacy and an unparalleled lifestyle.

### Outdoor Living & Leisure

The estate is enveloped by 4,411 m<sup>2</sup> of manicured gardens, illuminated flower beds, and mature fruit trees. Multiple terraces and a nearly 100 m<sup>2</sup> swimming pool create an ideal setting for entertaining, while a covered pergola invites alfresco dining or cocktail hours. Recreational facilities include a full-size tennis court with evening lighting, a permanent trampoline, a basketball hoop, and flexible play areas for children.

### Grand Interiors

Entering through a pillared driveway and marble-tiled foyer, the villa impresses with natural stone walls, LED-accented Maretti marble steps, and a gas fireplace subtly integrated behind custom mirrors. Living areas are furnished with Minotti sofas and Flos lighting, complemented by gallery-style spaces for art and sculptures.

### Gourmet Kitchen & Dining

The fully remodeled kitchen features top-of-the-line appliances, Italian cabinetry, stone countertops, and a walk-in pantry. Dining spaces showcase B&B Italia furnishings and bespoke Flos pendant lighting, perfect for both casual breakfasts and formal dinners.

### Bedrooms & Suites

The villa offers five luxurious bedrooms, including a master suite with a private terrace, walk-in closets, a Jacuzzi bath, and multi-colour LED mood lighting. Nine bathrooms feature Villeroy & Boch fixtures, heated towel rails, and marble tiling. Automated blinds and Sonos multi-zone audio enhance comfort and convenience in every room.

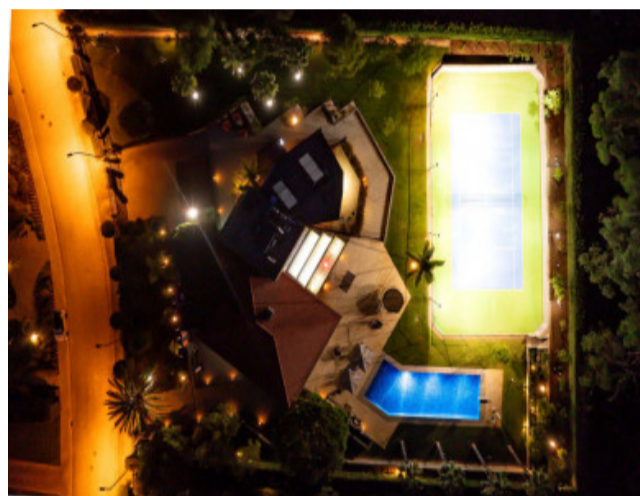
### Guest & Staff Accommodation

A separate one-bedroom guest apartment with a kitchenette, living area, and ensuite bathroom allows independent operation for visitors or short-term rentals. Staff quarters include laundry and prep areas linked directly to the main kitchen.

### Basement & Leisure Complex

The lower level houses a fully equipped gym, Finnish sauna, cold-plunge shower, massage area, and billiards table. The space is versatile, with options for additional bedrooms, entertainment, or bar/lounge areas.

# Gallery



logo

Telephone: +351 213 471 603

Email: [info@portugalhomes.com](mailto:info@portugalhomes.com)

Praça da Alegria 1, 3rd Floor, 1250-004 Lisboa, Portugal Licence AMI - 14414 | APEMIP 5940

## Additional Details

### Attributes

<b>Status</b> Available	<b>Net Area</b> 889sq m	<b>Gross Area</b> 889sq m
<b>Year Built</b> 2014		

### Property Features

Pool	A/C	Garden
------	-----	--------

logo

Telephone: +351 213 471 603

Email: [info@portugalhomes.com](mailto:info@portugalhomes.com)

Praça da Alegria 1, 3rd Floor, 1250-004 Lisboa, Portugal Licence AMI - 14414 | APEMIP 5940

## Site Floorplan

logo

Telephone: +351 213 471 603

Email: [info@portugalhomes.com](mailto:info@portugalhomes.com)

Praça da Alegria 1, 3rd Floor, 1250-004 Lisboa, Portugal Licence AMI - 14414 | APEMIP 5940