



€1,680,000

Ref: JL-96908

3-bedroom duplex apartment, with 193 sqm of gross private area and 29 sqm of dependent area, with terrace, garage and storage room, located in a prestigious gated community, in Quin...

- A/C
- Balcony
- Dishwasher
- Lift
- Gym
- Oven
- Garden
- Garage
- Washing Machine

Telephone: +351 213 471 603  
Email: info@portugalhomes.com

Praça da Alegria 1, 3rd Floor, 1250-004 Lisboa, Portugal Licence AMI - 14414 | APEMIP 5940

## Property Description

3-bedroom duplex apartment, with 193 sqm of gross private area and 29 sqm of dependent area, with terrace, garage and storage room, located in a prestigious gated community, in Quinta da Marinha Sul, Cascais.

The apartment comprises an entrance hall, one ensuite bedroom, two bedrooms and one shared bathroom, all with direct access to the terrace and unobstructed views.

On the upper floor is the fully equipped kitchen and a spacious living room with access to a terrace overlooking the garden and nature, very characteristic of this area.

The apartment is set within a high-quality 5-star tourist resort of contemporary architecture, with extensive green areas, next to the Atlantic, just minutes from the cosmopolitan town of Cascais.

The resort integrates into an area with ample gardens and offers concierge service, reception and 24-hour security, swimming pools, spa, gym and luxury apartments, operating in an exclusive residential and hotel area.

The condominium provides exclusive experiences, with renowned restaurants and bars (Yakuza Cascais, Glass Terrace, Flow Pool Bar), as well as Serenity – The Art of Well Being, health club, semi-heated swimming pool and extensive gardens.

The Sheraton Cascais Resort was widely recognized in 2025, standing out as Best Luxury Family Resort in Portugal by the Luxury Lifestyle Awards and as Portugal's Leading Hotel Residences 2025 at the World Travel Awards.

The five-star resort, located in Quinta da Marinha, is praised for its family-friendly atmosphere, spa and swimming pools.

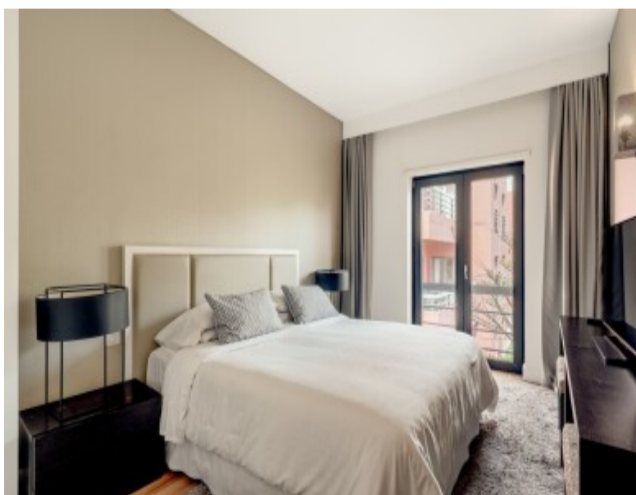
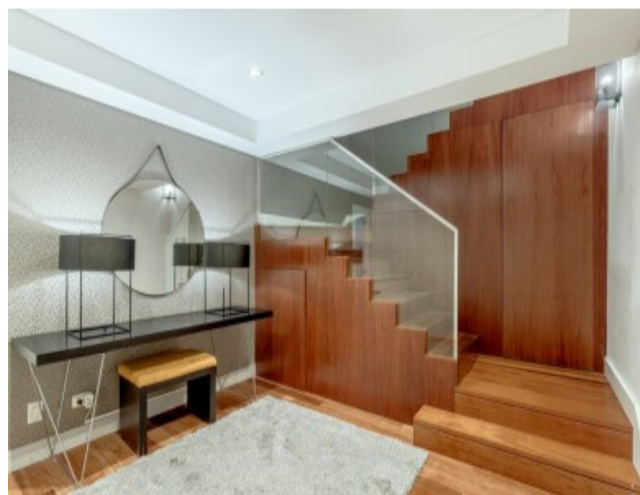
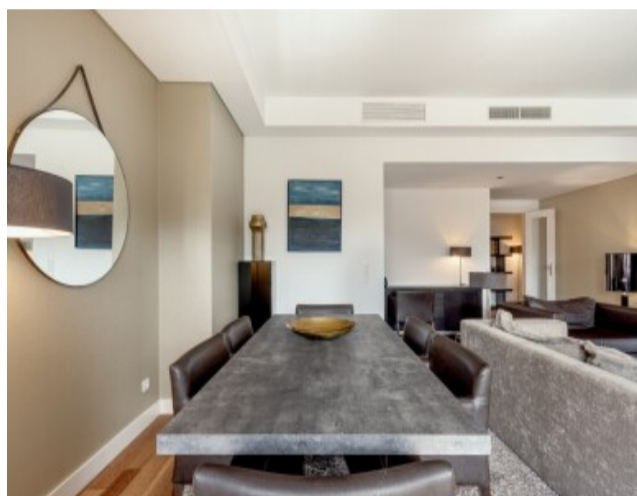
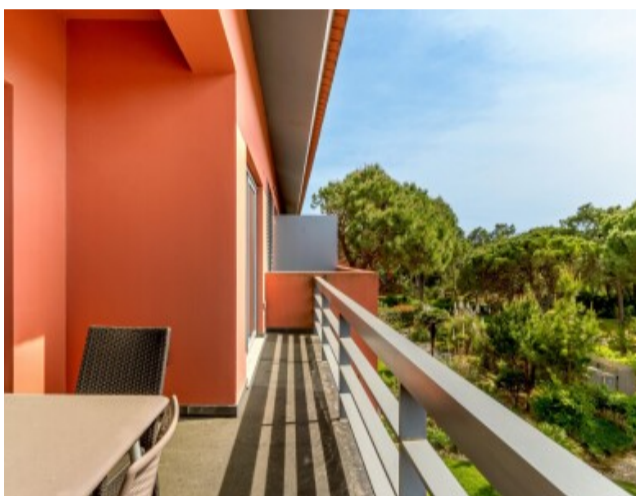
Due to its prime location, it allows easy access to beaches, terraces, bars, restaurants, European-renowned golf courses, five-star hotels, equestrian center, gyms and tennis and padel schools.

Located in Quinta da Marinha, in a very quiet area, close to the sea and the cycling path connecting Cascais to Praia do Guincho, the property is 5 minutes walking distance from Centro Hípico da Quinta da Marinha, Quinta da Marinha Health Club, Oitavos Dunes golf course and the Onyria Quinta da Marinha Hotel and Sheraton Cascais Resort hotels.

It is also 5 minutes driving distance from Cascais center, 14 minutes driving distance from Escola Salesianos do Estoril, Deutsche Schule Estoril and Santo António International School, 20 minutes driving distance from St.

Julian's School, 5 minutes driving distance from access to the A5 motorway and 30 minutes driving distance from Lisbon Airport.

# Gallery



logo

Telephone: +351 213 471 603

Email: [info@portugalhomes.com](mailto:info@portugalhomes.com)

Praça da Alegria 1, 3rd Floor, 1250-004 Lisboa, Portugal Licence AMI - 14414 | APEMIP 5940

## Additional Details

### Property Features

A/C	Lift	Garden
Balcony	Gym	Garage
Dishwasher	Oven	Washing Machine

logo

Telephone: +351 213 471 603

Email: [info@portugalhomes.com](mailto:info@portugalhomes.com)

Praça da Alegria 1, 3rd Floor, 1250-004 Lisboa, Portugal Licence AMI - 14414 | APEMIP 5940

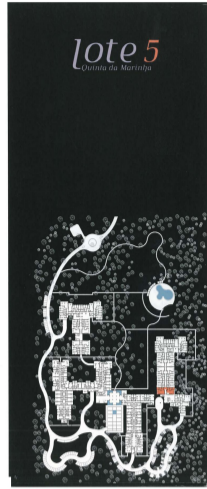
# Site Floorplan



ÁREA BRUTA DE CONSTRUÇÃO 23640  
ÁREA DE TERREÇO 3600  
ÁREA TOTAL 27240  
ARREDOUADURA 90 14 240  
21,5 x 23

## ACABAMENTOS

- ÁREA
  - Pavimento: cerâmica a 60x60
  - Paredes: revestido de cerâmica
- QUARTOS
  - Pavimento: cerâmica a 60x60
  - Paredes: revestido de cerâmica
- SOCOS
  - Pavimento: cerâmica a 60x60
  - Paredes: revestido de cerâmica
- COZINHA
  - Pavimento: cerâmica a 60x60
  - Paredes: revestido de cerâmica
- W.C.
  - Pavimento: cerâmica a 60x60
  - Paredes: revestido de cerâmica
- ÁREA DE SERVIÇO
  - Pavimento: cerâmica a 60x60
  - Paredes: revestido de cerâmica
- ÁREA DE ESTAR
  - Pavimento: cerâmica a 60x60
  - Paredes: revestido de cerâmica
- ÁREA DE JARDIM
  - Pavimento: cerâmica a 60x60
  - Paredes: revestido de cerâmica
- ÁREA DE GARAGEM
  - Pavimento: cerâmica a 60x60
  - Paredes: revestido de cerâmica



Este folheto é meramente informativo. As fotografias não constam do conteúdo legal construído.