

€1,995,000

Ref: JL-96902

5-bedroom villa with 380 sqm of gross construction area, with garden and swimming pool, within a gated community, set on a 981 m² plot, in Tróia, Comporta. Designed in 2019 by renov...

- A/C
- Video Intercom
- Oven
- Garden
- Dishwasher
- Washing Machine
- Outdoor Parking
- Fridge

Telephone: +351 213 471 603

Email: info@portugalhomes.com

Praça da Alegria 1, 3rd Floor, 1250-004 Lisboa, Portugal Licence AMI - 14414 | APEMIP 5940

Property Description

5-bedroom villa with 380 sqm of gross construction area, with garden and swimming pool, within a gated community, set on a 981 m² plot, in Tróia, Comporta.

Designed in 2019 by renowned architect Miguel Marcelino, this is a minimalist house with open spaces, clean lines and neutral colours.

Distributed across two floors, the main floor features an entrance hall, living room, dining room, kitchen equipped with Siemens appliances, utility room and two bedrooms, one en suite and one bedroom with a guest bathroom.

On the upper floor there are three bedrooms, all en suite, two of them with spacious terraces.

Outside there is a swimming pool, a bathroom and barbecue area.

It has a garage box for one car and parking for two to three cars.

In terms of finishes, the house has Lioz limestone in the kitchen and bathrooms, bespoke double-glazed windows, Artebel thermal walls, air conditioning in all rooms and solar panels for water heating.

Located in the prestigious Soltróia development, the house is 400 metres from the beach and situated 40 km south of Lisbon.

The development operates with permanent security and includes gardens, communal swimming pools, tennis courts, supermarket, bars and an artificial lake.

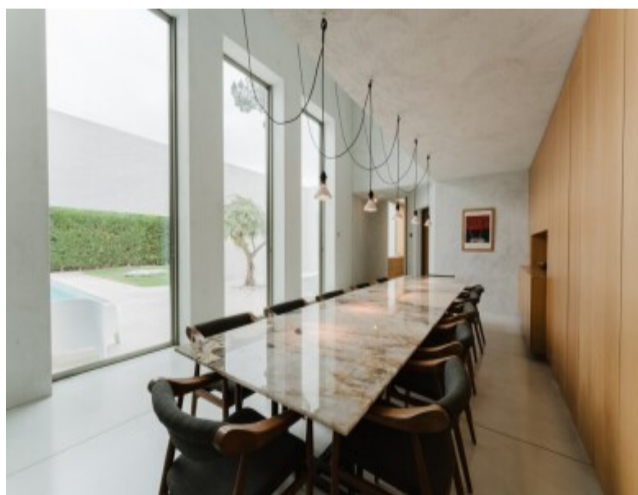
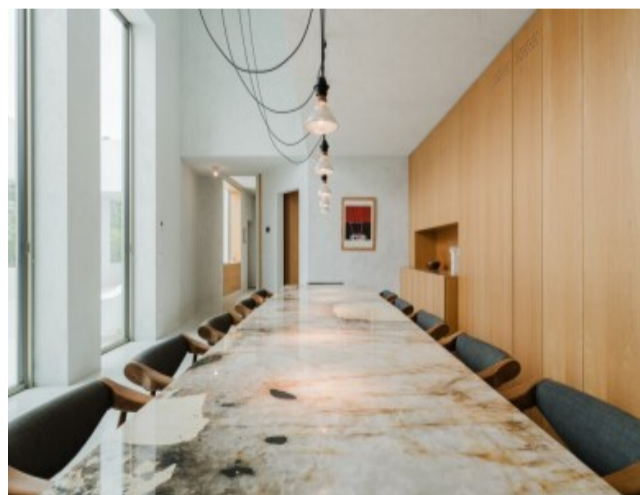
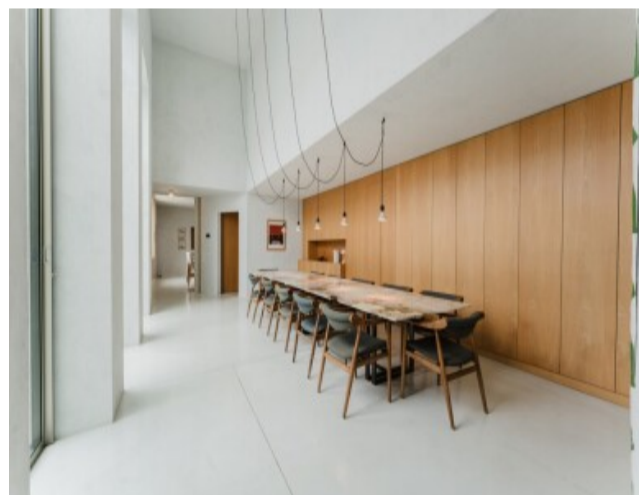
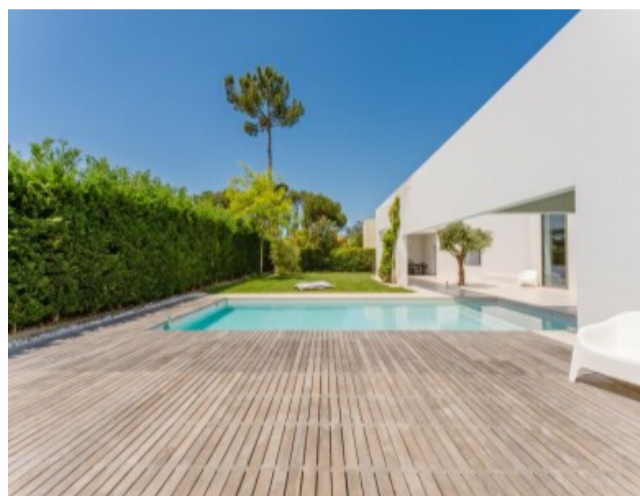
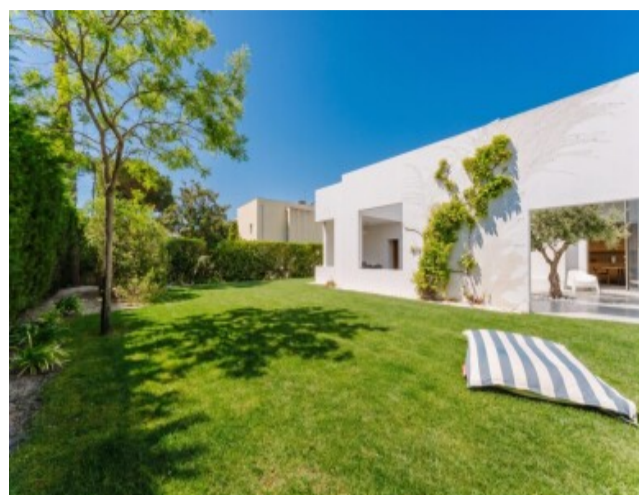
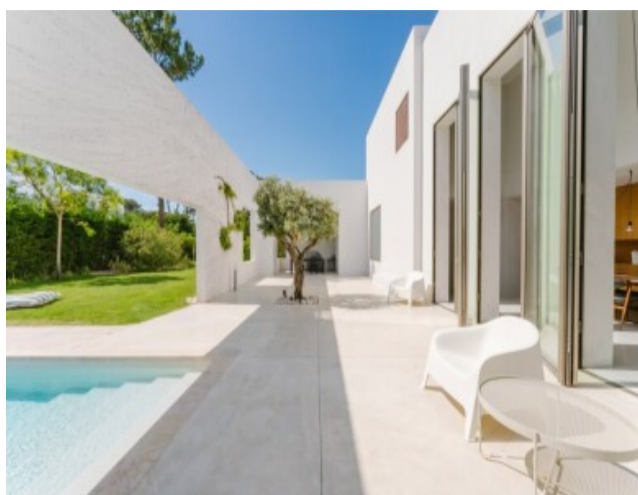
It is situated in a protected area, offering direct access to both the Atlantic beach and riverside areas along the Sado.

The region offers various activities for the whole family.

It has connections via water taxi or ferry from Setúbal port, through two river terminals: the commerce dock (ferries) and pier 3 (catamarans), which provide the shortest connection to Tróia and to Humberto Delgado Airport, Lisbon.

Less than 1 hour from Alcácer do Sal and just a few kilometres from Comporta and Carvalhal.

Gallery



logo

Telephone: +351 213 471 603

Email: info@portugalhomes.com

Praça da Alegria 1, 3rd Floor, 1250-004 Lisboa, Portugal Licence AMI - 14414 | APEMIP 5940

Additional Details

Property Features

A/C	Garden	Outdoor Parking
Video Intercom	Dishwasher	Fridge
Oven	Washing Machine	

