



€955,000

Ref: JL-96821

Morada T9 com 577 m² de área bruta de construção, inserida num terreno murado de 680 m², com jardim e estacionamento para duas viaturas, no centro histórico de Évora. Stately prope...

• Balcony

• Fireplace

• Alarm

Telephone: +351 213 471 603

Email: info@portugalhomes.com

Praça da Alegria 1, 3rd Floor, 1250-004 Lisboa, Portugal Licence AMI - 14414 | APEMIP 5940

logo not

Property Description

Morada T9 com 577 m² de área bruta de construção, inserida num terreno murado de 680 m², com jardim e estacionamento para duas viaturas, no centro histórico de Évora.

Stately property distributed over 3 floors, with original construction from the 1930s requiring complete refurbishment and restoration.

Building footprint of 182 m² and facades oriented to all four cardinal points, comprising a total of 18 rooms and an attic with storage.

The elevated ground floor, with external staircase access and 182 m² of area, includes a spacious entrance hall, a 60 m² living room with fireplace divided into living and dining areas, an office, a bedroom, a large kitchen with laundry area, a pantry, a dining room, and a bathroom.

Notable feature is the wide enclosed 'loggia'-style veranda of 40 m² along the south facade, with walls covered in antique tiles and stone columns.

The first floor, with 182 m², features 3 bedrooms of 25 m² each and a 60 m² suite with separate sleeping and dressing areas, a bow window, a 20 m² bathroom, and access to a 24 m² terrace.

The basement level includes two annexes with direct access from the garden: one with approximately 125 m² (3 rooms, kitchen, and wine cellar) and another with 15 m² (bedroom with kitchenette and bathroom).

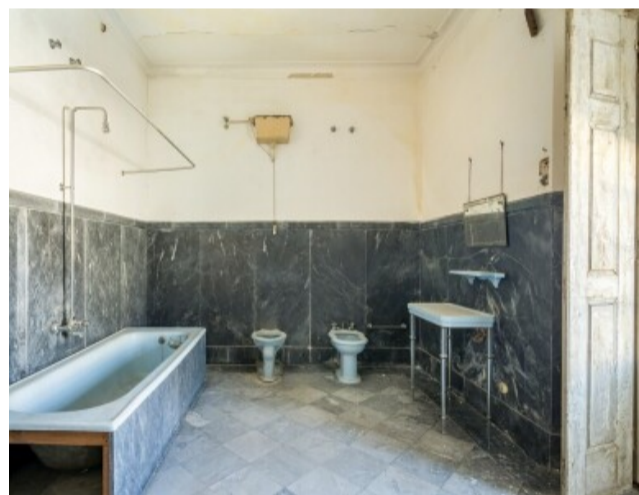
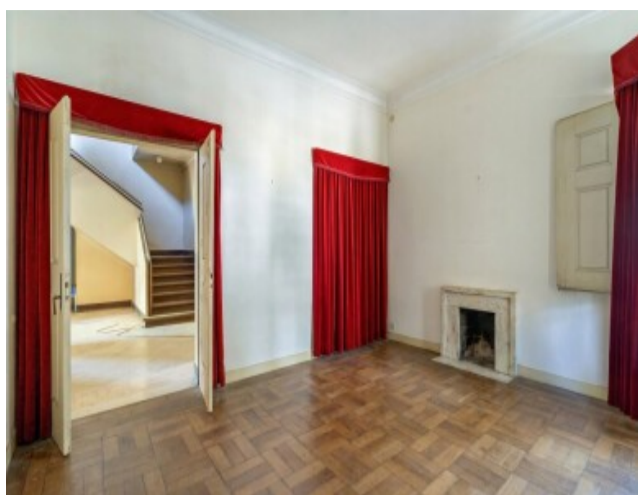
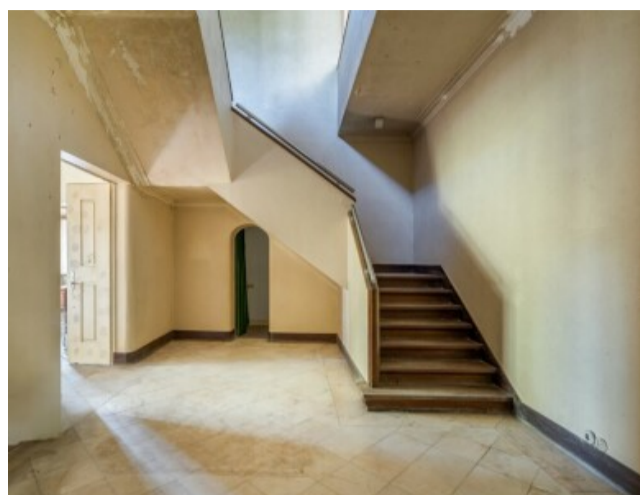
The outdoor areas feature garden zones, a well, a stone water tank, fruit trees, and an annex with a 30 m² carport with capacity for 2 vehicles.

Excellent opportunity for single-family or multi-family residence, with potential for conversion into a boutique hotel or service space for cultural and corporate events.

Located in Évora, in the privileged Horta das Figueiras area adjacent to the historic centre, with excellent provision of services, commerce, restaurants, education, healthcare, culture, and hotel units in the surrounding area. 5 minutes walking distance from the Railway Station, the Public Garden, and the Roman Temple. 10 minutes walking distance from Praça do Giraldo, the Cathedral, the Chapel of Bones, the Évora Museum, and the University of Évora. 5 minutes driving distance from Espírito Santo Hospital (HESE) and Évora Plaza Shopping.

Quick access to the A6 (IP7), 40 km from Beja Airport, 1h30 from Lisbon and Humberto Delgado Airport.

Gallery



logo

Telephone: +351 213 471 603

Email: info@portugalhomes.com

Praça da Alegria 1, 3rd Floor, 1250-004 Lisboa, Portugal Licence AMI - 14414 | APEMIP 5940

Additional Details

Property Features

Balcony

Fireplace

Alarm

logo

Telephone: +351 213 471 603

Email: info@portugalhomes.com

Praça da Alegria 1, 3rd Floor, 1250-004 Lisboa, Portugal Licence AMI - 14414 | APEMIP 5940

Site Floorplan

Telephone: +351 213 471 603

Email: info@portugalhomes.com

Praça da Alegria 1, 3rd Floor, 1250-004 Lisboa, Portugal Licence AMI - 14414 | APEMIP 5940

logo