



€975,000

Ref: JL-96083

4-bedroom apartment, with 151 sqm of gross private area, featuring an enclosed balcony and two parking spaces, between Campo de Ourique and Basílica da Estrela, in Lisbon. The apart...

- Lift
- Balcony
- Garage

Telephone: +351 213 471 603
Email: info@portugalhomes.com

Praça da Alegria 1, 3rd Floor, 1250-004 Lisboa, Portugal Licence AMI - 14414 | APEMIP 5940

Property Description

4-bedroom apartment, with 151 sqm of gross private area, featuring an enclosed balcony and two parking spaces, between Campo de Ourique and Basílica da Estrela, in Lisbon.

The apartment, requiring modernization works, comprises four bedrooms, two with access to the balcony, living room, dining room, pantry, and basement storage.

Located in a building with two elevators. 2 minutes walking distance from Basílica da Estrela and Jardim da Estrela, 1 minute from Campo de Ourique (shops, restaurants, market, Pingo Doce, Aldi and Minipreço supermarkets, groceries, banks, pharmacies, bookstore, and the renowned Redbridge School).

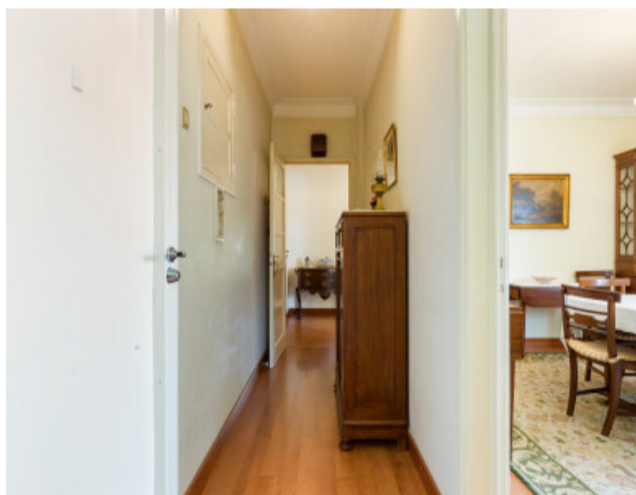
It is also 5 minutes walking distance from Liceu Pedro Nunes and Escola João de Deus, and 15 minutes from Amoreiras.

Served by several public transport options, including the famous tram 28.

This apartment is also 5 minutes driving distance from Lapa, Bairro Alto, Chiado, and access to the A2 motorway and 25 de Abril Bridge. 20 minutes from Humberto Delgado Airport.

It is also located 15 minutes walking distance from ISEG and next to IADE, 15 minutes from Universidade Autónoma de Lisboa, 5 minutes from Lycée Français Charles Lepierre, Salesianos de Lisboa, and several public schools.

Gallery



logo

Telephone: +351 213 471 603

Email: info@portugalhomes.com

Praça da Alegria 1, 3rd Floor, 1250-004 Lisboa, Portugal Licence AMI - 14414 | APEMIP 5940

Additional Details

Property Features

Lift

Balcony

Garage

logo

Telephone: +351 213 471 603

Email: info@portugalhomes.com

Praça da Alegria 1, 3rd Floor, 1250-004 Lisboa, Portugal Licence AMI - 14414 | APEMIP 5940

Site Floorplan

