



**€975,000**

Ref: JL-96043

Rural estate comprising 33 hectares, located less than 10 minutes from Alcácer do Sal, composed of three adjoining properties, entirely set within a grove of centuries-old cork oak...

Telephone: +351 213 471 603

Email: [info@portugalhomes.com](mailto:info@portugalhomes.com)

Praça da Alegria 1, 3rd Floor, 1250-004 Lisboa, Portugal Licence AMI - 14414 | APEMIP 5940

## Property Description

Rural estate comprising 33 hectares, located less than 10 minutes from Alcácer do Sal, composed of three adjoining properties, entirely set within a grove of centuries-old cork oak trees that create an environment of absolute tranquillity.

Situated on a privileged plateau, it offers extraordinary views over the Sado Valley and stunning sunsets.

This estate combines the best of both worlds: the peace of the countryside with all essential amenities.

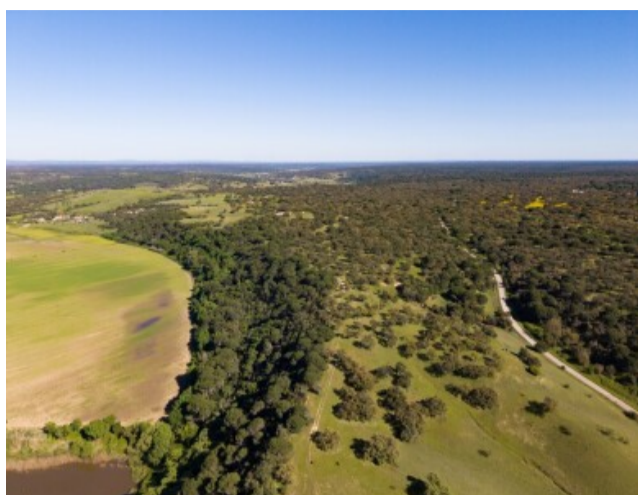
It presents excellent development potential, allowing for private residential construction up to 500m<sup>2</sup> or rural tourism projects up to 4,000m<sup>2</sup>, ideal for those looking to invest in one of Portugal's most sought-after regions.

The property is strategically positioned in an area that preserves the authentic Alentejo identity, surrounded by villages where tradition remains alive through traditional gastronomy and craftsmanship.

With excellent accessibility, it is 15 minutes from Grândola and just 25 km from the wonderful beaches of Comporta.

In the vicinity, all essential amenities can be found, including large retail centres, pharmacies, medical centre, police station, post office, schools and taxi services, ensuring comfort and convenience in daily life.

## Gallery



## Additional Details

Telephone: +351 213 471 603

Email: [info@portugalhomes.com](mailto:info@portugalhomes.com)

Praça da Alegria 1, 3rd Floor, 1250-004 Lisboa, Portugal Licence AMI - 14414 | APEMIP 5940

logo

## Site Floorplan

logo

Telephone: +351 213 471 603

Email: [info@portugalhomes.com](mailto:info@portugalhomes.com)

Praça da Alegria 1, 3rd Floor, 1250-004 Lisboa, Portugal Licence AMI - 14414 | APEMIP 5940