



€1,995,000

Ref: JL-96824

166 sqm

3-bedroom semi-detached villa, with 540 sqm of gross construction area, garden, heated saltwater pool, river and sea view, set on a 769 sqm plot in the private condominium Quinta M...

- A/C
- Alarm
- Dishwasher
- Equipped Kitchen
- Outdoor Parking
- Electric Blinds
- Garden
- Video Intercom
- Oven

Telephone: +351 213 471 603
Email: info@portugalhomes.com

Praça da Alegria 1, 3rd Floor, 1250-004 Lisboa, Portugal Licence AMI - 14414 | APEMIP 5940

Property Description

3-bedroom semi-detached villa, with 540 sqm of gross construction area, garden, heated saltwater pool, river and sea view, set on a 769 sqm plot in the private condominium Quinta Marques Gomes, in Canidelo, Vila Nova de Gaia, Porto.

The property, overlooking the Douro Estuary, Afurada Marina, and Porto, is spread over three floors.

The first floor includes a spacious garage for four cars, a full bathroom that serves the pool, technical areas, and storage.

On the second floor, social area with a 42 sqm common room and open plan kitchen, equipped with Siemens appliances, laundry, and access to the south-facing private garden, and guest bathroom.

This floor has direct access to the deck and 584 sqm garden where the infinity, heated saltwater pool is located, with unobstructed river and sea views.

On the third floor, three en-suite bedrooms facing west with access to a common balcony, with the master suite having a large terrace with unobstructed river views.

Possibility of installing an elevator.

Highlights include high-quality materials and finishes, such as old pine flooring, technological equipment for energy efficiency and comfort, including solar panels, heat pump, air conditioning, semi-hidden frames with double glazing and solar control, LED lighting, home automation, and security systems.

This is one of the most privileged locations to live in Vila Nova de Gaia, on the riverfront, next to the Douro that connects to the sea.

Overlooking the Douro River mouth, with 270,000 sqm, it is a gated residential condominium, composed of extensive green areas where the highest standards of quality and environmental sustainability are ensured.

Carefully developed to take maximum advantage of the natural morphology of the land.

A perfect amphitheater that extends from the top of the mansion to the banks of the Douro River, providing its residents with unparalleled unobstructed views.

In a true ecosystem due to its location, the nature reserve and extensive green areas invite sports and leisure activities in the constant presence of views over Porto and the Douro River.

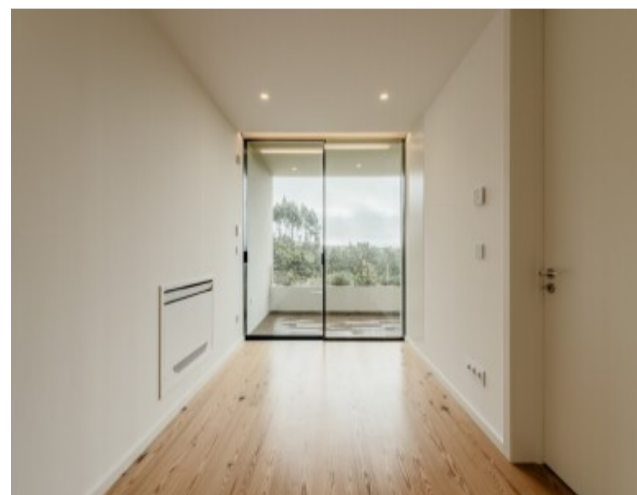
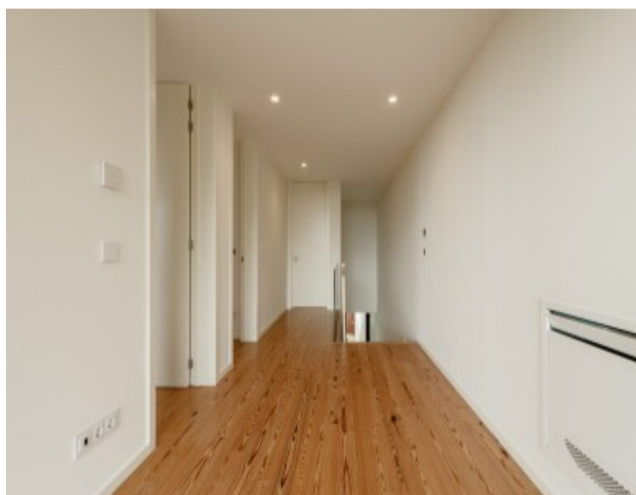
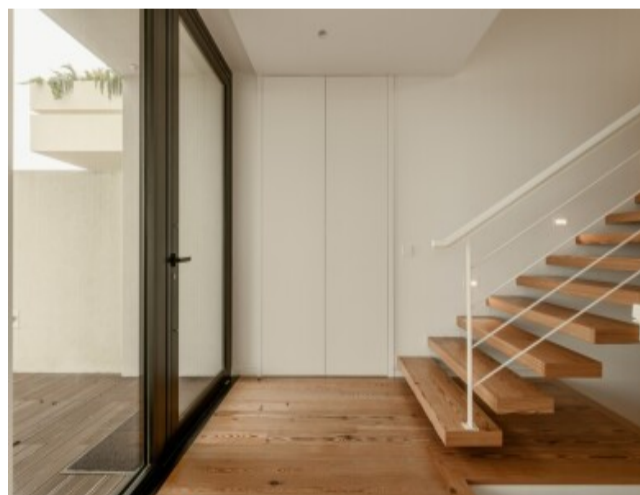
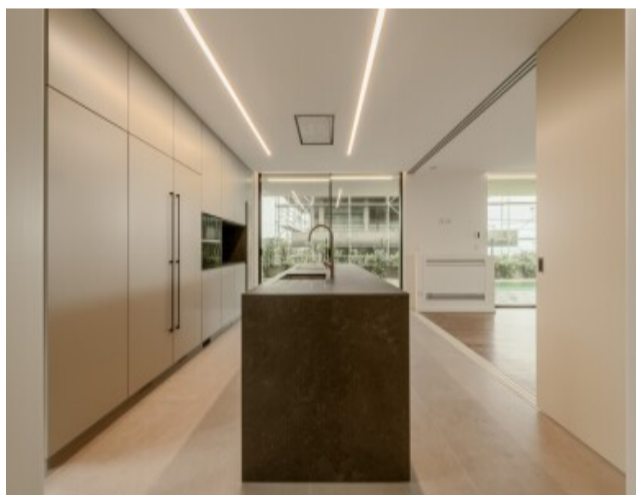
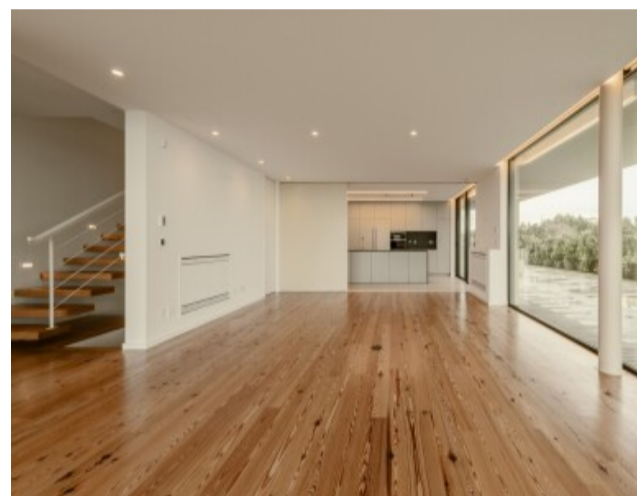
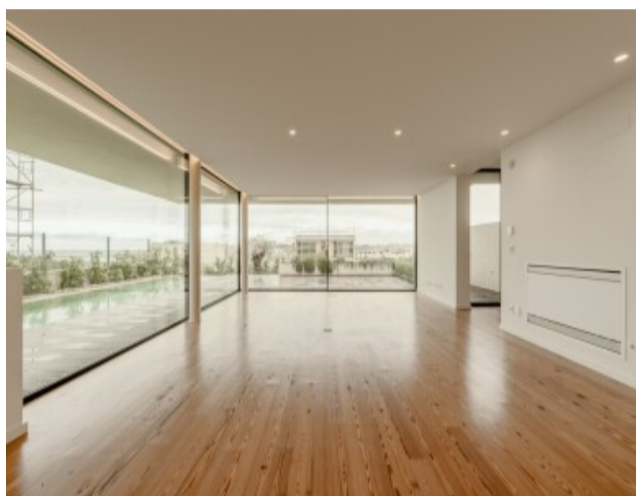
On the riverbank, Douro Marina is an extension of the outdoor amenities offered in this place.

The villa is less than 5 minutes walking distance from Vila Nova de Gaia's riverfront, Afurada Marina, the playground, the riverfront bike path, and 10 minutes from the Douro Estuary Local Nature Reserve.

It is also 5 minutes driving distance from Vila Nova de Gaia Beaches, 16 minutes from Miramar Golf Club, 20 minutes from Espinho and Porto's downtown, 25 minutes from Porto Airport, and 3 hours from Lisbon.

logo

Gallery



logo

Telephone: +351 213 471 603

Email: info@portugalhomes.com

Praça da Alegria 1, 3rd Floor, 1250-004 Lisboa, Portugal Licence AMI - 14414 | APEMIP 5940

Additional Details

Property Features

A/C	Equipped Kitchen	Garden
Alarm	Outdoor Parking	Video Intercom
Dishwasher	Electric Blinds	Oven
Washing Machine	Sea View	River View

logo

Telephone: +351 213 471 603

Email: info@portugalhomes.com

Praça da Alegria 1, 3rd Floor, 1250-004 Lisboa, Portugal Licence AMI - 14414 | APEMIP 5940

Site Floorplan

