



€2,850,000

Ref: PP176349

161 sqm

This brand-new contemporary residence is set within a peaceful and established residential enclave of Vilamoura, just minutes from the marina, beaches, golf courses and everyday amenities. Designed with...

• Pool

• A/C

• Garden

Telephone: +351 213 471 603
Email: info@portugalhomes.com

Praça da Alegria 1, 3rd Floor, 1250-004 Lisboa, Portugal Licence AMI - 14414 | APEMIP 5940

logo not

Property Description

This brand-new contemporary residence is set within a peaceful and established residential enclave of Vilamoura, just minutes from the marina, beaches, golf courses and everyday amenities. Designed with clean architectural lines and a practical layout, the villa offers a rare combination of elegance, efficiency and low-maintenance living, ideal as a primary residence, refined holiday home or investment asset.

The property has been carefully conceived to maximise comfort, natural light and effortless indoor-outdoor living. On the ground floor are three generous en suite bedrooms, including an impressive principal suite. Each room enjoys direct views over the landscaped garden and swimming pool, with large openings that create a seamless connection between the interior and exterior spaces.

The main living areas are bright, open and welcoming, benefiting from excellent sun exposure throughout the day. The flow between lounge, dining and outdoor terraces creates an easy lifestyle suited to both family living and entertaining.

Outside, the villa features a private garden with swimming pool, sunbathing areas and a discreet barbecue terrace positioned beside the kitchen, perfectly arranged for relaxed al fresco dining with family and guests. A substantial rooftop terrace adds a further leisure space, ideal for sunset drinks, lounging or enjoying the surrounding views.

The spacious lower ground floor includes secure parking for multiple vehicles, storage areas and a guest WC, offering practicality rarely found in homes of this scale.

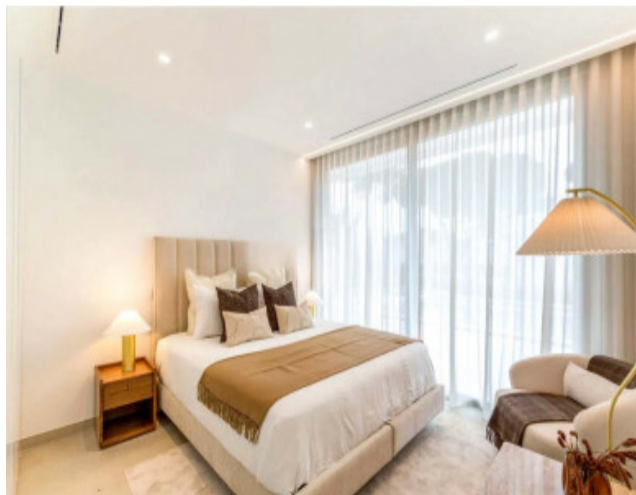
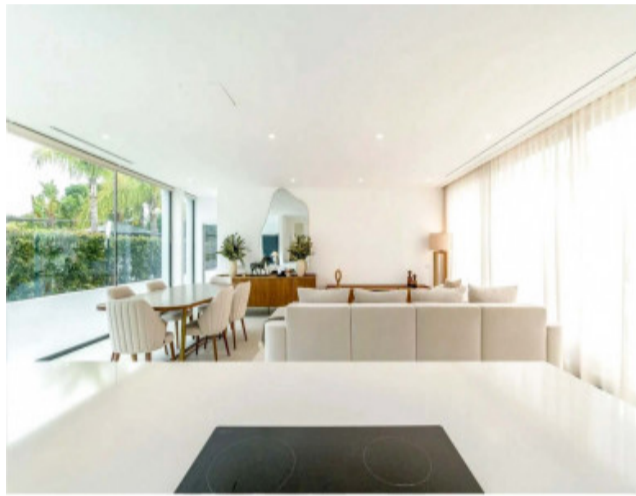
Positioned in one of the Algarve's most prestigious destinations, the villa enjoys access to Vilamoura's outstanding lifestyle infrastructure, including championship golf courses, an award-winning marina, beaches, healthcare and international schooling. Vilamoura remains one of southern Europe's most established luxury destinations, known for security, planning quality and long-term desirability.

Approximate driving times:

- Vilamoura Marina: 5 minutes
- Shops, restaurants and daily services: 5 minutes
- Vilamoura Tennis & Padel Academy: 5 minutes
- Private clinics and Lusíadas Hospital Vilamoura: 5 minutes
- Praia da Falésia: 10 minutes
- Vilamoura International School: 15 minutes
- Vilamoura Equestrian Centre: 15 minutes
- Faro International Airport: 35 minutes
- Lisbon via A2 motorway: 2 hours 30 minutes

logo

Gallery



logo

Telephone: +351 213 471 603

Email: info@portugalhomes.com

Praça da Alegria 1, 3rd Floor, 1250-004 Lisboa, Portugal Licence AMI - 14414 | APEMIP 5940

Additional Details

Attributes

Status Available	Net Area 161sq m	Gross Area 161sq m
Year Built 2025		

Property Features

Pool	A/C	Garden
------	-----	--------

logo

Telephone: +351 213 471 603

Email: info@portugalhomes.com

Praça da Alegria 1, 3rd Floor, 1250-004 Lisboa, Portugal Licence AMI - 14414 | APEMIP 5940

Site Floorplan

logo

Telephone: +351 213 471 603

Email: info@portugalhomes.com

Praça da Alegria 1, 3rd Floor, 1250-004 Lisboa, Portugal Licence AMI - 14414 | APEMIP 5940