

€4,500,000

Ref: PP176347

559 sqm

Set within the prestigious Pinhal Velho estate, one of Vilamoura's most exclusive residential addresses, this exceptional golf-front villa occupies a private 4,100 m<sup>2</sup> plot with uninterrupted...

• Pool

• A/C

• Garden

Telephone: +351 213 471 603

Email: [info@portugalhomes.com](mailto:info@portugalhomes.com)

Praça da Alegria 1, 3rd Floor, 1250-004 Lisboa, Portugal Licence AMI - 14414 | APEMIP 5940

logo not

## Property Description

Set within the prestigious Pinhal Velho estate, one of Vilamoura's most exclusive residential addresses, this exceptional golf-front villa occupies a private 4,100 m<sup>2</sup> plot with uninterrupted views across the fairways. South-facing, impeccably maintained and built to exacting standards, the property combines scale, privacy and timeless quality in one of the Algarve's most sought-after settings.

Surrounded by mature landscaped gardens, the exterior has been designed for year-round outdoor living. A large swimming pool with jacuzzi enjoys full sun exposure and open golf views, while expansive terraces, a BBQ area, ornamental lake and generous lounging spaces create an ideal setting for entertaining family and guests in complete privacy.

Internally, the villa is defined by natural light, generous proportions and refined finishes. Marble bathrooms, stained glass detailing, bespoke wood cabinetry and extensive glazing elevate the sense of quality throughout. The principal living area is spacious and open, seamlessly connecting the lounge and dining room, complete with fireplace, air conditioning and direct access to the gardens and pool terrace.

The fully equipped kitchen offers excellent functionality, with substantial storage, a pantry and separate laundry room. A striking entrance hall with feature stained glass windows leads to a cloakroom and a versatile adjoining room suited to a home office, media room or additional reception space.

Accommodation is arranged across multiple levels and offers flexibility for both family living and guest hosting. The main floor comprises five bedrooms, three with private en suite bathrooms, many enjoying direct garden access and golf course views. All bedrooms feature built-in wooden wardrobes.

The lower ground floor benefits from natural light and provides substantial additional living space, including a large games or leisure room, fully equipped gym, three further en suite bedrooms, and a sizeable room ideal for conversion into a cinema, wellness suite, wine cellar or further storage.

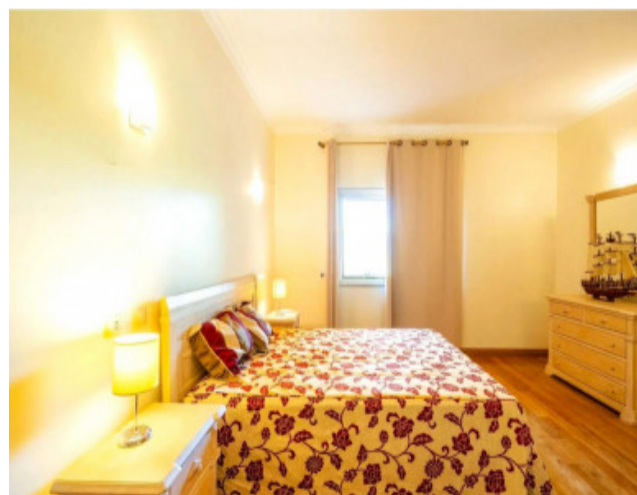
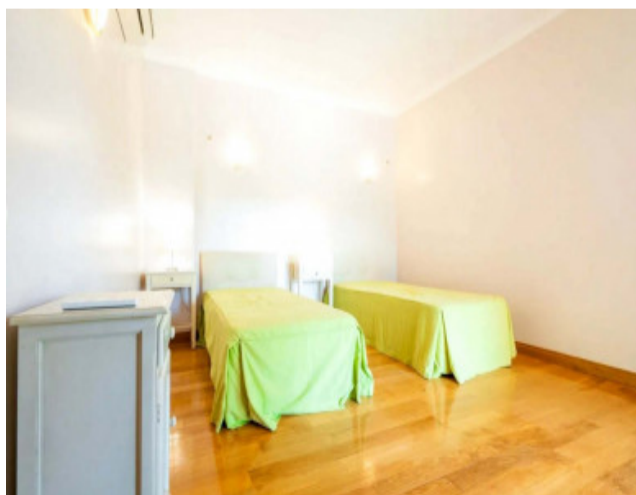
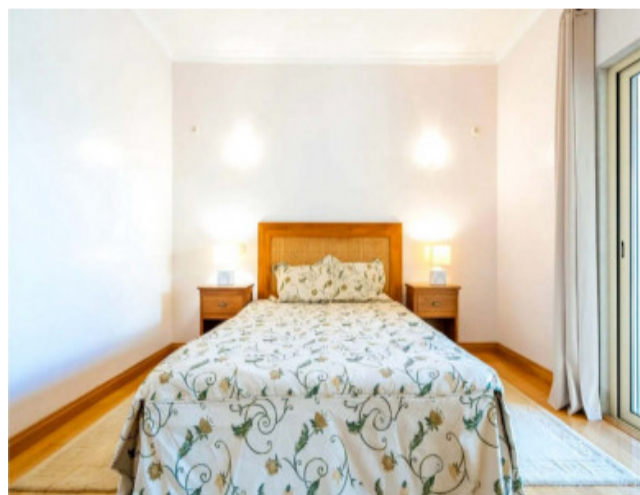
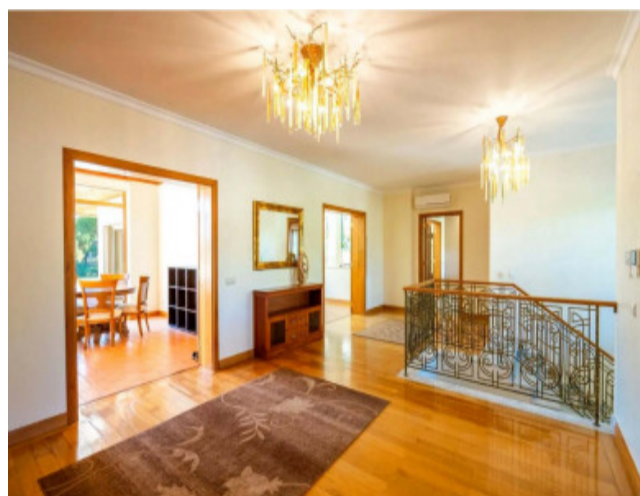
A rooftop terrace crowns the property, offering panoramic views over the surrounding golf courses and gardens.

Additional features include air conditioning throughout, alarm system, automatic gates, a two-car carport and extensive internal parking for visiting guests.

Positioned just minutes from Vilamoura Marina, Falésia Beach, leading golf courses, the International School of Vilamoura, restaurants and essential services, and only 20 minutes from Faro International Airport, this is a rare opportunity to acquire a substantial luxury residence in a fully established and irreplaceable prime location.

A standout private estate offering scale, outlook and enduring value in the heart of Vilamoura.

# Gallery



logo

Telephone: +351 213 471 603

Email: [info@portugalhomes.com](mailto:info@portugalhomes.com)

Praça da Alegria 1, 3rd Floor, 1250-004 Lisboa, Portugal Licence AMI - 14414 | APEMIP 5940

## Additional Details

### Property Features

Pool

A/C

Garden

logo

Telephone: +351 213 471 603

Email: [info@portugalhomes.com](mailto:info@portugalhomes.com)

Praça da Alegria 1, 3rd Floor, 1250-004 Lisboa, Portugal Licence AMI - 14414 | APEMIP 5940

## Site Floorplan

logo

Telephone: +351 213 471 603

Email: [info@portugalhomes.com](mailto:info@portugalhomes.com)

Praça da Alegria 1, 3rd Floor, 1250-004 Lisboa, Portugal Licence AMI - 14414 | APEMIP 5940