

# €2,783,000

Ref: JL-93017

Two-bedroom villa (T2) with 211.96 sq m of construction area, garden, swimming pool, and two parking spaces, on a plot of land with 8,036.86 sq m, in the Sublime Comporta Villas de...

- Garden
- Outdoor Parking
- River View
- Balcony
- Garage
- Gym
- Sea View

Telephone: +351 213 471 603  
Email: [info@portugalhomes.com](mailto:info@portugalhomes.com)

Praça da Alegria 1, 3rd Floor, 1250-004 Lisboa, Portugal Licence AMI - 14414 | APEMIP 5940

## Property Description

Two-bedroom villa (T2) with 211.96 sq m of construction area, garden, swimming pool, and two parking spaces, on a plot of land with 8,036.86 sq m, in the Sublime Comporta Villas development, in Comporta.

The villa is single-storey and consists of an entrance hall, shared bathroom, living room, kitchen, two suites, two storage rooms, and interior circulation spaces.

Sublime Comporta Villas is a project by the same developer as Sublime Comporta.

Sublime Comporta was a pioneering project in the Comporta region, developed on a 17-hectare plot and comprising 23 hotel rooms, 22 villas, a restaurant and bar, communal pool, spa & wellness center, gym, and padel courts, being a national reference.

Sublime Comporta Villas is a five-star Aparthotel with 200 beds, developed on a 51-hectare plot, and features several common areas, including an events building, plaza building, wellness building, staff buildings, sports complex, gatehouse and support building for fields, equestrian center, two water mirrors, two indoor pools, as well as a complete range of leisure facilities such as a football pitch, riding arena, tennis and padel courts, and 43 villas with outdoor pools (accommodation units), of which 29 are two-bedroom and 14 are three-bedroom units.

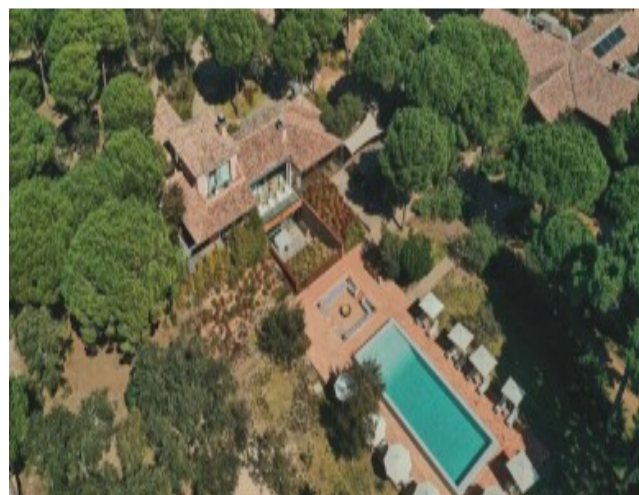
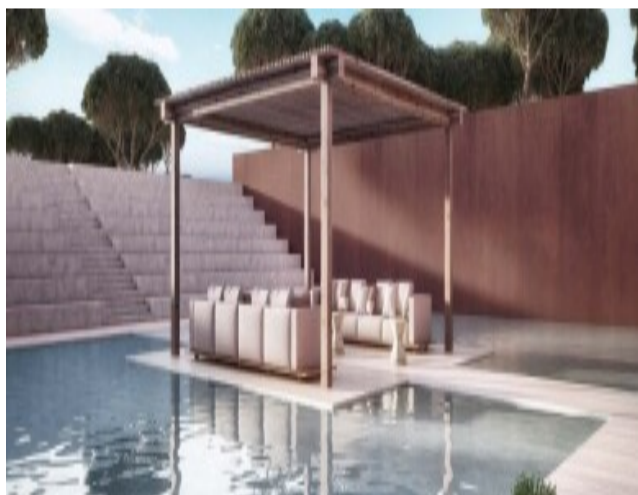
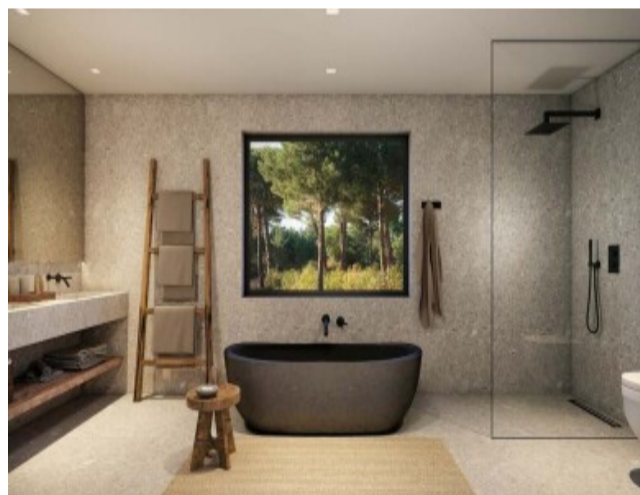
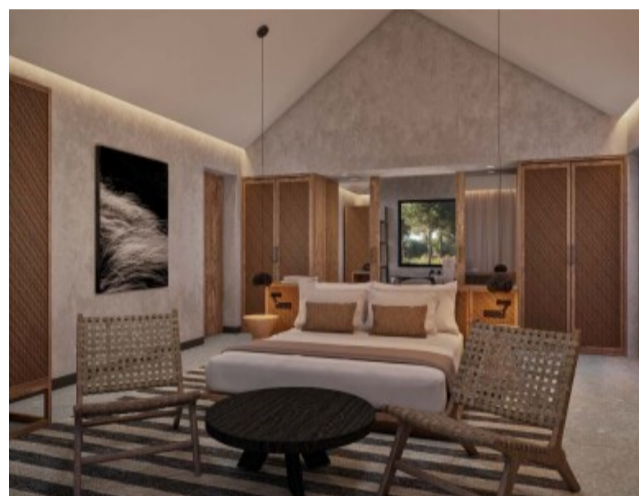
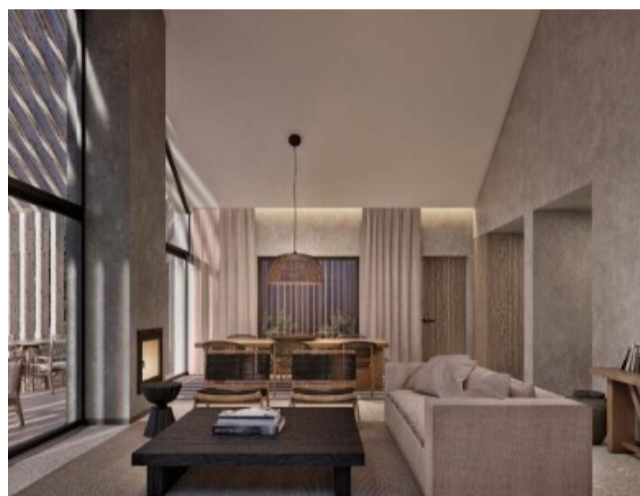
The building permit was issued in September 2021, and the project is under construction with completion scheduled for June 2025.

The future owner of the villa may assign the unit to tourist operation, participating with 50% of the operating income, after taxes and commissions, from the rental pool of units of the same type, which will be due at the end of each quarter of each calendar year.

It is located 5 minutes' drive from Carvalhal centre, 7 minutes from Pêgo beach and Carvalhal beach, 7 minutes from Terras da Comporta Golf Course, 10 minutes from Comporta village and 15 minutes from Comporta beach.

It is 15 minutes from Grândola, 30 minutes from Alcácer do Sal, and 1 hour 30 minutes from Lisbon and Lisbon Airport.

# Gallery



logo

Telephone: +351 213 471 603

Email: [info@portugalhomes.com](mailto:info@portugalhomes.com)

Praça da Alegria 1, 3rd Floor, 1250-004 Lisboa, Portugal Licence AMI - 14414 | APEMIP 5940

## Additional Details

### Property Features

Garden	Balcony	Gym
Outdoor Parking	Garage	Sea View
River View		

logo

Telephone: +351 213 471 603

Email: [info@portugalhomes.com](mailto:info@portugalhomes.com)

Praça da Alegria 1, 3rd Floor, 1250-004 Lisboa, Portugal Licence AMI - 14414 | APEMIP 5940

## Site Floorplan

logo

Telephone: +351 213 471 603

Email: [info@portugalhomes.com](mailto:info@portugalhomes.com)

Praça da Alegria 1, 3rd Floor, 1250-004 Lisboa, Portugal Licence AMI - 14414 | APEMIP 5940