



€1,750,000

Ref: JL-96825

8-bedroom villa with 941 m² of private gross area, garden, swimming pool, and four parking spaces, set on a 1,495 m² plot of land, located in the village of Lavre, in the municipal...

- A/C
- Garden
- Balcony
- Fireplace
- Alarm
- Outdoor Parking

Telephone: +351 213 471 603
Email: info@portugalhomes.com

Praça da Alegria 1, 3rd Floor, 1250-004 Lisboa, Portugal Licence AMI - 14414 | APEMIP 5940

Property Description

8-bedroom villa with 941 m² of private gross area, garden, swimming pool, and four parking spaces, set on a 1,495 m² plot of land, located in the village of Lavre, in the municipality of Montemor-o-Novo, Alentejo.

The property comprises three autonomous units.

The main house, arranged over three levels, features six bedrooms, four of which are en suite, two living rooms, a dining room, an office, a kitchen, and two additional spaces with potential to be converted into bedrooms, living rooms, or other support areas.

It also includes a duplex villa comprising a living room, kitchen, bathroom, and two bedrooms, as well as a third unit allocated to parking, with a private gross area of 123 m².

The villa is in good condition, with the exception of some areas currently used as storage rooms.

It is equipped with fireplaces in the main living room and in the office.

The outdoor area includes a garden with swimming pool, porch, and barbecue area, benefiting from excellent sun exposure.

All rooms in the main house stand out for their high ceilings, providing a sense of spaciousness and natural light.

The property enjoys unobstructed views over the village and the surrounding Alentejo cork oak landscape.

Lavre is a typical Alentejo village, with around 500 inhabitants, known for the eco-educational park Monte Selvagem .

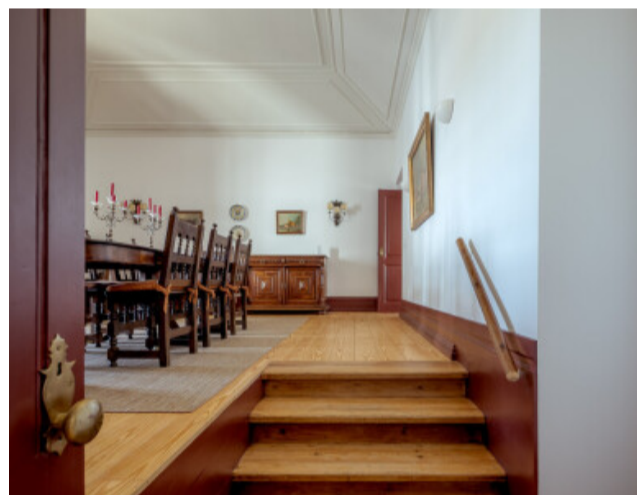
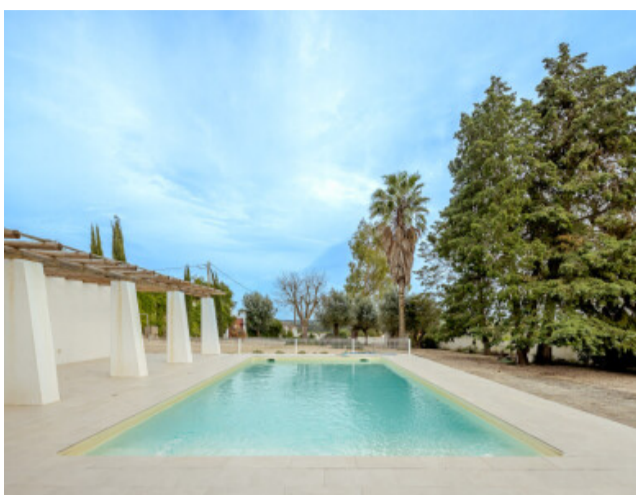
It preserves local traditions, offering an authentic rural atmosphere, popular festivities, and good support infrastructures, including restaurants, a supermarket, and a bakery with a wood-fired oven.

It is located approximately 100 km from Lisbon, around 1 hour driving distance, 17 km from Montemor-o-Novo, a town recognized for its cultural dynamism, gastronomy, municipal market, and castle, with access to the A6 motorway.

It is also 15 km from Vendas Novas, with a railway station connecting to Oriente and Santa Apolónia stations and access to the A6, and 26 km from the town of Coruche.

Humberto Delgado International Airport is approximately 1 hour away.

Gallery



logo

Telephone: +351 213 471 603

Email: info@portugalhomes.com

Praça da Alegria 1, 3rd Floor, 1250-004 Lisboa, Portugal Licence AMI - 14414 | APEMIP 5940

Additional Details

Property Features

A/C	Garden	Balcony
Fireplace	Alarm	Outdoor Parking

logo

Telephone: +351 213 471 603

Email: info@portugalhomes.com

Praça da Alegria 1, 3rd Floor, 1250-004 Lisboa, Portugal Licence AMI - 14414 | APEMIP 5940

Site Floorplan

