



€630,000

Ref: JL-96579

1 bedroom apartment with 83 sqm of gross private area, a private garden of 137 sqm and one parking space, in the Villa Infancia condominium, in Estrela, Lisbon. The apartment comprises...

- A/C
- Gym
- Washing Machine
- Lift
- Dishwasher
- Train
- Garden
- Oven

Telephone: +351 213 471 603
Email: info@portugalhomes.com

Praça da Alegria 1, 3rd Floor, 1250-004 Lisboa, Portugal Licence AMI - 14414 | APEMIP 5940

Property Description

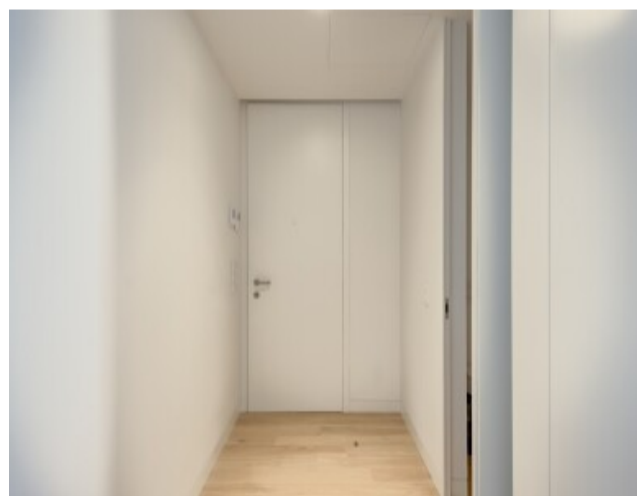
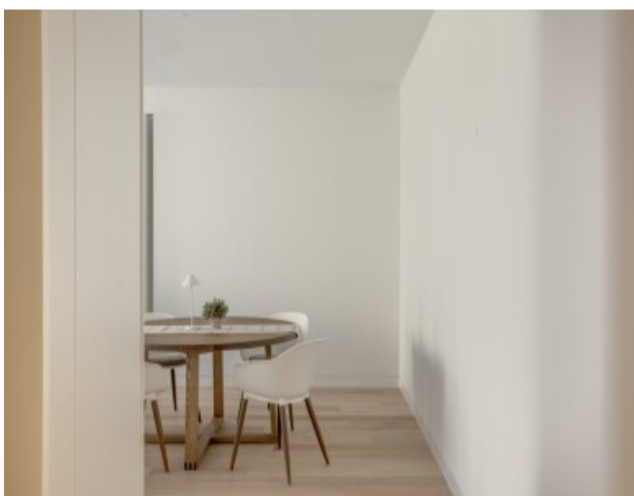
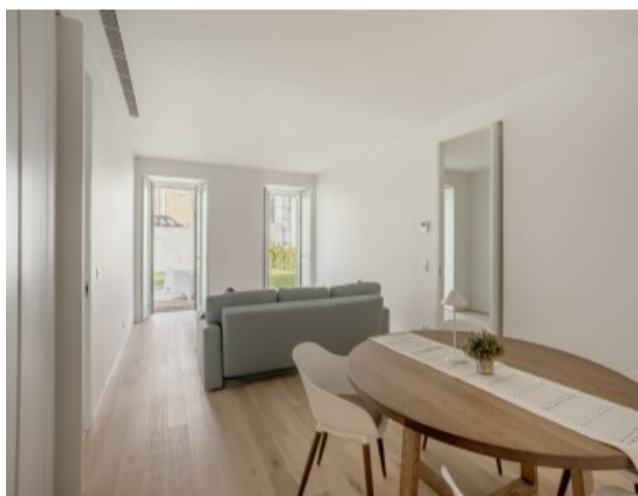
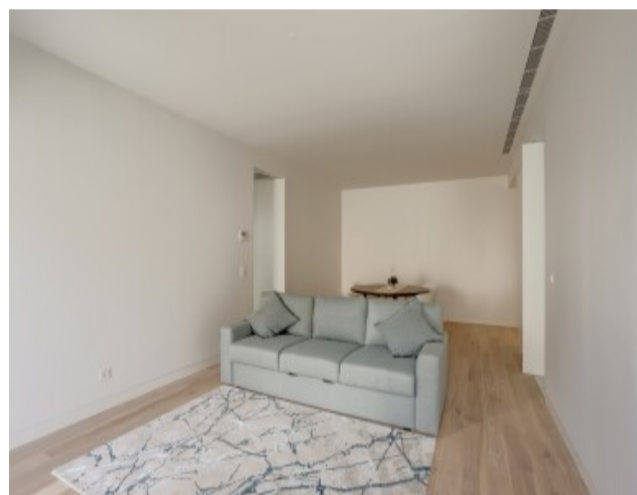
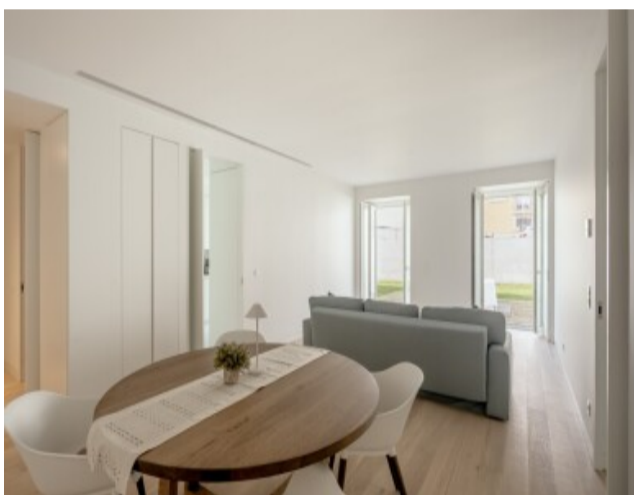
1 bedroom apartment with 83sqm of gross private area, a private garden of 137sqm and one parking space, in the Villa Infante condominium, in Estrela, Lisbon.

The apartment comprises a living room with access to the garden, a separate kitchen, one en-suite bedroom and one bathroom.

Villa Infante is a private neoclassical condominium, resulting from the combination of the restoration of the existing structure with the construction of new residential buildings.

Located just a few minutes' walking distance from the Tagus River, 5 minutes from Tapada and Palácio das Necessidades, 10 minutes from the Alcântara Riverside area, CUF Tejo Hospital, the National Museum of Ancient Art, the future Infante Santo metro station, and 15 minutes from Salesianos de Lisboa.

It is also 10 minutes' driving distance from Egas Moniz Hospital, Redbridge International School, the Estrela Basilica and Jardim da Estrela, and 20 minutes from Humberto Delgado Airport.



logo

Telephone: +351 213 471 603

Email: info@portugalhomes.com

Praça da Alegria 1, 3rd Floor, 1250-004 Lisboa, Portugal Licence AMI - 14414 | APEMIP 5940

Additional Details

Property Features

A/C	Lift	Garden
Gym	Dishwasher	Oven
Washing Machine	Train	

logo

Telephone: +351 213 471 603

Email: info@portugalhomes.com

Praça da Alegria 1, 3rd Floor, 1250-004 Lisboa, Portugal Licence AMI - 14414 | APEMIP 5940

Site Floorplan

