



€990,000

Ref: DL37211

94 sqm

3 bedroom villa in Comporta, new, with 95m² of private area, set in a plot of 221m², consisting of four main rooms, priv...

Telephone: +351 213 471 603
Email: info@portugalhomes.com

Praça da Alegria 1, 3rd Floor, 1250-004 Lisboa, Portugal Licence AMI - 14414 | APEMIP 5940

Property Description

3 bedroom villa in Comporta, new, with 95m² of private area, set in a plot of 221m², consisting of four main rooms, private garden and outdoor wooden deck.

This property, located in the Pestana Comporta Development, stands out for its contemporary design combined with the traditional architecture of the region, being fully furnished and equipped, including air conditioning.

The villa is spread over a main block where there is a large living and dining room in open space with the kitchen, promoting natural light and fluidity between the environments. It also has a pantry and a suite, providing comfort and privacy.

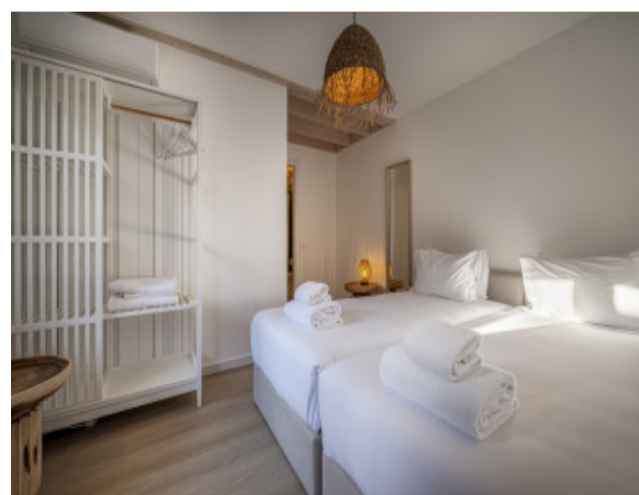
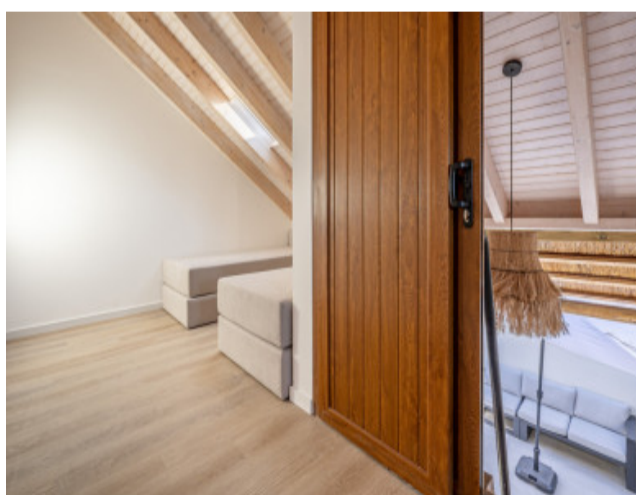
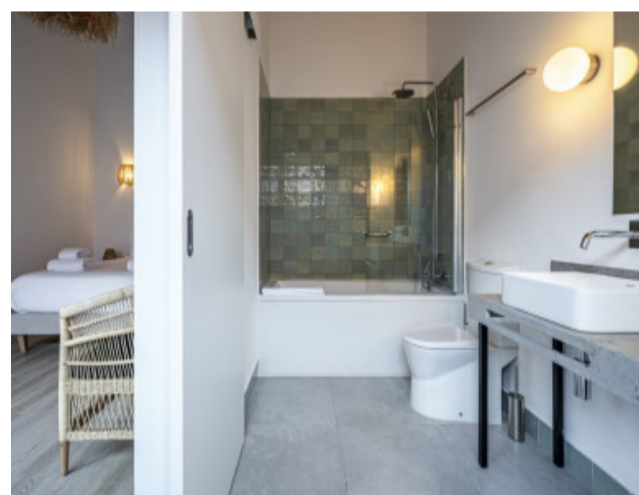
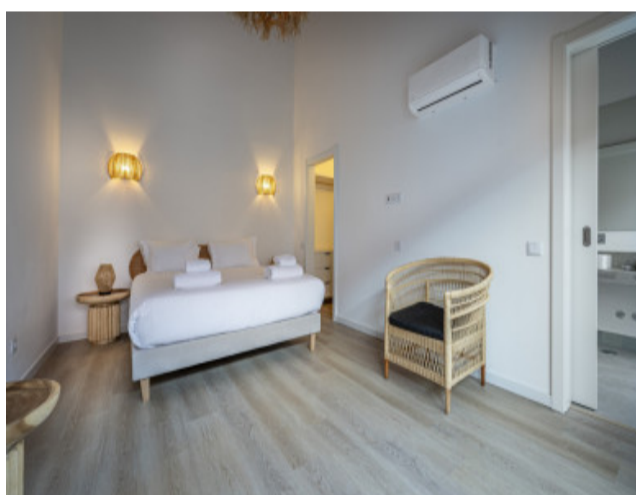
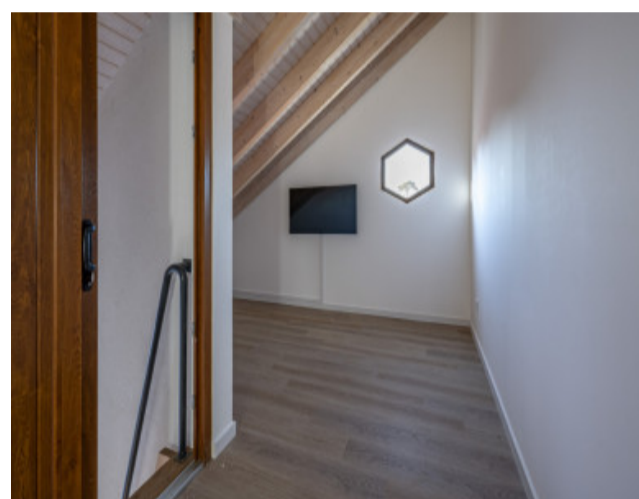
Through independent access from the outside, it has another bedroom with a bunk bed, an additional bathroom, a master suite with closet and bathtub, and a multifunctional mezzanine, ideal for an office, games room or extra bedroom, ensuring flexibility in the use of spaces.

Outside, the property offers a leisure area with a wooden deck, outdoor dining spaces, a garden with native plants and a traditional masonry tank, promoting an environment of tranquillity and connection to nature.

Located in the centre of Comporta, the Pestana Comporta development benefits from a gym, reception and 75 independent villas, being within walking distance of shops, services, restaurants and public transport. In a few minutes by car, you can access Praia da Comporta, Carvalhal, Alcácer and Lisbon.

The surroundings are marked by safety, green areas and proximity to points of tourist interest, making this villa a distinct option to enjoy the best of Comporta.

Gallery



logo

Telephone: +351 213 471 603

Email: info@portugalhomes.com

Praça da Alegria 1, 3rd Floor, 1250-004 Lisboa, Portugal Licence AMI - 14414 | APEMIP 5940

Additional Details

Telephone: +351 213 471 603

Email: info@portugalhomes.com

Praça da Alegria 1, 3rd Floor, 1250-004 Lisboa, Portugal Licence AMI - 14414 | APEMIP 5940

logo

Site Floorplan

Telephone: +351 213 471 603

Email: info@portugalhomes.com

Praça da Alegria 1, 3rd Floor, 1250-004 Lisboa, Portugal Licence AMI - 14414 | APEMIP 5940

logo