



# €1,950,000

Ref: JL-95967

2-bedroom duplex apartment with 162 m<sup>2</sup> of private gross area, balcony, 106 m<sup>2</sup> garden and swimming pool, south-facing, located in Lapa, Lisbon. The apartment comprises, on the lower...

- A/C
- Balcony
- Electric Blinds
- Washing Machine
- Lift
- Gym
- Fridge
- River View
- Garden
- Dishwasher
- Oven

Telephone: +351 213 471 603  
Email: info@portugalhomes.com

Praça da Alegria 1, 3rd Floor, 1250-004 Lisboa, Portugal Licence AMI - 14414 | APEMIP 5940

## Property Description

2-bedroom duplex apartment with 162 m<sup>2</sup> of private gross area, balcony, 106 m<sup>2</sup> garden and swimming pool, south-facing, located in Lapa, Lisbon.

The apartment comprises, on the lower floor, a spacious south-facing living room that extends into the garden with swimming pool.

The kitchen, equipped with Miele appliances, is harmoniously integrated into the social area, between the living room and the dining room.

This floor also includes an office, a guest bathroom, and a pantry.

On the upper floor, there are two generously sized en suite bedrooms, with access to the balcony and river views.

The elevator provides direct access to both floors of the apartment.

Designed by architect Falcão de Campos, the apartment features kitchens equipped with Miele appliances, bathrooms clad in tiles, DURAVIT wall-hung sanitary ware, LUSSO STONE taps, and ANTRAX towel warmers.

All rooms are equipped with air conditioning and underfloor heating.

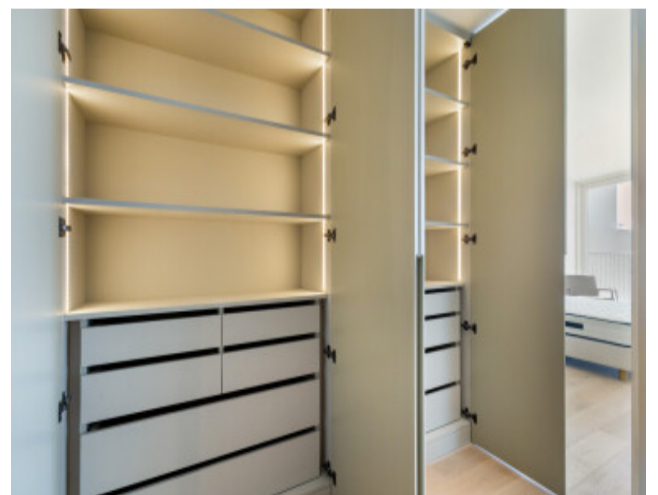
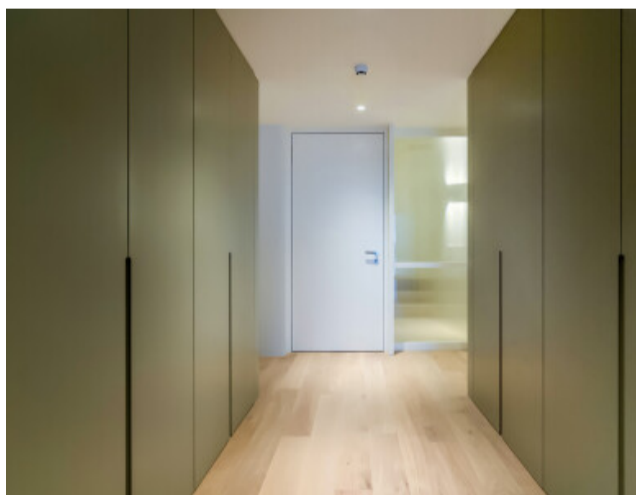
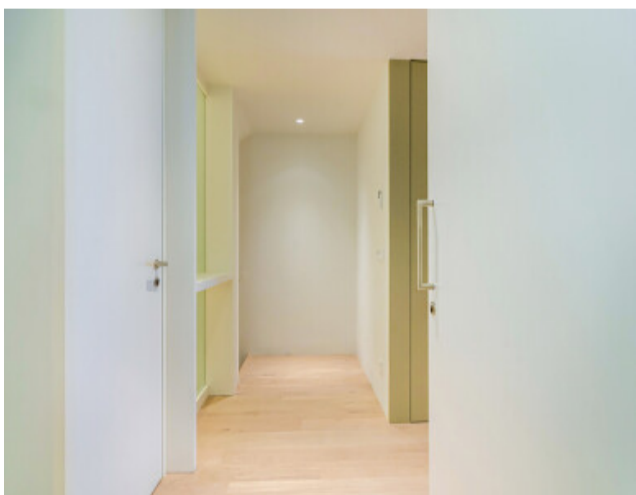
The flooring in the kitchen and bathrooms is microcement, while the living rooms, suites, circulation areas, and staircases feature oak wood flooring.

Lapa is a prime and residential neighborhood of Lisbon, known for its aristocratic atmosphere, palaces, and embassies, offering unique views over the Tagus River.

It is an ideal area to live due to its tranquility and proximity to Jardim da Estrela and the Estrela Basilica, making it an elegant and prestigious retreat.

It is located 15 minutes walking distance from Príncipe Real and 10 minutes from Santos, Santos train station, Jardim da Estrela, and the future Santos and Estrela metro stations.

# Gallery



logo

Telephone: +351 213 471 603

Email: [info@portugalhomes.com](mailto:info@portugalhomes.com)

Praça da Alegria 1, 3rd Floor, 1250-004 Lisboa, Portugal Licence AMI - 14414 | APEMIP 5940

## Additional Details

### Property Features

A/C	Lift	Garden
Balcony	Gym	Dishwasher
Electric Blinds	Fridge	Oven
Washing Machine	River View	

logo

Telephone: +351 213 471 603

Email: [info@portugalhomes.com](mailto:info@portugalhomes.com)

Praça da Alegria 1, 3rd Floor, 1250-004 Lisboa, Portugal Licence AMI - 14414 | APEMIP 5940

## Site Floorplan

