



€499,000

Ref: JL-96380

2-bedroom apartment with 78sqm of total private area, terrace, sea view and two parking spaces, in the Harbour View condominium, in Sesimbra. The apartment comprises a living room,...

- A/C
- Balcony
- Sea View
- Lift
- Gym
- Garden
- Oven

Telephone: +351 213 471 603
Email: info@portugalhomes.com

Praça da Alegria 1, 3rd Floor, 1250-004 Lisboa, Portugal Licence AMI - 14414 | APEMIP 5940

Property Description

2-bedroom apartment with 78sqm of total private area, terrace, sea view and two parking spaces, in the Harbour View condominium, in Sesimbra.

The apartment comprises a living room, equipped kitchen, two bedrooms (one of them en-suite) and one bathroom.

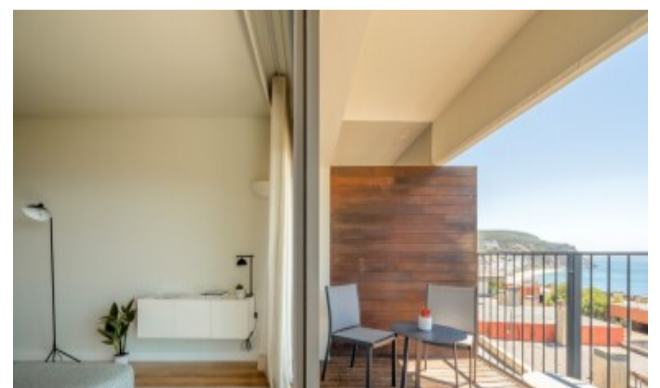
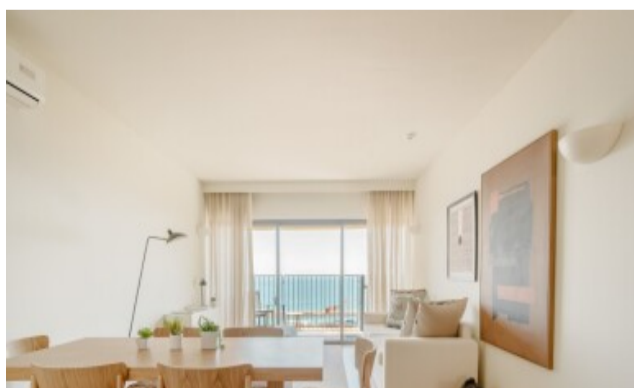
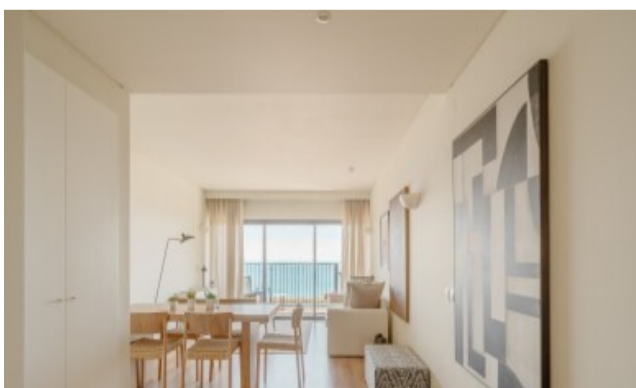
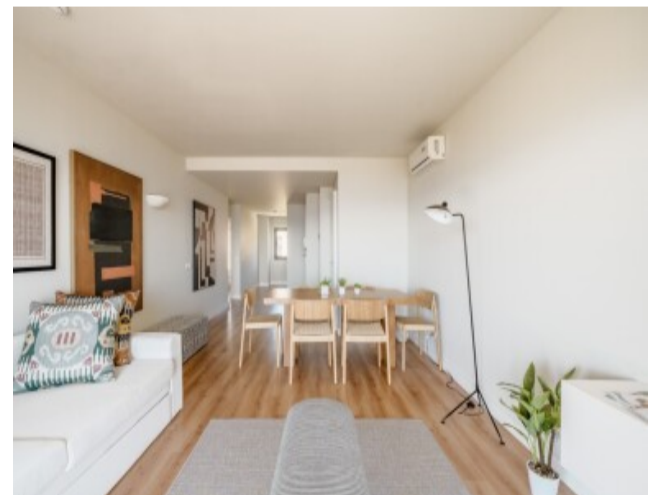
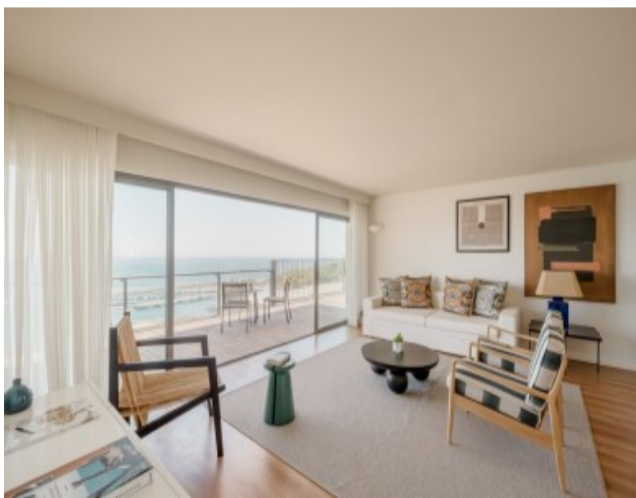
Access to the balcony is through the living room and the suite.

Harbour View stands out for its proximity to and appreciation of nature, providing all the comforts and an environment for greater connection with the natural surroundings.

It offers a wide range of services, including reception, health club, outdoor swimming pool, spacious indoor and outdoor lounge areas with panoramic sea views, garden, terraces and events room.

Located 2minutes' driving distance from Praia do Ouro and 5minutes from Sesimbra beach, 10minutes from Aldeia do Meco and Serra da Arrábida, 20minutes from Cabo Espichel, 25minutes from Portinho da Arrábida, 30minutes from Setúbal, Seixal and Almada, 35minutes from Costa da Caparica and 40minutes from Lisbon.

Harbour View is 45minutes from Humberto Delgado International Airport.



logo

Telephone: +351 213 471 603

Email: info@portugalhomes.com

Praça da Alegria 1, 3rd Floor, 1250-004 Lisboa, Portugal Licence AMI - 14414 | APEMIP 5940

Additional Details

Property Features

A/C	Lift	Garden
Balcony	Gym	Oven
Sea View		

Site Floorplan

