



**€215,000**

Ref: DL37165

111 sqm

New 2+1 bedroom flat, with 110m2, inserted in a closed condominium with swimming pool, located next to the centre of the...

Telephone: +351 213 471 603

Email: [info@portugalhomes.com](mailto:info@portugalhomes.com)

Praça da Alegria 1, 3rd Floor, 1250-004 Lisboa, Portugal Licence AMI - 14414 | APEMIP 5940

logo not

## Property Description

New 2+1 bedroom flat, with 110m<sup>2</sup>, inserted in a closed condominium with swimming pool, located next to the centre of the village and a few meters from Praia Grande, in Porto Covo.

This unit stands out for its fractional use, allowing four owners to enjoy the property for 90 days a year, in rotating periods of 15 days every two months, providing flexibility and optimisation of use.

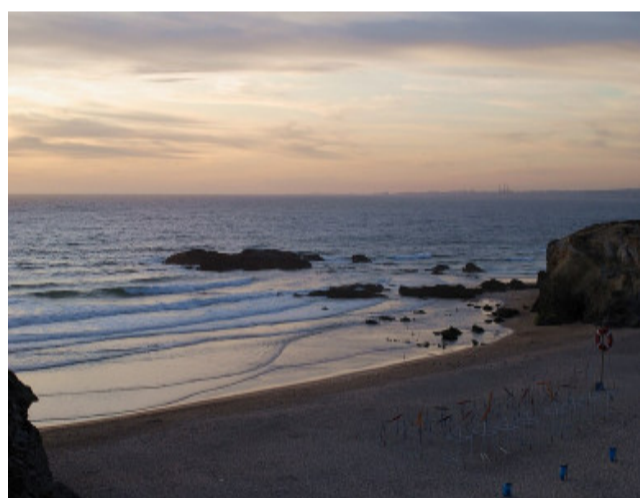
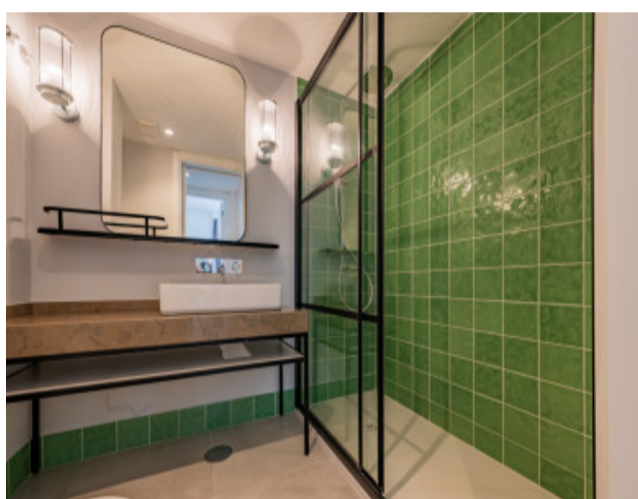
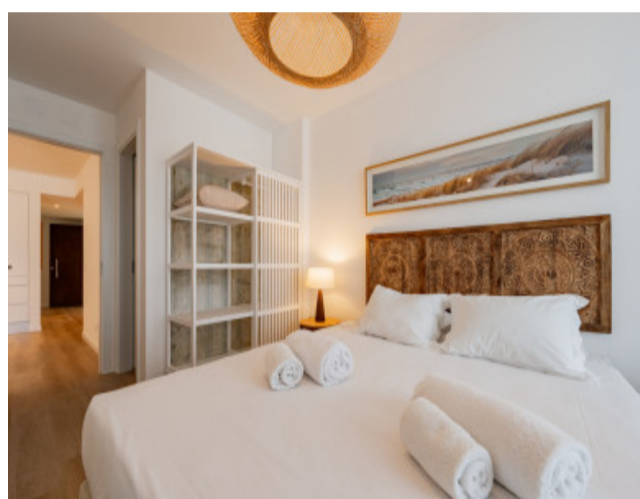
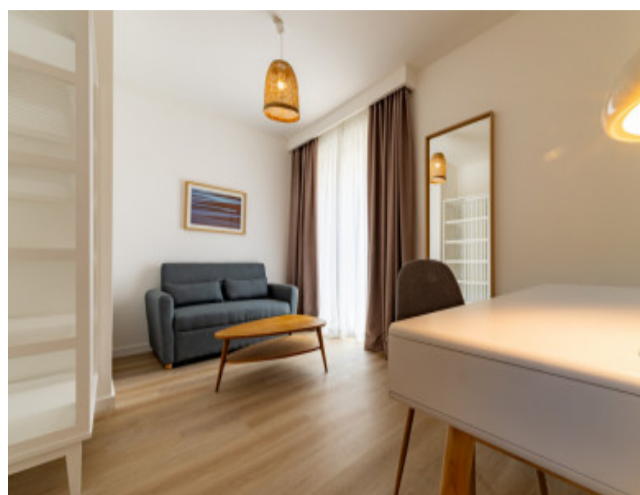
The flat has a large living room with excellent natural light, ideal for convivial moments, two comfortable bedrooms and an additional space that can be used as an office or interior bedroom, adapting to different needs. The kitchen is fully equipped with modern appliances, promoting functionality and practicality in everyday life. It also has two bathrooms, contemporary finishes and air conditioning in all rooms, ensuring comfort throughout the year.

The Pestana Porto Covo Village condominium offers a communal swimming pool and green spaces, promoting an environment of relaxation and leisure. The privileged location allows easy access on foot to Praia Grande (700 meters, about 10 minutes), restaurants, local shops and the village centre (5 minutes), ensuring convenience and quality of life. In terms of access, it is a 20-minute drive from the urban centres of Sines and Cercal do Alentejo, and about 1h30 minutes from Lisbon International Airport, facilitating national and international travel.

The surroundings are characterised by being a quiet area, with traditional commerce, restaurants, green areas and easy accessibility. Ideal for those looking for a coastal refuge with comfort, safety and proximity to tourist attractions on the Alentejo Coast.

Note: The photographs shown are indicative, corresponding to the model flat

# Gallery



logo

Telephone: +351 213 471 603

Email: [info@portugalhomes.com](mailto:info@portugalhomes.com)

Praça da Alegria 1, 3rd Floor, 1250-004 Lisboa, Portugal Licence AMI - 14414 | APEMIP 5940

## Additional Details

Telephone: +351 213 471 603

Email: [info@portugalhomes.com](mailto:info@portugalhomes.com)

Praça da Alegria 1, 3rd Floor, 1250-004 Lisboa, Portugal Licence AMI - 14414 | APEMIP 5940

logo

## Site Floorplan

logo

Telephone: +351 213 471 603

Email: [info@portugalhomes.com](mailto:info@portugalhomes.com)

Praça da Alegria 1, 3rd Floor, 1250-004 Lisboa, Portugal Licence AMI - 14414 | APEMIP 5940