



Bouça Ribas

**€365,000 -
€640,000**

Ref: DL36529

1509 sqm

Bouça Ribas DevelopmentBouça Ribas is a new residential development located in Campanhã, Porto, which invites...

Property Description

Bouça Ribas Development

Bouça Ribas is a new residential development located in Campanhã, Porto, which invites you to elevate everyday life through a balanced combination of comfort, construction quality and well-being.

With a contemporary architecture with sober and elegant lines, Bouça Ribas is part of an area in full urban transformation, benefiting from wide and unobstructed views and abundant natural light in all fractions. A few steps from Campanhã Park and close to the Dragão Stadium, the development combines residential tranquillity with urban convenience.

The project consists of 37 apartments, spread over 6 floors, with typologies T1, T2 and T3 and areas between 60 m² and 160 m². All fractions were designed to offer functionality, comfort and efficient use of spaces, responding to the demands of contemporary life.

Construction quality and finishes

Bouça Ribas is distinguished by its high quality finishes, carefully selected to ensure durability and a timeless aesthetic.

The social areas and bedrooms feature floating vinyl flooring with a natural oak finish, creating cosy and sophisticated environments. The kitchens are equipped with water-repellent MDF furniture and TEKA appliances, ensuring functionality and efficiency.

The bathrooms include high quality ceramic tiles and Valadares sanitary ware, reflecting a demanding construction standard.

The ventilated façade and the aluminium frames with thermal cut guarantee efficient thermal and acoustic performance, reinforcing comfort inside the homes. The building also has two elevators and a total of 46 parking spaces, ensuring convenience for residents.

A strategic growth area

Campanhã asserts itself as one of the main growth poles in the eastern part of Porto, with several urban projects that are redefining the area and consolidating its position as a modern, dynamic and future-oriented territory.

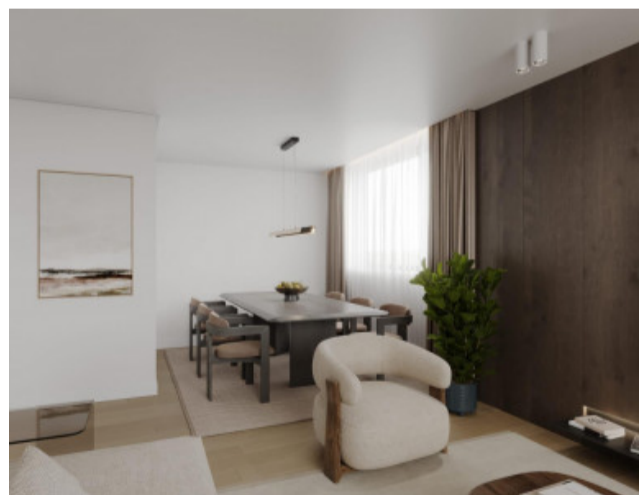
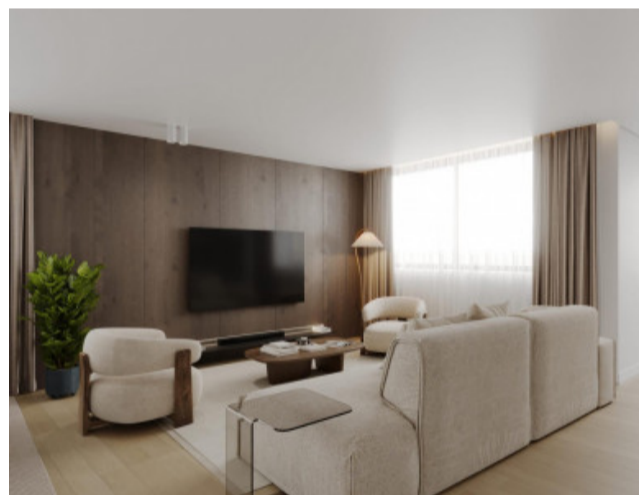
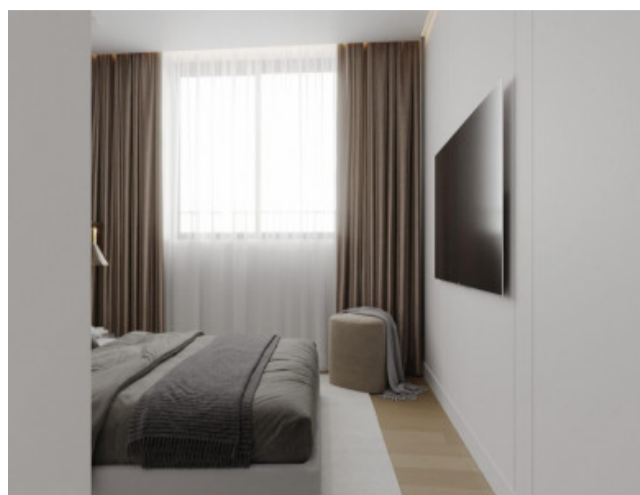
The proximity to shopping centres, quick access to the VCI, sports facilities, schools and local shops reinforces the attractiveness of the location, while benefiting from the proximity to green areas and public leisure spaces.

Bouça Ribas is more than a new residential building — it is a housing proposal designed for those looking for a balance between city and quality of life, with high potential for appreciation in an urban axis in full expansion.

Don't miss this opportunity, make your reservation

logo

Gallery



logo

Telephone: +351 213 471 603

Email: info@portugalhomes.com

Praça da Alegria 1, 3rd Floor, 1250-004 Lisboa, Portugal Licence AMI - 14414 | APEMIP 5940

Additional Details

Attributes

Net Area 1509sq m	Gross Area 1509sq m	Year Built 2028
-----------------------------	-------------------------------	---------------------------

New Development Features

logo

Telephone: +351 213 471 603

Email: info@portugalhomes.com

Praça da Alegria 1, 3rd Floor, 1250-004 Lisboa, Portugal Licence AMI - 14414 | APEMIP 5940

Development Units

Fraction	Bedrooms	Floor Size	Price
1.04	2	92 sqm	€367,500
3.04	2	92 sqm	€385,000
2.04	2	92 sqm	€375,000
4.04	2	92 sqm	€365,000
4.02	2	100 sqm	€390,000
0.03	3	160 sqm	€640,000
6.02	3	119 sqm	€522,500

logo

Telephone: +351 213 471 603

Email: info@portugalhomes.com

Praça da Alegria 1, 3rd Floor, 1250-004 Lisboa, Portugal Licence AMI - 14414 | APEMIP 5940

Site Floorplan

logo

Telephone: +351 213 471 603

Email: info@portugalhomes.com

Praça da Alegria 1, 3rd Floor, 1250-004 Lisboa, Portugal Licence AMI - 14414 | APEMIP 5940