



€1,370,000

Ref: PP176245

266 sqm

Step into a home that radiates comfort, style, and a welcoming spirit. Thoughtfully refurbished with premium materials and elegant design details, this villa perfectly balances traditional charm with...

• Pool

• A/C

Telephone: +351 213 471 603

Email: info@portugalhomes.com

Praça da Alegria 1, 3rd Floor, 1250-004 Lisboa, Portugal Licence AMI - 14414 | APEMIP 5940

logo not

Property Description

Step into a home that radiates comfort, style, and a welcoming spirit. Thoughtfully refurbished with premium materials and elegant design details, this villa perfectly balances traditional charm with modern living. The property features an individual heating system with underfloor heating and air conditioning.

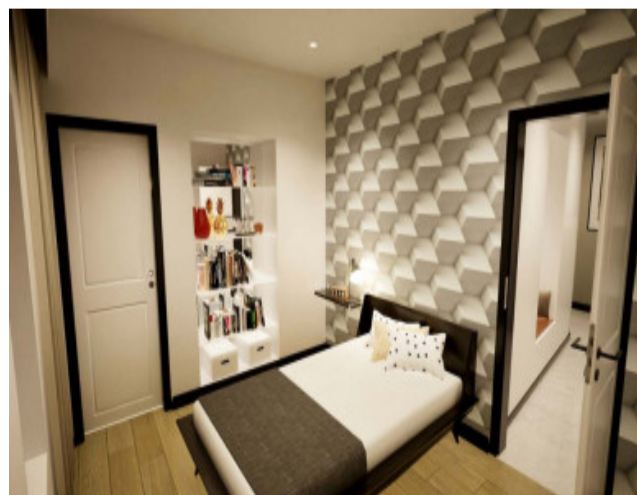
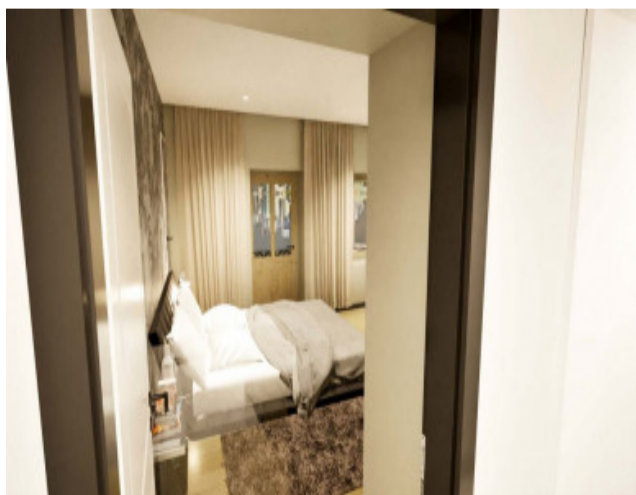
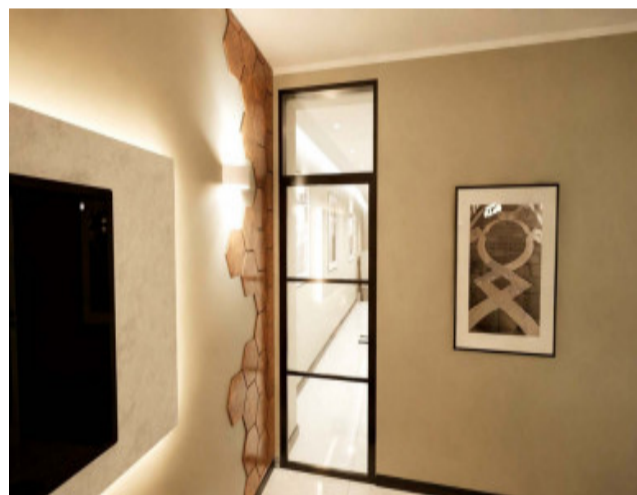
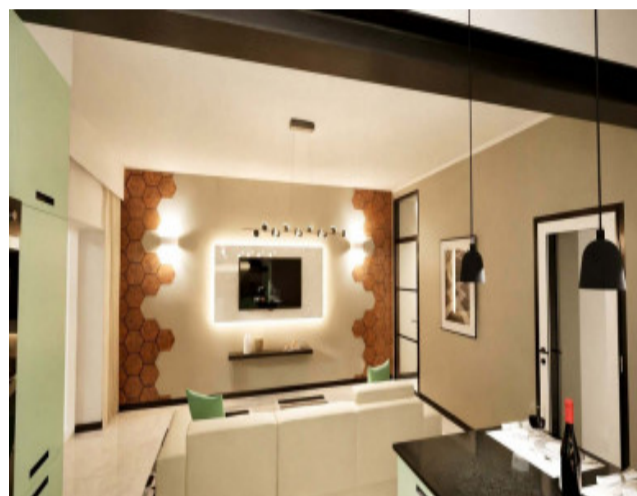
The property offers four spacious bedrooms, each with its own en-suite bathroom. Three contemporary open-plan kitchens make cooking a delight — ideal for those who love to entertain or enjoy creating meals with family. With two living rooms and two dining areas, there's plenty of space to relax, connect, and celebrate special moments together. In total, the villa features six beautifully finished bathrooms, combining sophistication with functionality.

A graceful entrance hall sets the tone for the entire home, welcoming you with warmth and refinement. Outside, embrace the Algarve lifestyle with a private swimming pool, a rooftop terrace complete with a jacuzzi and sea views, and inviting outdoor lounging spaces.

Vila de Pêra is a charming coastal town in the Algarve, close to the extensive beaches of Armação de Pêra and the surrounding areas. Known for its relaxed lifestyle, local culture and proximity to the beachfront, it offers an excellent quality of life and easy access to restaurants, services and leisure activities.

Don't hesitate to book a viewing and discover this great opportunity.

Gallery



logo

Telephone: +351 213 471 603

Email: info@portugalhomes.com

Praça da Alegria 1, 3rd Floor, 1250-004 Lisboa, Portugal Licence AMI - 14414 | APEMIP 5940

Additional Details

Attributes

| | | |
|----------------------------|----------------------------|------------------------------|
| Status Available | Net Area 266sq m | Gross Area 266sq m |
| Year Built 1970 | | |

Property Features

| | |
|------|-----|
| Pool | A/C |
|------|-----|

Site Floorplan

logo

Telephone: +351 213 471 603

Email: info@portugalhomes.com

Praça da Alegria 1, 3rd Floor, 1250-004 Lisboa, Portugal Licence AMI - 14414 | APEMIP 5940