

€795,000

Ref: JL-95084

4960 sqm

Land plot of 4,960 sqm, situated within the Sacotes Execution Unit, in a strategic location in Algueirão, Sintra, just 5 minutes from the A16 motorway and with quick access to the...

Property Description

Land plot of 4,960 sqm, situated within the Sacotes Execution Unit, in a strategic location in Algueirão, Sintra, just 5 minutes from the A16 motorway and with quick access to the A9/CREL, IC19 and Greater Lisbon.

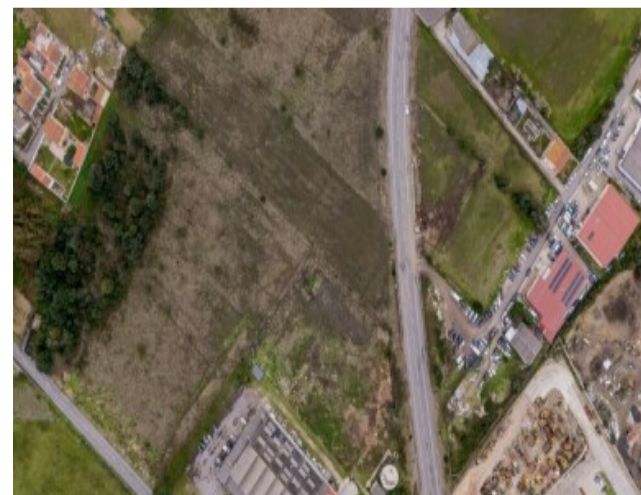
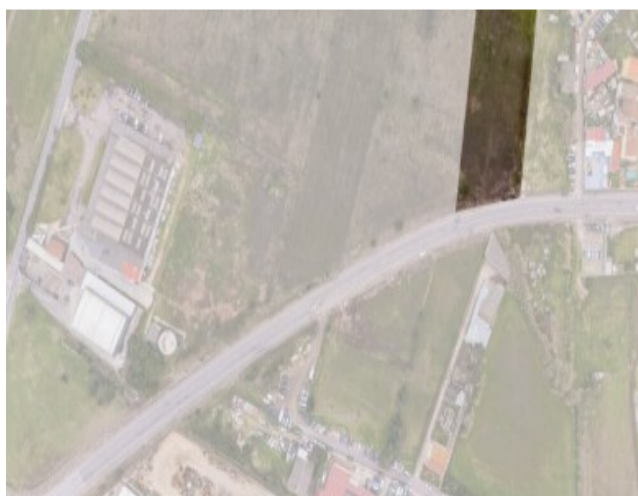
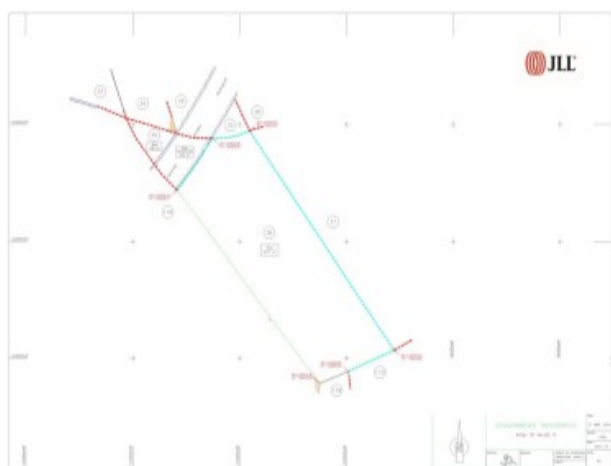
The land permits the construction of 3,819.6 m², intended for warehousing, logistics, non-polluting industry, retail and services, offering flexibility for different business projects.

Integrated within Economic Activity Zones, it benefits from a prime location for last-mile logistics operations, with efficient connections to the main urban centres and consumer hubs in the Lisbon region.

The Sacotes Execution Unit has already completed the public consultation phase and is currently being consolidated for final approval by Sintra Town Council, which contributes to greater planning certainty and appreciation potential.

A solid opportunity for investors, developers and logistics operators.

One of the few land plots with this size, building capacity and logistics vocation available in Greater Lisbon.



logo

Telephone: +351 213 471 603

Email: info@portugalhomes.com

Praça da Alegria 1, 3rd Floor, 1250-004 Lisboa, Portugal Licence AMI - 14414 | APEMIP 5940

Additional Details

Telephone: +351 213 471 603

Email: info@portugalhomes.com

Praça da Alegria 1, 3rd Floor, 1250-004 Lisboa, Portugal Licence AMI - 14414 | APEMIP 5940

logo

Site Floorplan

