

# €1,495,000

Ref: JL-91698

4-bedroom apartment with 257 sqm of gross private area, situated in Avenidas Novas, in Lisbon, near the Ritz Hotel, in a building designed by Architect Cassiano Branco. With 4-metre...

- A/C
- Gym
- Electric Blinds
- Washing Machine
- Equipped Kitchen
- Video Intercom
- Fridge
- Lift
- Dishwasher
- Oven

Telephone: +351 213 471 603  
Email: [info@portugalhomes.com](mailto:info@portugalhomes.com)

Praça da Alegria 1, 3rd Floor, 1250-004 Lisboa, Portugal Licence AMI - 14414 | APEMIP 5940

## Property Description

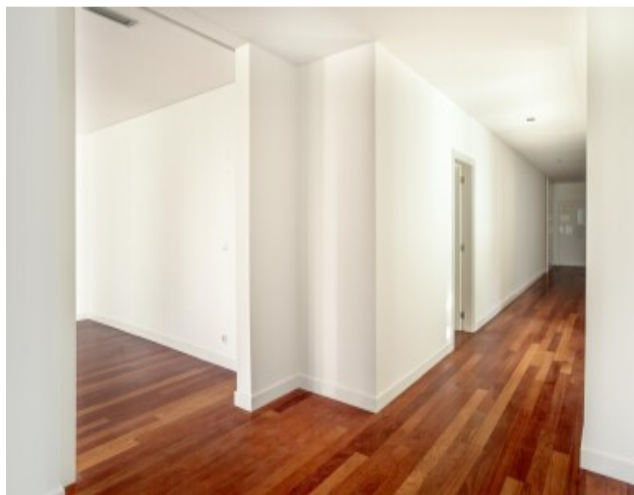
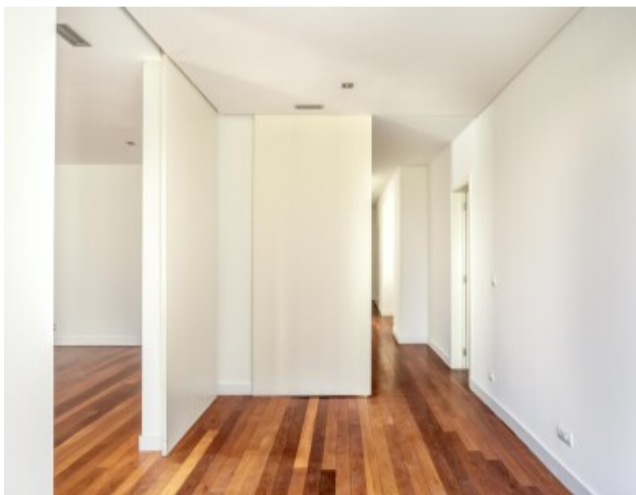
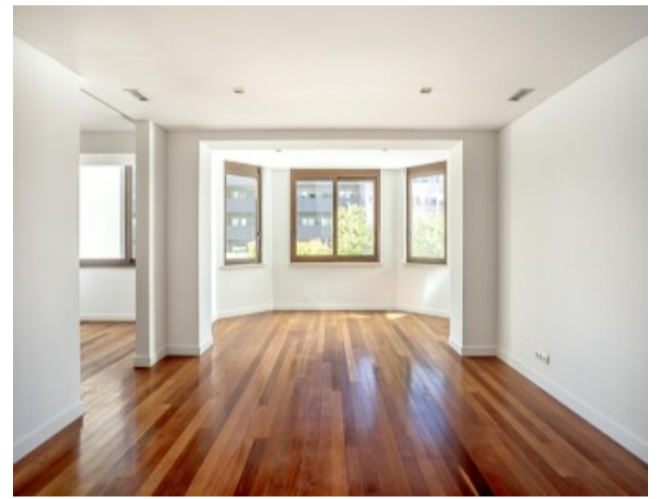
4-bedroom apartment with 257 sqm of gross private area, situated in Avenidas Novas, in Lisbon, near the Ritz Hotel, in a building designed by Architect Cassiano Branco.

With 4-metre high ceilings and spacious rooms, the flat comprises a 58 m<sup>2</sup> living and dining room.

The private area features four bedrooms, three of which are en-suite with fitted wardrobes, two additional bathrooms, and a semi-fitted kitchen.

Easy parking available for residents in the area.

Located in one of Lisbon's most established residential neighbourhoods, it is close to Eduardo VII Park, offering gardens, cultural facilities, shops and services, as well as an extensive public transport network. A 10-minute walk from Rato underground station and 20 minutes by car from Lisbon's Humberto Delgado Airport.



logo

Telephone: +351 213 471 603

Email: [info@portugalhomes.com](mailto:info@portugalhomes.com)

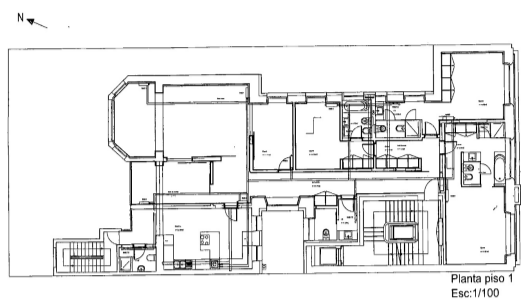
Praça da Alegria 1, 3rd Floor, 1250-004 Lisboa, Portugal Licence AMI - 14414 | APEMIP 5940

## Additional Details

### Property Features

A/C	Equipped Kitchen	Lift
Gym	Video Intercom	Dishwasher
Electric Blinds	Fridge	Oven
Washing Machine		

# Site Floorplan



Planta piso 1  
Esc:1/100