

€975,000

Ref: JL-91469

4+1-bedroom apartment with 190 m² of gross private area, in Avenidas Novas, Lisbon. Located in a slab construction building with elevator, the apartment, with two fronts and for tot...

- Lift

Telephone: +351 213 471 603
Email: info@portugalhomes.com

Praça da Alegria 1, 3rd Floor, 1250-004 Lisboa, Portugal Licence AMI - 14414 | APEMIP 5940

Property Description

4+1-bedroom apartment with 190 m² of gross private area, in Avenidas Novas, Lisbon.

Located in a slab construction building with elevator, the apartment, with two fronts and for total renovation, comprises four bedrooms, a living room, kitchen and three bathrooms.

It benefits from plenty of natural light and spacious rooms with great potential for appreciation.

The versatile configuration makes it ideal for own housing or investment.

Parking is available in the area with resident permit or by arrangement in nearby car parks.

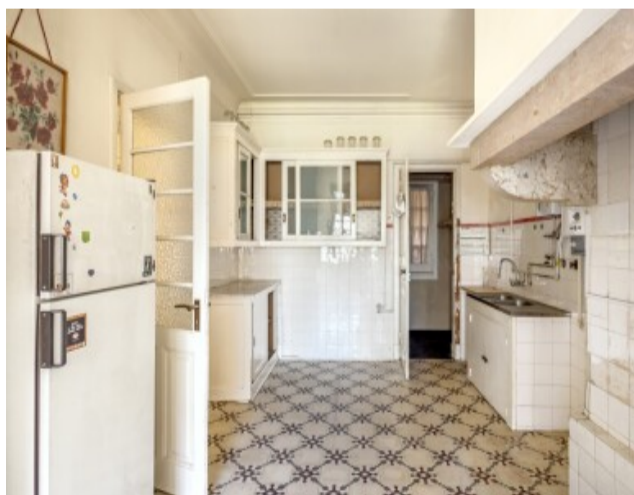
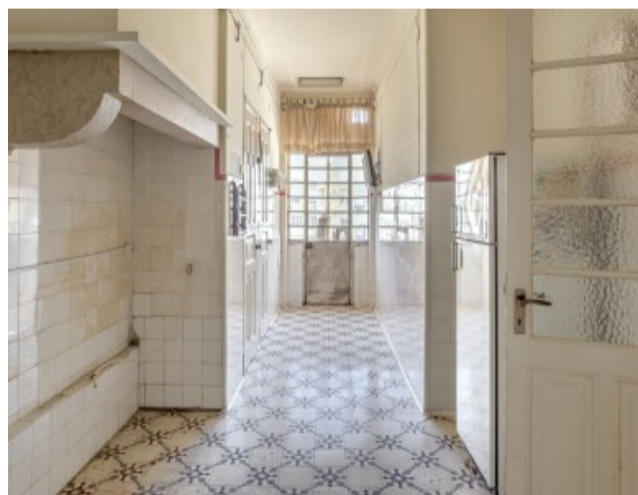
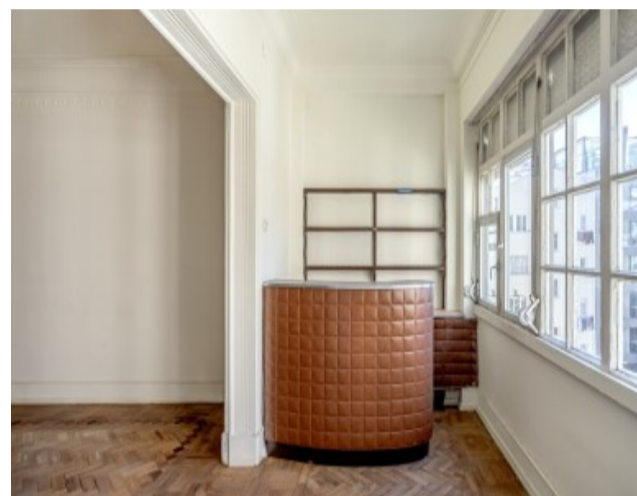
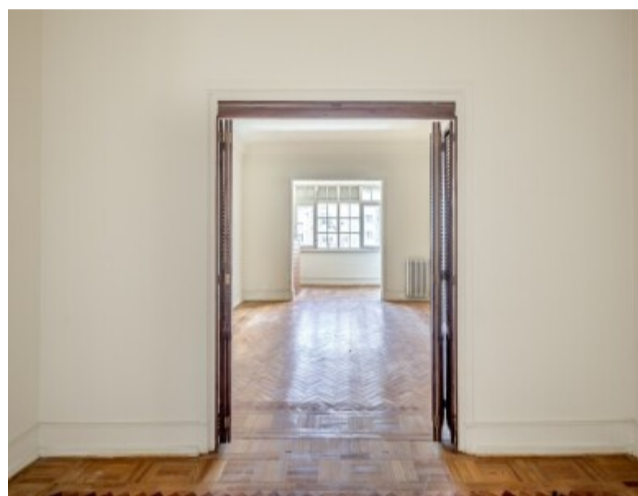
Located on Rua Rodrigo da Fonseca, a point of excellence in the prestigious Avenidas Novas parish, just a few meters from the iconic Avenida da Liberdade, one of Lisbon's most noble arteries.

The privileged location offers immediate access to the city's main road networks and the A5, ensuring exceptional connectivity.

Lisbon Airport is just 15 minutes away. 2 minutes walking distance from Liceu Maria Amália Vaz de Carvalho, Parque Eduardo VII and Clube VII, and 10 minutes from Marquês de Pombal metro station.

By car, it is 3 minutes from Amoreiras Shopping Center, Lycée Français Charles Lepierre, El Corte Inglés and NOVA University of Lisbon.

Gallery



logo

Telephone: +351 213 471 603

Email: info@portugalhomes.com

Praça da Alegria 1, 3rd Floor, 1250-004 Lisboa, Portugal Licence AMI - 14414 | APEMIP 5940

Additional Details

Property Features

Lift

logo

Telephone: +351 213 471 603

Email: info@portugalhomes.com

Praça da Alegria 1, 3rd Floor, 1250-004 Lisboa, Portugal Licence AMI - 14414 | APEMIP 5940

Site Floorplan

