



€4,950,000

Ref: DL36105

357 sqm

4+1 bedroom villa located in the Sublime Comporta Development, with 357m2 of gross construction area, set on a plot of 6...

Telephone: +351 213 471 603

Email: info@portugalhomes.com

Praça da Alegria 1, 3rd Floor, 1250-004 Lisboa, Portugal Licence AMI - 14414 | APEMIP 5940

logo not

Property Description

4+1 bedroom villa located in the Sublime Comporta Development, with 357m² of gross construction area, set on a plot of 6,011m².

Located at the end of the development and with an unobstructed view over the countryside, with total privacy.

The villa consists of an open space kitchen for the dining and living room, with large windows that allow constant contact with nature. It has 1 mastersuite, 3 suites and a bedroom/office and leisure area in the basement. All rooms have access to a private outdoor deck.

With fully equipped kitchen, suspended fireplace, integrated air conditioning, solar panels and covered parking.

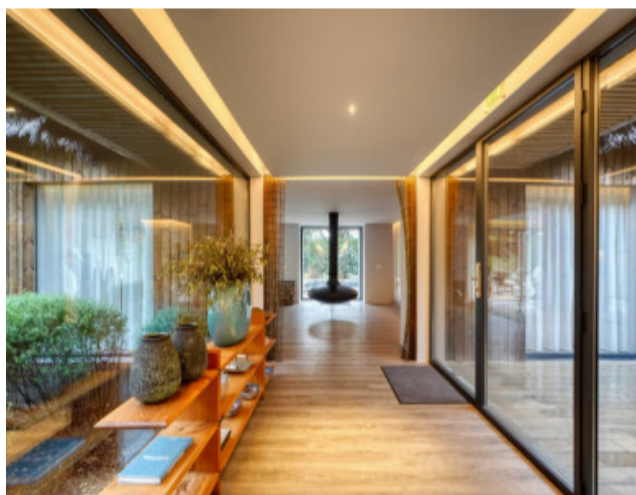
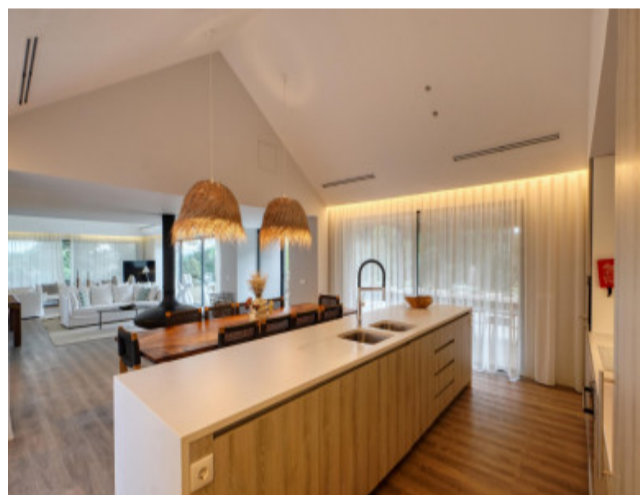
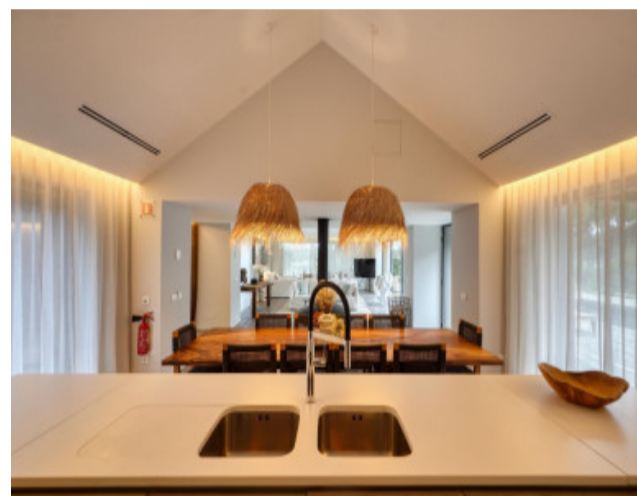
Outside, there is a wooden deck area with an outdoor dining area and a swimming pool with 51.80m².

With a solid track record of profitability, with five years of history.

The Sublime Comporta Development is a reference project in the region, which is developed on a plot of 17 hectares, with a classification of 5*, consisting of 22 independent villas and a hotel component with 23 rooms, with a differentiated offer of amenities and services with the main restaurant of the hotel called Sem Porta, the intimate Ofyr restaurant with capacity for 14 people, the "Botanical" Bar, Spa with massage rooms and indoor pool, Outdoor Pool, Pool Bar, Yoga Pavilion and Gym, Tennis and Padel Court, Retreat and Meeting Room.

Located in Muda, just 10 minutes driving distance from the main beaches of the region and golf courses, 1h15 minutes from Lisbon.

Gallery



logo

Telephone: +351 213 471 603

Email: info@portugalhomes.com

Praça da Alegria 1, 3rd Floor, 1250-004 Lisboa, Portugal Licence AMI - 14414 | APEMIP 5940

Additional Details

Telephone: +351 213 471 603

Email: info@portugalhomes.com

Praça da Alegria 1, 3rd Floor, 1250-004 Lisboa, Portugal Licence AMI - 14414 | APEMIP 5940

logo

Site Floorplan

Telephone: +351 213 471 603

Email: info@portugalhomes.com

Praça da Alegria 1, 3rd Floor, 1250-004 Lisboa, Portugal Licence AMI - 14414 | APEMIP 5940

logo