



## Land Roots River Apartments

**€540,000 -  
€830,000**

Ref: DL33745

1995 sqm

At the Land Roots River Apartments Development, you can have the privilege of waking up every day with a unique view  
ove...



## Property Description

At the Land Roots River Apartments Development, you can have the privilege of waking up every day with a unique view over the Douro River and the city of Porto. Live with the Douro at your window.

Located in the historic heart of Vila Nova de Gaia, just a few steps from Cais de Gaia, the Land Roots River Apartments Development combines comfort, exclusivity and a simply unbeatable location. An area full of history, where the emblematic rabelo boats brought Port Wine to the cellars.

The apartments available are T2 and T2 Duplex, all with very generous areas, outdoor spaces and parking space, offering the ideal balance between functionality and well-being.

The Land Roots River Apartments development offers an indoor pool, gym, sauna, Turkish bath, pantry, living area, changing rooms and green spaces – all designed to provide moments of rest, leisure and conviviality, without having to leave home.

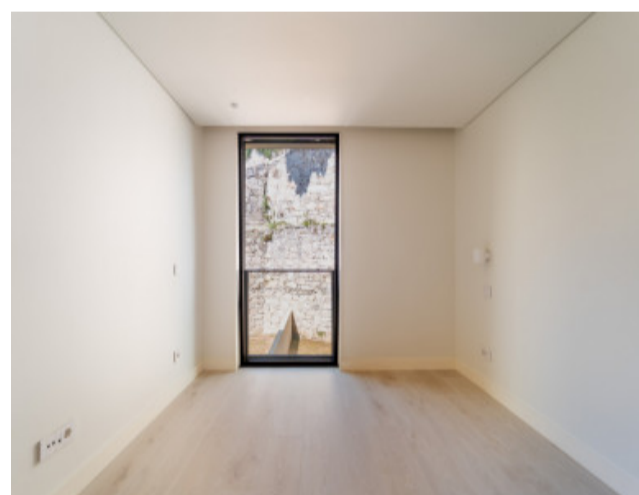
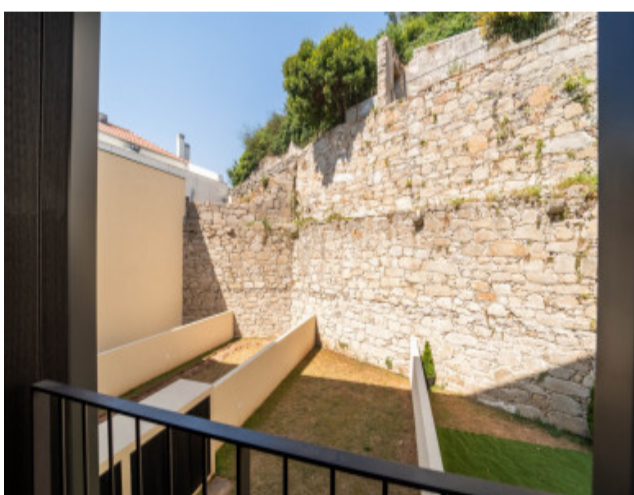
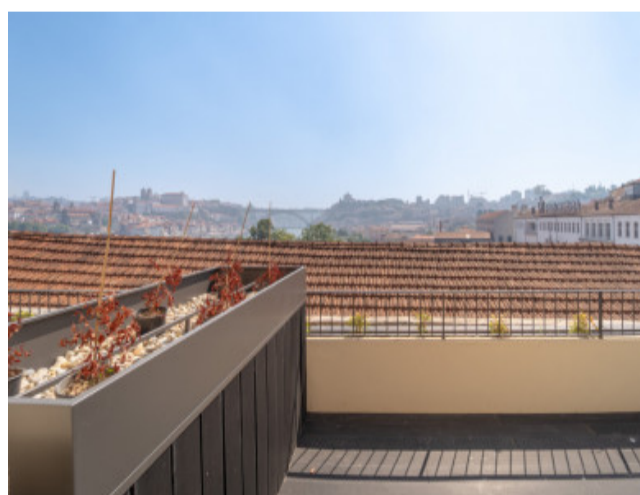
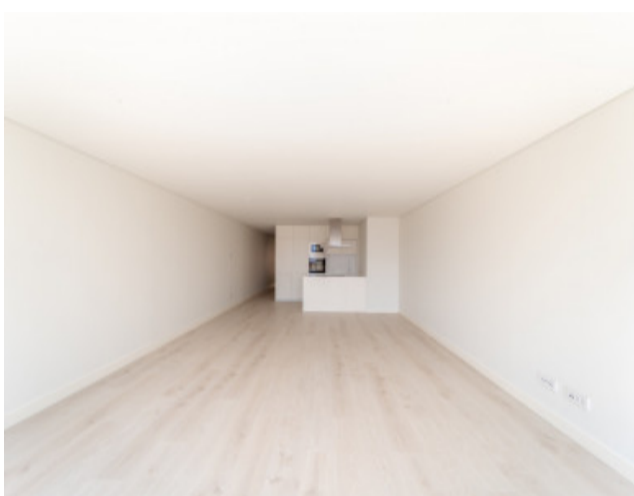
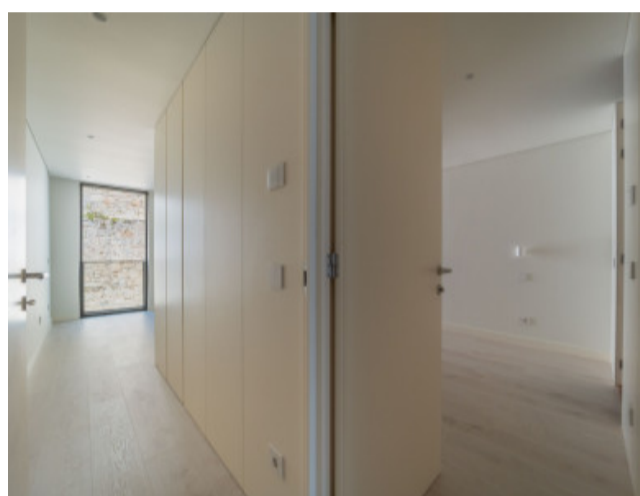
The finishes reflect the attention to detail and commitment to quality: underfloor heating in all rooms, excellent Hyline brand window frames and kitchens fully equipped with BOSCH appliances.

If you are looking to live with comfort, view and history, this is the right place.

Ready to book.

Schedule your visit now.

## Gallery



logo

Telephone: +351 213 471 603

Email: [info@portugalhomes.com](mailto:info@portugalhomes.com)

Praça da Alegria 1, 3rd Floor, 1250-004 Lisboa, Portugal Licence AMI - 14414 | APEMIP 5940

## Additional Details

### Attributes

<b>Net Area</b> 1995sq m	<b>Gross Area</b> 1995sq m	<b>Year Built</b> 2025
-----------------------------	-------------------------------	---------------------------

### New Development Features

logo

Telephone: +351 213 471 603

Email: [info@portugalhomes.com](mailto:info@portugalhomes.com)

Praça da Alegria 1, 3rd Floor, 1250-004 Lisboa, Portugal Licence AMI - 14414 | APEMIP 5940

## Development Units

Fraction	Bedrooms	Floor Size	Price
13	2	122 sqm	€725,000
33	2	100 sqm	€830,000
32	2	99 sqm	€830,000
1	2	124 sqm	€540,000

logo

Telephone: +351 213 471 603

Email: [info@portugalhomes.com](mailto:info@portugalhomes.com)

Praça da Alegria 1, 3rd Floor, 1250-004 Lisboa, Portugal Licence AMI - 14414 | APEMIP 5940

## Site Floorplan

logo

Telephone: +351 213 471 603

Email: [info@portugalhomes.com](mailto:info@portugalhomes.com)

Praça da Alegria 1, 3rd Floor, 1250-004 Lisboa, Portugal Licence AMI - 14414 | APEMIP 5940