



Serpa 687

**€290,000 -
€325,000**

Ref: DL32698

905 sqm

Serpa 687 development, in the heart of Matosinhos, consisting exclusively of 1 bedroom apartments designed for those who...

Property Description

Serpa 687 development, in the heart of Matosinhos, consisting exclusively of 1 bedroom apartments designed for those who value comfort, functionality and a privileged location.

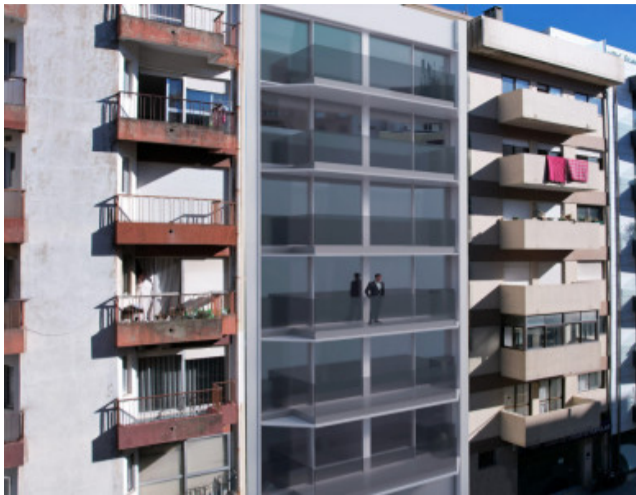
This modern building is distinguished by its contemporary architecture and high quality of construction, integrating harmoniously into one of the most dynamic and complete areas of the metropolitan area of Porto, the city of Matosinhos. The location is truly strategic, with quick access to the A28, VCI and Circunvalação, excellent public transport connections, including metro and buses, within walking distance of the beaches of Matosinhos, the seafront, and important service and commerce hubs.

Living in the Serpa 687 Development is to have everything at your doorstep: restaurants, supermarkets, pharmacies, schools, gym, cafes, traditional commerce, health centres and leisure spaces. It is the ideal choice for those looking for practicality in their daily lives without giving up quality of life.

The 1 bedroom apartments offer well-distributed spaces, with superior quality finishes. Highlights include fully equipped kitchens, floating oak floors, air conditioning, double-glazed window frames, electric shutters and bathrooms with crockery and taps of reference brands.

The Serpa 687 Development is designed for those looking for an urban and practical lifestyle, ideal both for own residence and for investment in one of the most valued residential markets in the region. An exclusive opportunity to live in Matosinhos with quality, convenience and sophistication.

Gallery



logo

Telephone: +351 213 471 603

Email: info@portugalhomes.com

Praça da Alegria 1, 3rd Floor, 1250-004 Lisboa, Portugal Licence AMI - 14414 | APEMIP 5940

Additional Details

New Development Features

Telephone: +351 213 471 603

Email: info@portugalhomes.com

Praça da Alegria 1, 3rd Floor, 1250-004 Lisboa, Portugal Licence AMI - 14414 | APEMIP 5940

logo

Development Units

Fraction	Bedrooms	Floor Size	Price
T1.1.0	1	53 sqm	€325,000
T1.3.2	1	53 sqm	€290,000

logo

Telephone: +351 213 471 603

Email: info@portugalhomes.com

Praça da Alegria 1, 3rd Floor, 1250-004 Lisboa, Portugal Licence AMI - 14414 | APEMIP 5940

Site Floorplan

Telephone: +351 213 471 603

Email: info@portugalhomes.com

Praça da Alegria 1, 3rd Floor, 1250-004 Lisboa, Portugal Licence AMI - 14414 | APEMIP 5940

logo