



**Boavista 5205**

**€2,081,688 -  
€2,914,797**

Ref: DL17496

2819 sqm

Boavista 5205 — Exclusive Residences Facing the City Park and the SeaBoavista 5205 is a gated community of abs...



## Property Description

### Boavista 5205 — Exclusive Residences Facing the City Park and the Sea

Boavista 5205 is a gated community of absolutely exclusive character, consisting of only 8 apartments, located in one of the most privileged areas of Porto, on Avenida da Boavista, in front of the City Park and a few meters from the seafront.

Currently, only a few fractions are available, all ready for deeding, representing a rare opportunity for immediate acquisition in a low-density, high-quality project.

The development consists of 4 and 4 bedroom apartments in duplex format, with total areas that can exceed 500 m<sup>2</sup>, designed to offer an experience marked by privacy, spaciousness and connection to the outside.

Some of the units are distinguished by the presence of private gardens and swimming pool, creating true urban refuges where the outdoor space plays a central role in the living experience.

Each fraction benefits from a unique circulation concept, with a private lift with direct access from the box to the interior of the flat, ensuring total comfort, discretion and safety.

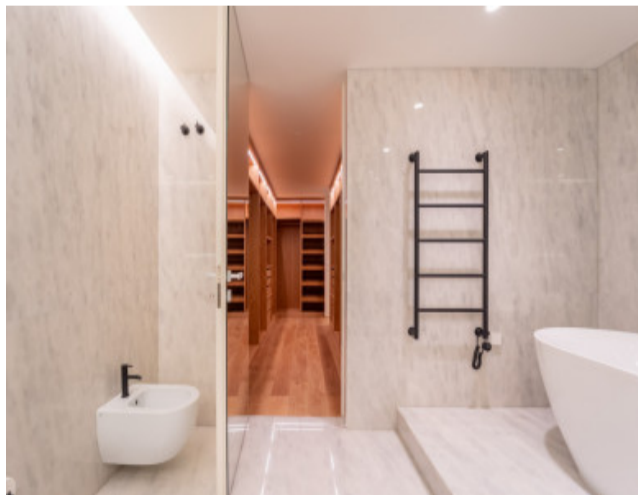
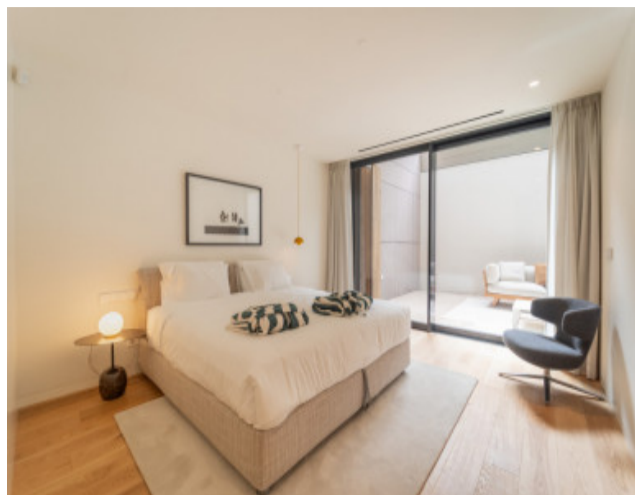
The interiors reveal a contemporary approach, where sobriety and functionality are combined with high quality materials, namely wooden floors, marble-covered bathrooms and fully equipped kitchens, with a strong concern for comfort and energy efficiency.

The architecture of the project privileges the relationship with the natural surroundings, integrating patios, gardens and private terraces that extend the interior spaces and reinforce the connection to the outside.

The location is absolutely differentiating. In front of the largest urban park in the country and just a few minutes from the beach, it offers a rare balance between nature, sea and centrality. The surroundings include reference schools, services, commerce and excellent access to the city's main roads.

The Boavista 5205 asserts itself as a unique product in the top residential market, ideal for those looking for exclusivity, space and a truly unrepeatably location in Porto.

# Gallery



logo

Telephone: +351 213 471 603

Email: [info@portugalhomes.com](mailto:info@portugalhomes.com)

Praça da Alegria 1, 3rd Floor, 1250-004 Lisboa, Portugal Licence AMI - 14414 | APEMIP 5940

## Additional Details

### Attributes

<b>Net Area</b> 2819sq m	<b>Gross Area</b> 2819sq m	<b>Year Built</b> 2025
-----------------------------	-------------------------------	---------------------------

### New Development Features

logo

Telephone: +351 213 471 603

Email: [info@portugalhomes.com](mailto:info@portugalhomes.com)

Praça da Alegria 1, 3rd Floor, 1250-004 Lisboa, Portugal Licence AMI - 14414 | APEMIP 5940

## Development Units

Fraction	Bedrooms	Floor Size	Price
A1	4	309 sqm	€2,859,048
A2	4	285 sqm	€2,081,688
A4	4	309 sqm	€2,914,797
A3	4	285 sqm	€2,081,688

logo

Telephone: +351 213 471 603

Email: [info@portugalhomes.com](mailto:info@portugalhomes.com)

Praça da Alegria 1, 3rd Floor, 1250-004 Lisboa, Portugal Licence AMI - 14414 | APEMIP 5940

## Site Floorplan

logo

Telephone: +351 213 471 603

Email: [info@portugalhomes.com](mailto:info@portugalhomes.com)

Praça da Alegria 1, 3rd Floor, 1250-004 Lisboa, Portugal Licence AMI - 14414 | APEMIP 5940