

€1,200,000

Ref: DL35026

190 sqm

3 bedroom villa with 190 m2 of private gross area, terrace and garden, set in a plot of 243 m2, located in the centre of...

Telephone: +351 213 471 603

Email: info@portugalhomes.com

Praça da Alegria 1, 3rd Floor, 1250-004 Lisboa, Portugal Licence AMI - 14414 | APEMIP 5940

logo not

Property Description

3 bedroom villa with 190 m2 of private gross area, terrace and garden, set in a plot of 243 m2, located in the centre of Comporta.

The house is spread over two floors. On the ground floor there is the kitchen, guest bathroom, living and dining room with access to the outdoor garden and a suite. On the upper floor, there are two bedrooms with access to a common balcony, of which one is the Master suite with private bathroom and closet and the second bedroom with double beds, and also a bathroom to support the second bedroom.

Outside, we find a dining area and a garden with an outdoor leisure area. There is also private parking for one car.

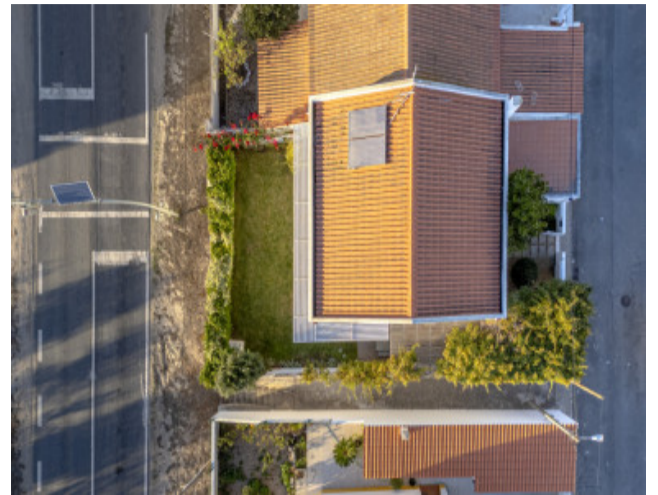
With a privileged view over the agricultural fields and with excellent sun exposure to enjoy the sunset.

Properly equipped with recent appliances and air conditioning.

Within walking distance of the main shopping and service establishments, namely restaurants, the Almalusa Comporta hotel, decoration shops, school, pharmacy, police, and only 1 km from Comporta Beach.

With excellent accessibility to the national road that connects Comporta to Alcácer and, later, Alcácer to Lisbon via the A2. Just 1h15 minutes from Lisbon.

Gallery



logo

Telephone: +351 213 471 603

Email: info@portugalhomes.com

Praça da Alegria 1, 3rd Floor, 1250-004 Lisboa, Portugal Licence AMI - 14414 | APEMIP 5940

Additional Details

Telephone: +351 213 471 603

Email: info@portugalhomes.com

Praça da Alegria 1, 3rd Floor, 1250-004 Lisboa, Portugal Licence AMI - 14414 | APEMIP 5940

logo

Site Floorplan

logo

Telephone: +351 213 471 603

Email: info@portugalhomes.com

Praça da Alegria 1, 3rd Floor, 1250-004 Lisboa, Portugal Licence AMI - 14414 | APEMIP 5940