



**€2,350,000**

Ref: DL33811

494 sqm

3 bedroom villa inserted in the Estates at Spatia resort in Comporta, with 492m2 of gross construction area on a plot of...

Telephone: +351 213 471 603

Email: [info@portugalhomes.com](mailto:info@portugalhomes.com)

Praça da Alegria 1, 3rd Floor, 1250-004 Lisboa, Portugal Licence AMI - 14414 | APEMIP 5940

logo not

## Property Description

3 bedroom villa inserted in the Estates at Spatia resort in Comporta, with 492m<sup>2</sup> of gross construction area on a plot of 23,077 m<sup>2</sup>

The villa consists of a main block with kitchen in open space, dining room, living room, guest bathroom and two bedrooms en suite. In the second block, with independent access is the master suite with office and windows opening onto the pool.

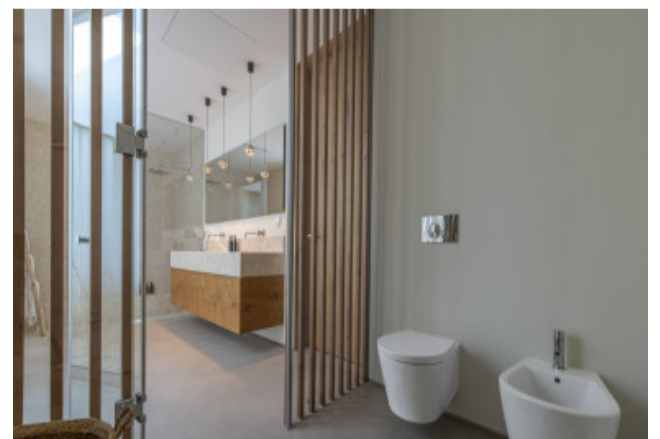
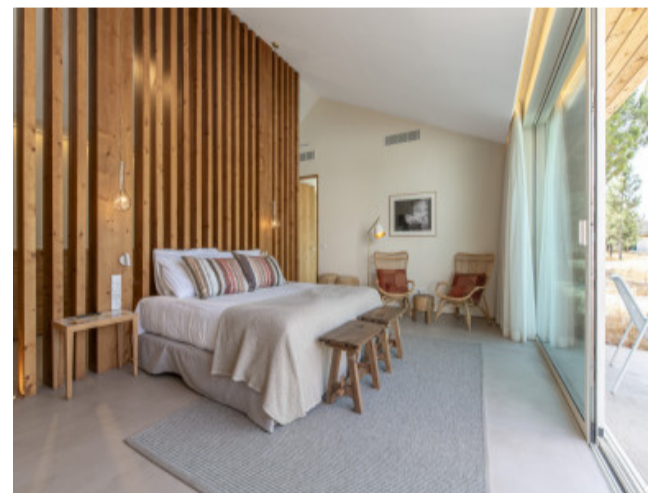
Both the villa is oriented towards the pool and the outdoor garden, where native plants that give privacy to the villa prevail.

Outside we also find a pergola with an outdoor dining table.

It is located in the Estates of Spatia Comporta development with 38 villas, reception, communal swimming pool, tennis, paddle and pikeball courts, restaurant and also a gym and spa.

Just 10 minutes walking distance from the beaches of Carvalhal and Pinheirinho, as well as 15 minutes from the centre of Grândola and access to the motorway to Lisbon.

Don't miss this opportunity!



logo

Telephone: +351 213 471 603

Email: [info@portugalhomes.com](mailto:info@portugalhomes.com)

Praça da Alegria 1, 3rd Floor, 1250-004 Lisboa, Portugal Licence AMI - 14414 | APEMIP 5940

## Additional Details

Telephone: +351 213 471 603

Email: [info@portugalhomes.com](mailto:info@portugalhomes.com)

Praça da Alegria 1, 3rd Floor, 1250-004 Lisboa, Portugal Licence AMI - 14414 | APEMIP 5940

logo

## Site Floorplan

logo

Telephone: +351 213 471 603

Email: [info@portugalhomes.com](mailto:info@portugalhomes.com)

Praça da Alegria 1, 3rd Floor, 1250-004 Lisboa, Portugal Licence AMI - 14414 | APEMIP 5940