

## WAVE Lumare

€975,000

Ref: PP175774

119 sqm

Exclusive Luxury Living by the Sea – Stunning Condominium in Vilamoura Experience the perfect blend of sophistication, comfort, and coastal elegance in this magnificent Condominium, designed...

Telephone: +351 213 471 603

Email: [info@portugalhomes.com](mailto:info@portugalhomes.com)

Praça da Alegria 1, 3rd Floor, 1250-004 Lisboa, Portugal Licence AMI - 14414 | APEMIP 5940

## Property Description

### Exclusive Luxury Living by the Sea – Stunning Condominium in Vilamoura

Experience the perfect blend of sophistication, comfort, and coastal elegance in this magnificent Condominium, designed to embrace natural light and breathtaking sea views. With expansive interiors up to 122m<sup>2</sup> and generous exterior areas reaching 126m<sup>2</sup>, this residence offers 1 or 2 private parking spaces and storage, all within an exclusive development that redefines luxury seaside living.

### A Timeless Architectural Masterpiece

This exceptional condominium is inspired by the Algarve's most treasured elements: the sea and light. Its glass façades seamlessly blend with elegant interiors, maximizing the panoramic views and creating a harmonious connection between nature and modern design.

### Exceptional Amenities & Features

- Resort-Style Living: Outdoor swimming pool, gym, massage room, sauna, and a stylish multifunctional common space.
- Exclusive Finishes: Facades in natural Travertine stone, minimalist double-glazed frames, and elegant wooden deck balconies.
- State-of-the-Art Interiors: Oak wood flooring, soundproof walls, LED recessed lighting, and sleek MDF cabinetry.
- Luxury Bathrooms: High-end NEOLITH ceramic tiles, wall-mounted toilets, and heated floors for ultimate comfort.
- Gourmet Kitchens: Premium SIEMENS appliances, waterproof MDF cabinetry, and ceramic NEOLITH countertops.
- Advanced Technology & Security: Ducted air conditioning, home automation, video surveillance, and fire, flood, and intrusion detection systems.

### Prime Location – The Ultimate Coastal Lifestyle

Located in the heart of Vilamoura, just 30 minutes from Faro Airport, this residence offers privileged access to:

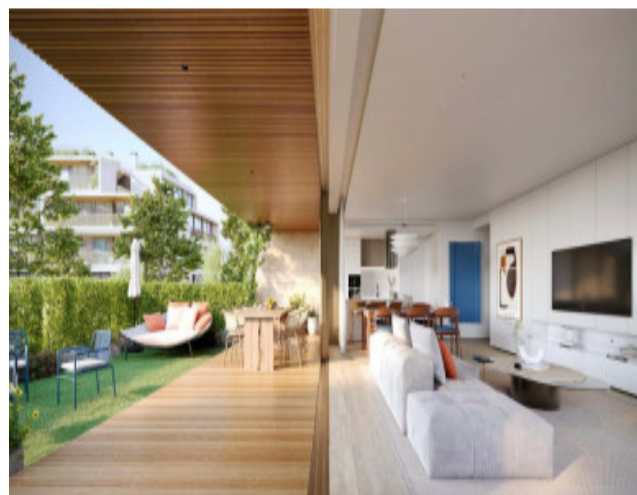
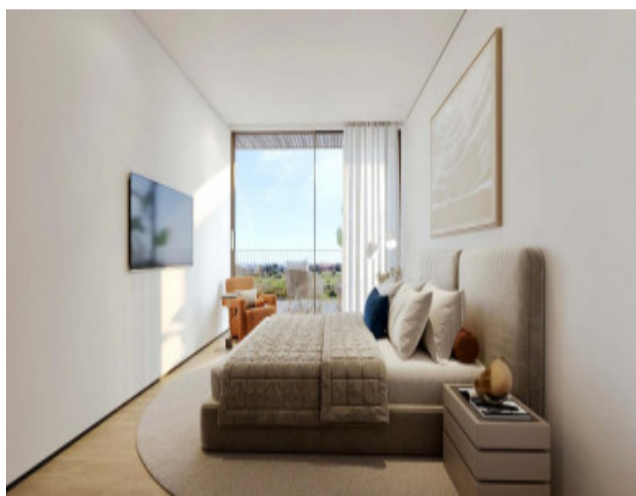
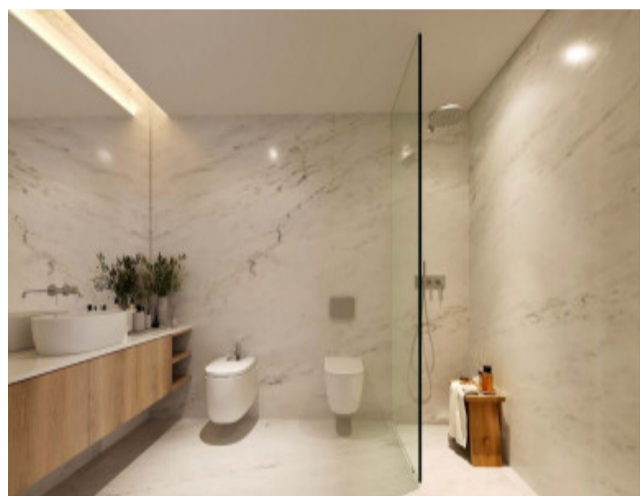
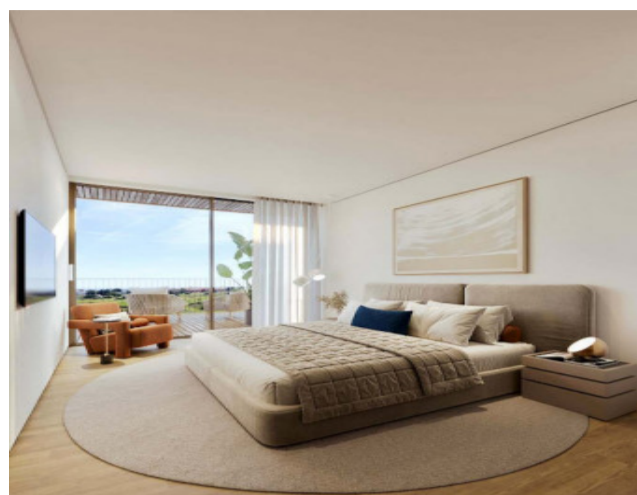
- Award-winning marina
- World-class golf courses
- Stunning golden beaches
- Fine dining, entertainment, and exclusive leisure options

This exclusive development is the perfect choice for those seeking a luxurious, secure, and serene lifestyle in one of the Algarve's most prestigious destinations.

-Invest in Luxury – Your Dream Home Awaits! Contact us today for more details and a private viewing.

logo

# Gallery



logo

Telephone: +351 213 471 603

Email: [info@portugalhomes.com](mailto:info@portugalhomes.com)

Praça da Alegria 1, 3rd Floor, 1250-004 Lisboa, Portugal Licence AMI - 14414 | APEMIP 5940

## Additional Details

### New Development Features

Telephone: +351 213 471 603

Email: [info@portugalhomes.com](mailto:info@portugalhomes.com)

Praça da Alegria 1, 3rd Floor, 1250-004 Lisboa, Portugal Licence AMI - 14414 | APEMIP 5940

logo

## Development Units

| Fraction       | Bedrooms | Floor Size | Price    |
|----------------|----------|------------|----------|
| ESSENCE Unit V | 2        |            | €975,000 |

logo

Telephone: +351 213 471 603

Email: [info@portugalhomes.com](mailto:info@portugalhomes.com)

Praça da Alegria 1, 3rd Floor, 1250-004 Lisboa, Portugal Licence AMI - 14414 | APEMIP 5940

## Site Floorplan

Telephone: +351 213 471 603

Email: [info@portugalhomes.com](mailto:info@portugalhomes.com)

Praça da Alegria 1, 3rd Floor, 1250-004 Lisboa, Portugal Licence AMI - 14414 | APEMIP 5940

logo