

€2,950,000

Ref: PP176016

429 sqm

This contemporary villa in Vilamoura, showcases sleek modern architecture with four spacious bedrooms and a private swimming pool, all overlooking the stunning golf course. The open-plan layout seamlessly...

• Pool

• A/C

• Garden

Telephone: +351 213 471 603
Email: info@portugalhomes.com

Praça da Alegria 1, 3rd Floor, 1250-004 Lisboa, Portugal Licence AMI - 14414 | APEMIP 5940

logo not

Property Description

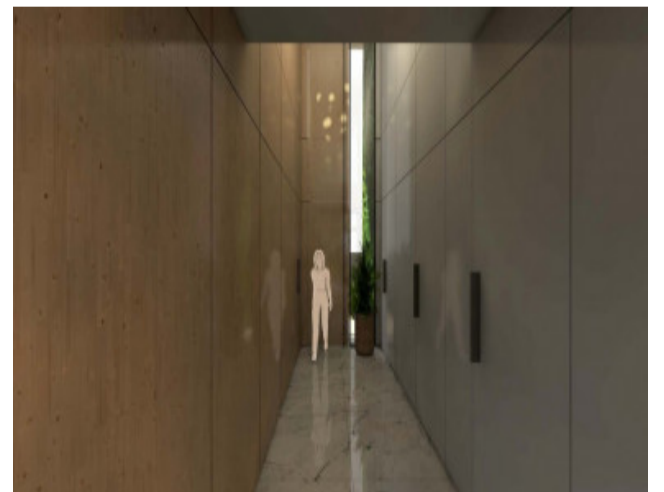
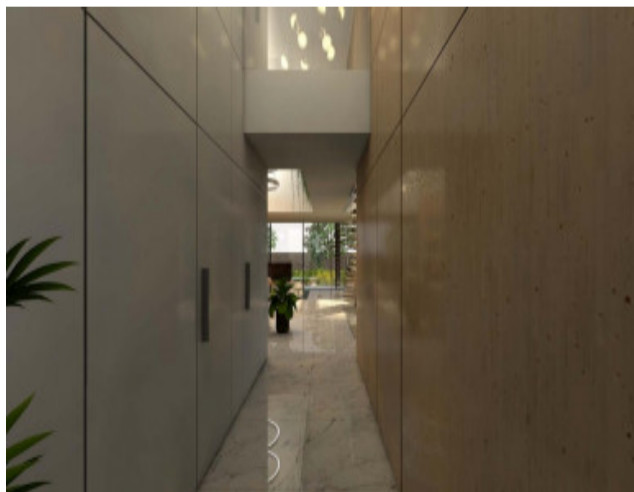
This contemporary villa in Vilamoura, showcases sleek modern architecture with four spacious bedrooms and a private swimming pool, all overlooking the stunning golf course.

The open-plan layout seamlessly connects the living and dining areas with the kitchen, extending onto a covered terrace, ideal for enjoying the Algarve's mild climate.

Two en-suite bedrooms are located on the ground floor, while the first floor offers two additional suites, each with its own private balcony, ensuring both comfort and privacy.

The basement features a large garage and a versatile multipurpose space that can be adapted to suit your lifestyle.

Set in a prestigious residential area, just 3 km from Vilamoura's vibrant Marina, this property also offers the opportunity to customise the finishes, depending on the stage of construction, making it truly your own.



logo

Telephone: +351 213 471 603

Email: info@portugalhomes.com

Praça da Alegria 1, 3rd Floor, 1250-004 Lisboa, Portugal Licence AMI - 14414 | APEMIP 5940

Additional Details

Attributes

Status Available	Net Area 429sq m	Gross Area 429sq m
Year Built 2026		

Property Features

Pool	A/C	Garden
------	-----	--------

logo

Telephone: +351 213 471 603

Email: info@portugalhomes.com

Praça da Alegria 1, 3rd Floor, 1250-004 Lisboa, Portugal Licence AMI - 14414 | APEMIP 5940

Site Floorplan

Telephone: +351 213 471 603

Email: info@portugalhomes.com

Praça da Alegria 1, 3rd Floor, 1250-004 Lisboa, Portugal Licence AMI - 14414 | APEMIP 5940

logo