

€299,000

Ref: PW423

90 sqm

Refurbished 2 bedroom apartment. Fully equipped kitchen with Bosch appliances. LED lighting and VMC air circulating system installed in the whole house. 10sqm terrace with barbecue Double-glass windows

- Outside

Telephone: +351 213 471 603

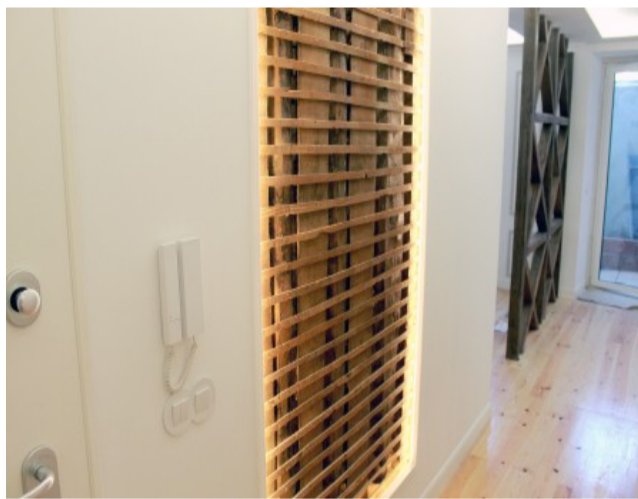
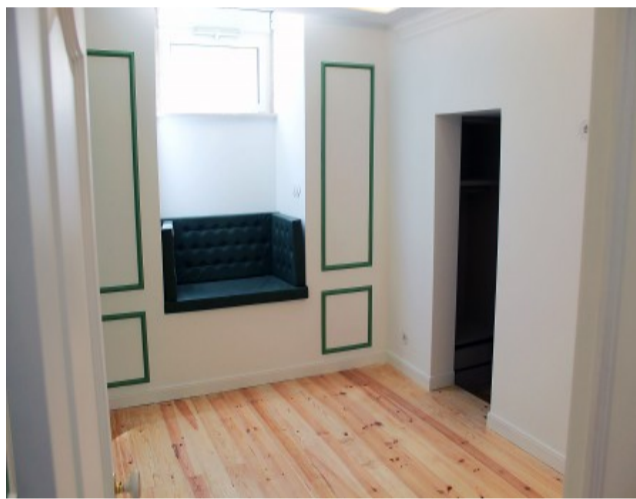
Email: info@portugalhomes.com

Praça da Alegria 1, 3rd Floor, 1250-004 Lisboa, Portugal Licence AMI - 14414 | APEMIP 5940

Property Description

Graça is in one of Lisbon's classic regions, with ancient architecture buildings and markets. Since it spans over one of the fabled seven hills of Lisbon, it offers great viewpoints over the city. When passing by the neighbourhood, you can count on finding a varied cultural offer with plenty of venues where you can visit art exhibits, listen to music, dance or learn to dance. No matter what your food preferences or regimes are, you will find an option for your taste in the neighbourhood: vegetarian restaurants, restaurants for meat lovers, ethnic, alternative meals, fusion food, traditional Portuguese meals - you name it you find it here.

This property is a lovely 2 bedroom apartment, refurbished in really good taste, it has a small bedroom with a walk-in closet and a master bedroom with a suite and a walk-in closet. Both bathrooms have marble sinks and the main bathroom has a marble shower base as well. There is LED lighting and VMC air circulating system throughout the whole house. Another great feature is the 10sqm terrace with pre-installed barbecue and the gorgeous fully equipped kitchen with Bosch appliances.



logo

Telephone: +351 213 471 603

Email: info@portugalhomes.com

Praça da Alegria 1, 3rd Floor, 1250-004 Lisboa, Portugal Licence AMI - 14414 | APEMIP 5940

Additional Details

Attributes

Status Sold	Net Area 90sq m	Gross Area 90sq m
Floors 1	Condition Refurbished	

Property Features

Outside

Site Floorplan

logo

Telephone: +351 213 471 603

Email: info@portugalhomes.com

Praça da Alegria 1, 3rd Floor, 1250-004 Lisboa, Portugal Licence AMI - 14414 | APEMIP 5940