



€350,000

Ref: PW409

49 sqm

Newly refurbished one bedroom plus one apartment in Lapa, Santos, one of the oldest typical neighbourhoods in Lisbon. This apartment is a 6-minute walk from Santos train station then can take you to Oeiras and Casc

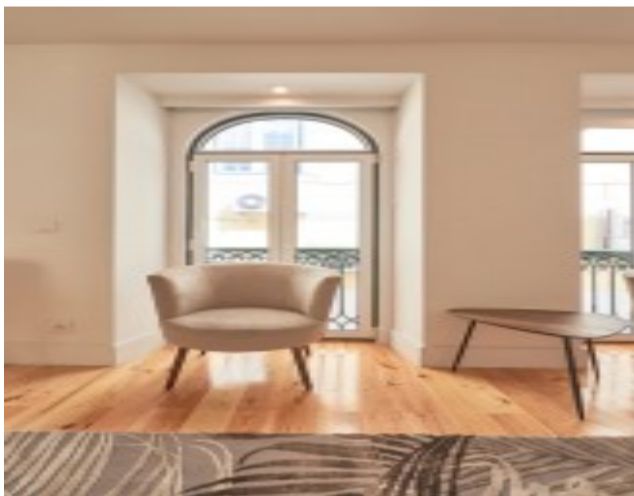
- Outside
- Central heating

Telephone: +351 213 471 603
Email: info@portugalhomes.com

Praça da Alegria 1, 3rd Floor, 1250-004 Lisboa, Portugal Licence AMI - 14414 | APEMIP 5940

Property Description

Newly refurbished two bedroom apartment in Lapa, Santos, one of the oldest typical neighbourhoods in Lisbon. This apartment is a 6-minute walk from Santos train station then can take you to Oeiras and Cascais in 20 minutes. Its a precious location in Santos design distric. Book a viewing with us and see if for yourself!



logo

Telephone: +351 213 471 603

Email: info@portugalhomes.com

Praça da Alegria 1, 3rd Floor, 1250-004 Lisboa, Portugal Licence AMI - 14414 | APEMIP 5940

Additional Details

Property Features

Outside

Central heating

logo

Telephone: +351 213 471 603

Email: info@portugalhomes.com

Praça da Alegria 1, 3rd Floor, 1250-004 Lisboa, Portugal Licence AMI - 14414 | APEMIP 5940

Site Floorplan

