

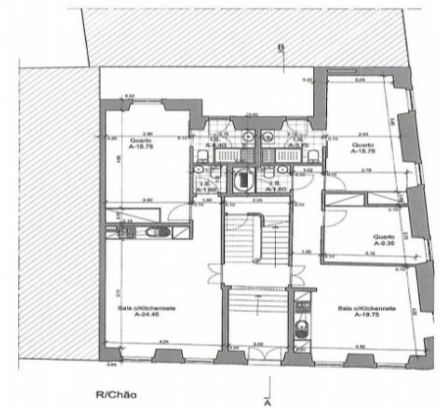
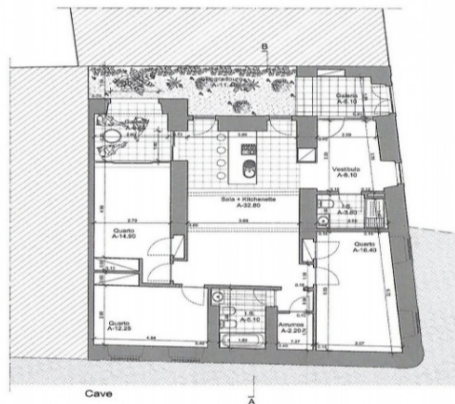


Materiais

- 1 - Reboco pintado cor azul claro
- 2 - Reboco pintado cor branca
- 3 - Pedra lisa bujadada a pico fixo
- 4 - Pedra lisa amaciada
- 5 - Arco de alumínio terminado cor cimento
- 6 - Caixa de alumínio terminado cor cimento
- 7 - Ferro pintado cor cinza
- 8 - Toldo cerâmica - Marsília
- 9 - Guarda em vidro laminado
- 10 - Porta em madeira pintada cor verde escuro



- Materiais**
- 1 - Reboco pintado cor azul claro
 - 2 - Reboco pintado cor branca
 - 3 - Pedra lisa bujadada a pico fixo
 - 4 - Pedra lisa amaciada
 - 5 - Arco de alumínio terminado cor cimento
 - 6 - Caixa de alumínio terminado cor cimento
 - 7 - Ferro pintado cor cinza
 - 8 - Toldo cerâmica - Marsília
 - 9 - Guarda em vidro laminado
 - 10 - Porta em madeira pintada cor verde escuro



€1,650,000

Ref: PW386

530 sqm

Building to refurbish 5 min walk to Avenida da Liberdade

- Heating

Telephone: +351 213 471 603

Email: info@portugalhomes.com

Praça da Alegria 1, 3rd Floor, 1250-004 Lisboa, Portugal Licence AMI - 14414 | APEMIP 5940

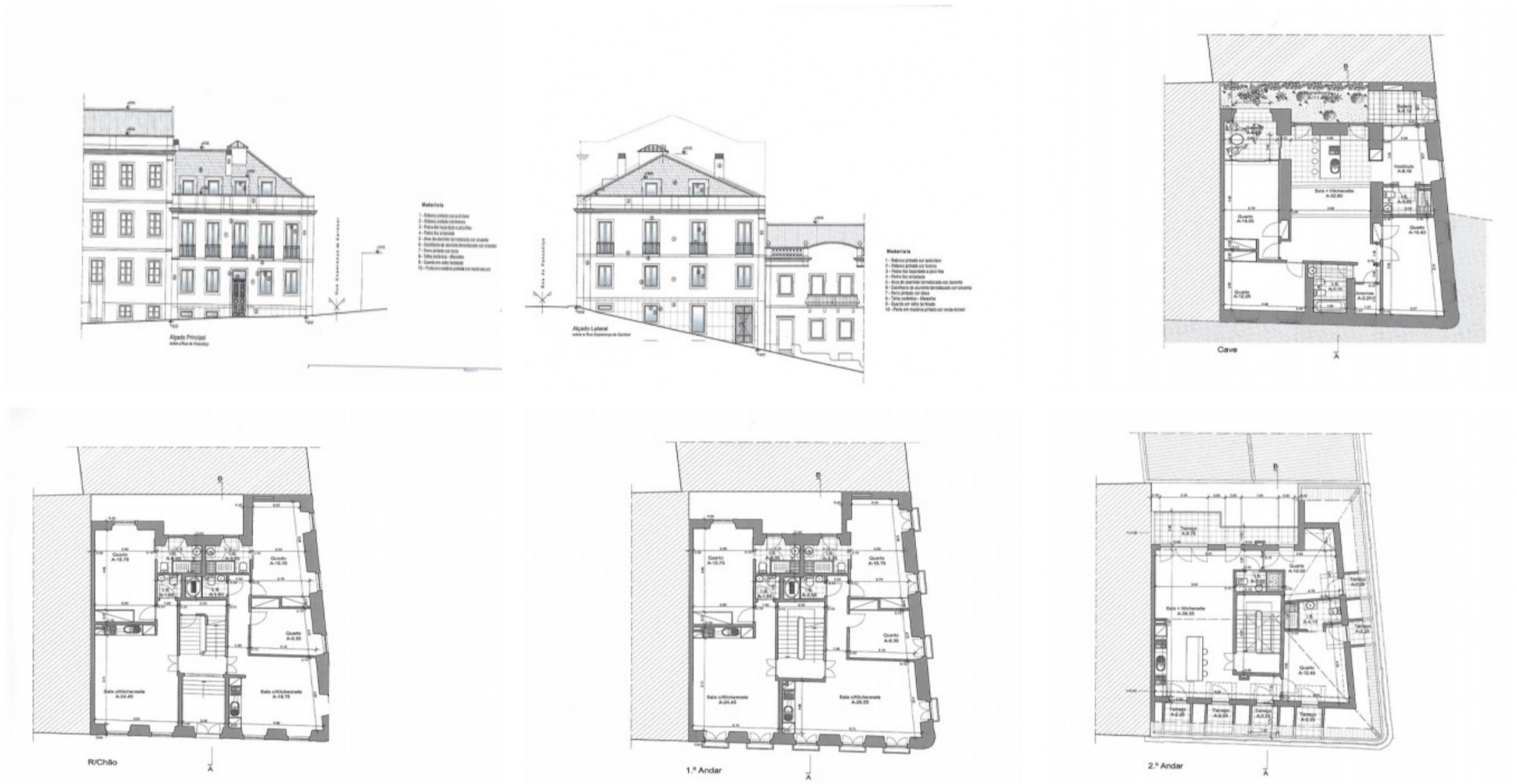
Property Description

Avenida da Liberdade, is Lisbon's main boulevard. Known for its luxury stores, including names like Louis Vuitton, Prada, Miu Miu, Gucci, Zadig&Voltaire, among others.

It's a tree-lined avenue with cobbled mosaics connecting Praça dos Restauradores to Praça Marquês de Pombal.

It's also a theater district and home of several elegant buildings. It's the site of the city's grander hotels and fine restaurants.

This building has an architecture project approved by the municipal for a total of 6 apartments. 2 one bedrooms with 65 sqm; 3 two bedrooms, from 75 sqm up to 90 sqm and 1 three bedroom apartment with 160 sqm.



logo

Telephone: +351 213 471 603

Email: info@portugalhomes.com

Praça da Alegria 1, 3rd Floor, 1250-004 Lisboa, Portugal Licence AMI - 14414 | APEMIP 5940

Additional Details

Property Features

Heating

logo

Telephone: +351 213 471 603

Email: info@portugalhomes.com

Praça da Alegria 1, 3rd Floor, 1250-004 Lisboa, Portugal Licence AMI - 14414 | APEMIP 5940

Site Floorplan

